

GARLAND SIX DEPARTURE
(GARL6.TT) 17AR25

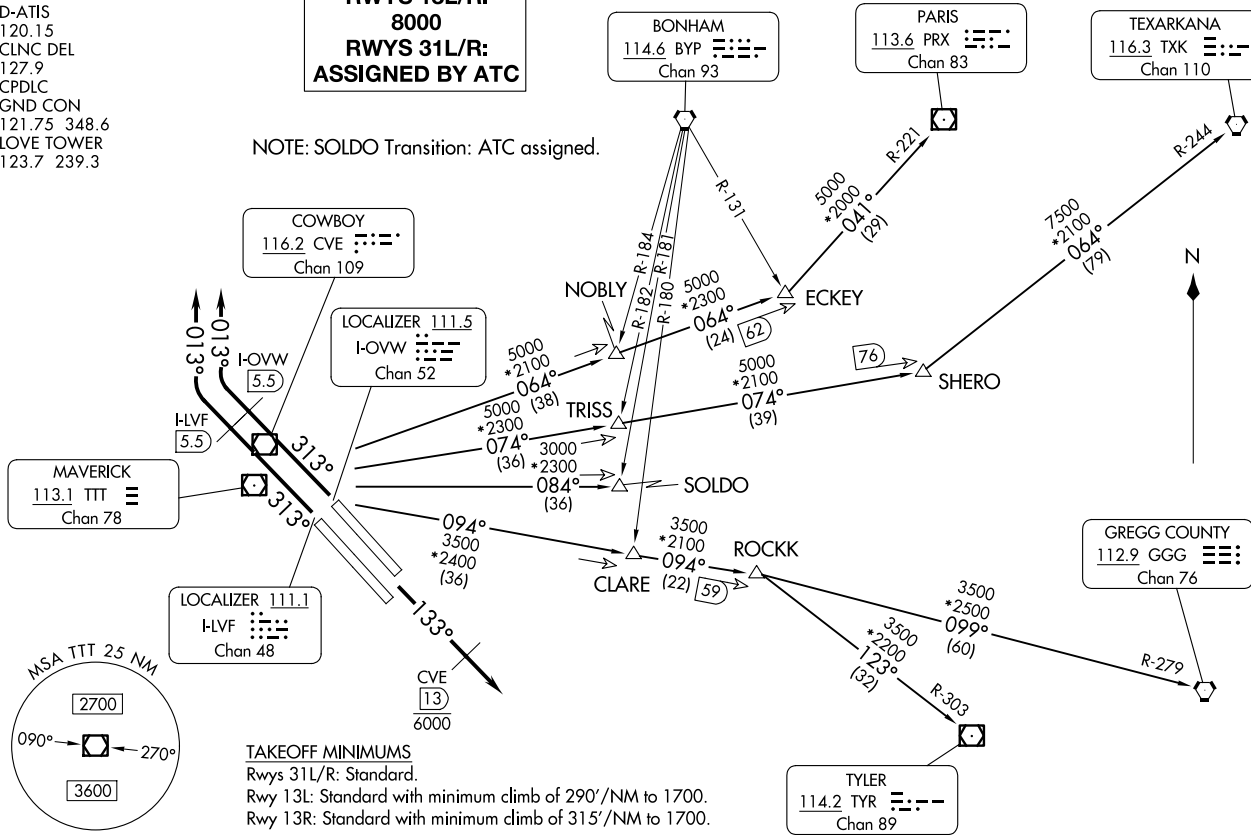
DALLAS, TEXAS
DALLAS LOVE FLD (DAL)

LONE STAR DEP CON
118.55 290.35
D-ATIS
120.15
CLNC DEL
127.9
CPDLC
GND CON
121.75 348.6
LOVE TOWER
123.7 239.3

**TOP ALTITUDE:
RWYS 13L/R:
8000
RWYS 31L/R:
ASSIGNED BY ATC**

RADAR and DME required.

NOTE: SOLDO Transition: ATC assigned.



TAKEOFF MINIMUMS
Rwys 31L/R: Standard.
Rwy 13L: Standard with minimum climb of 290'/NM to 1700.
Rwy 13R: Standard with minimum climb of 315'/NM to 1700.

NOTE: Chart not to scale.

(CONTINUED ON FOLLOWING PAGE)

(GARL6.TT) 25107
GARLAND SIX DEPARTURE

AI-106 (FAA)

DALLAS LOVE FLD (DAL)
DALLAS, TEXAS

GARLAND SIX DEPARTURE



DEPARTURE ROUTE DESCRIPTION

JETS:

TAKEOFF RUNWAYS 13L/R: Climb on heading 133°, cross CVE 13 DME at or below 6000, then maintain 8000 for RADAR vectors to appropriate route and expect filed altitude 10 minutes after departure.

TAKEOFF RUNWAYS 31L/R: Climb on heading 313° until the I-LVF 5.5 DME or I-OVW 5.5 DME, then right turn heading 013° for RADAR vectors to appropriate route, maintain ATC assigned altitude and expect filed altitude 10 minutes after departure.

GREGG COUNTY TRANSITION (GARL6.GGG): From over TTT VOR/DME on TTT R-094 to ROCKK, then on GGG R-279 to GGG VORTAC.

PARIS TRANSITION (GARL6.PRX): From over TTT VOR/DME on TTT R-064 to ECKEY, then on PRX R-221 to PRX VOR/DME.

SOLDO TRANSITION (GARL6.SOLDO): From over TTT VOR/DME on TTT R-084 to SOLDO.

TEXARKANA TRANSITION (GARL6.TXK): From over TTT VOR/DME on TTT R-074 to SHERO, then on TXK R-244 to TXK VORTAC.

TYLER TRANSITION (GARL6.TYR): From over TTT VOR/DME on TTT R-094 to ROCKK, then on TYR R-303 to TYR VOR/DME.

SC-2, 16 APR 2026 to 14 MAY 2026

SC-2, 16 APR 2026 to 14 MAY 2026