

LOC/DME I-DAL <b>111.5</b> Chan <b>52</b>	APP CRS <b>133°</b>	Rwy Ldg <b>7352</b> TDZE <b>485</b> Apt Elev <b>487</b>
---	------------------------	---

# ILS RWY 13L (SA CAT I & II)

DALLAS LOVE FLD (DAL)

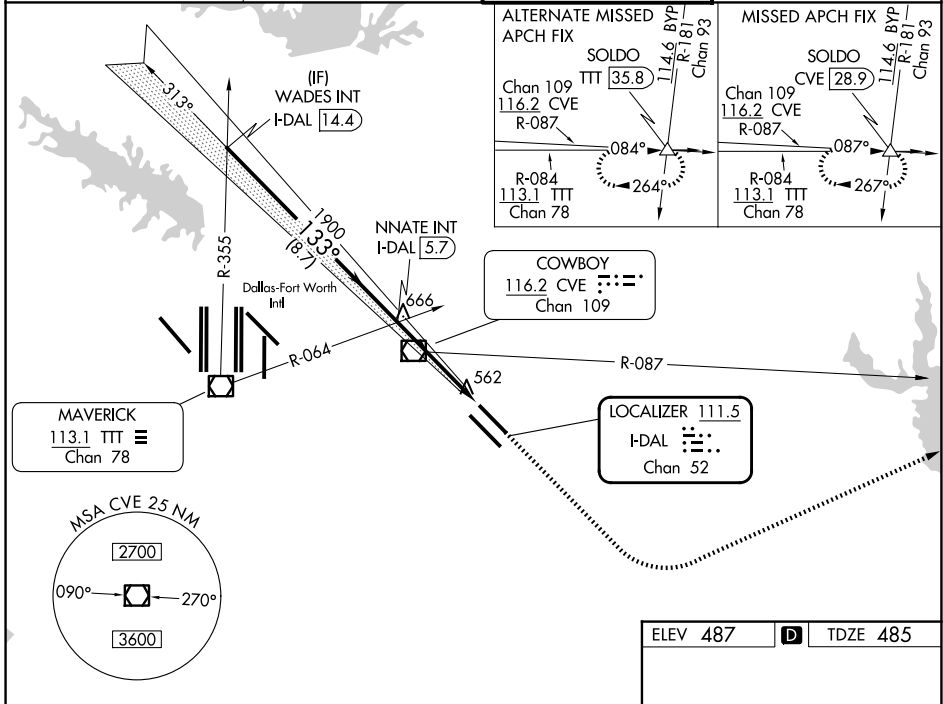
**RADAR required for procedure entry.**

Simultaneous approach authorized. SA CAT I: Requires specific OPSPEC, MSPEC, or LOA approval and use of HUD to DH. SA CAT II: Reduced lighting: Requires specific OPSPEC, MSPEC, or LOA approval and use of Autoland or HUD to touchdown.



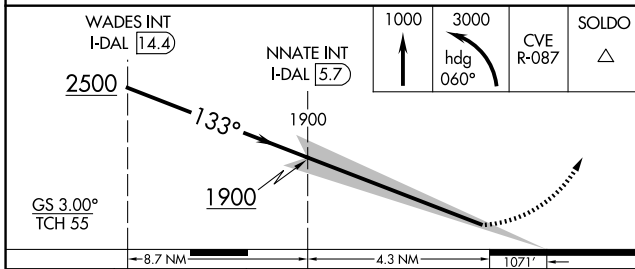
**MISSED APPROACH:** Climb to 1000 then climbing left turn to 3000 on heading 060° and CVE VOR/DME R-087 to SOLDO INT/CVE 28.9 DME and hold.

D-ATIS <b>120.15</b>	LONE STAR APP CON <b>124.3 282.275 (N)</b> <b>125.2 343.65 (S)</b>	LOVE TOWER <b>123.7 239.3</b>	GND CON <b>121.75 348.6</b>
-------------------------	--	----------------------------------	--------------------------------



SC-2, 16 APR 2026 to 14 MAY 2026

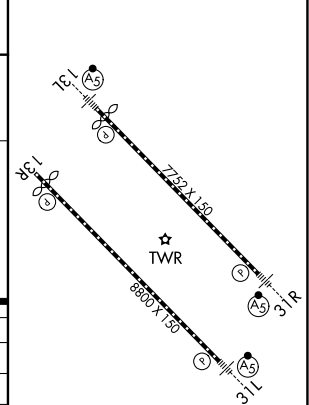
SC-2, 16 APR 2026 to 14 MAY 2026



CATEGORY	A	B	C	D
S-ILS 13L	SA CAT I	RA 168/14	150 DA 635	
S-ILS 13L	SA CAT II	RA 144/12	100 DA 585	

**SA CATEGORY I & II ILS SPECIAL AIRCREW & AIRCRAFT CERTIFICATION REQUIRED**

ELEV 487	<b>D</b>	TDZE 485
----------	----------	----------



TDZL/RCLS Rwy 13L and 31L  
HIRL Rwy 13L-31R, and 13R-31L