

LOC/DME I-OVW 111.5 Chan 52	APP CRS 313°	Rwy Ldg 6952 TDZE 487 Apt Elev 487
---	------------------------	---

ILS RWY 31R (SA CAT I & II)

DALLAS LOVE FLD (DAL)

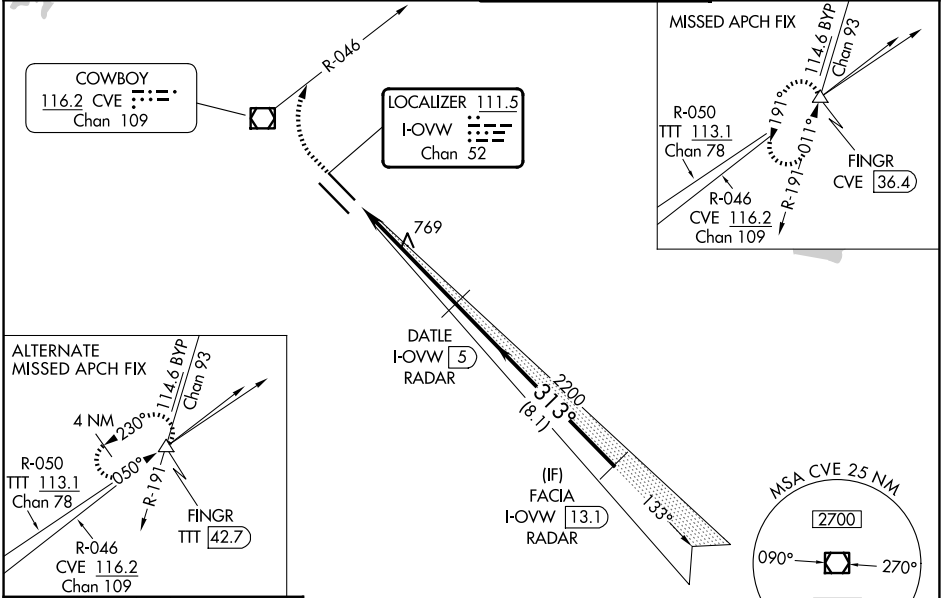
RADAR required for procedure entry.

Simultaneous approach authorized.
SA CAT I/II: Requires specific OPSPEC, MSPEC or LOA approval.

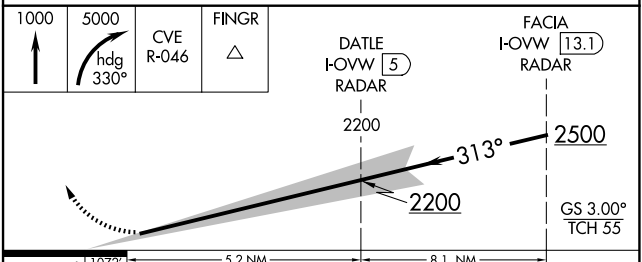
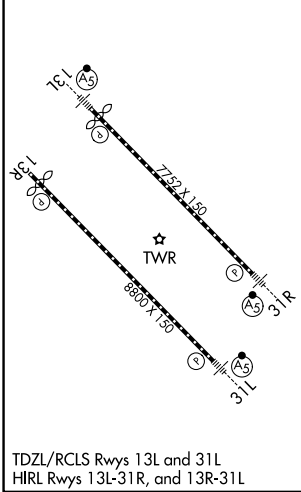
MALSR
(AS)

MISSED APPROACH: Climb to 1000 then climbing right turn to 5000 on heading 330° and CVE VOR/DME R-046 to FINGR INT/CVE 36.4 DME and hold.

D-ATIS 120.15	LONE STAR APP CON 124.3 282.275 (N) 125.2 343.65 (S)	LOVE TOWER 123.7 239.3	GND CON 121.75 348.6
-------------------------	--	----------------------------------	--------------------------------



ELEV 487	D	TDZE 487
-----------------	----------	-----------------



CATEGORY	A	B	C	D
S-ILS 31R	SA CAT I	RA 151/14	150 DA 637	
S-ILS 31R	SA CAT II	RA 98/12	100 DA 587	

SA CATEGORY I & II ILS - SPECIAL AIRCREW & AIRCRAFT CERTIFICATION REQUIRED

SC-2, 16 APR 2026 to 14 MAY 2026

SC-2, 16 APR 2026 to 14 MAY 2026