

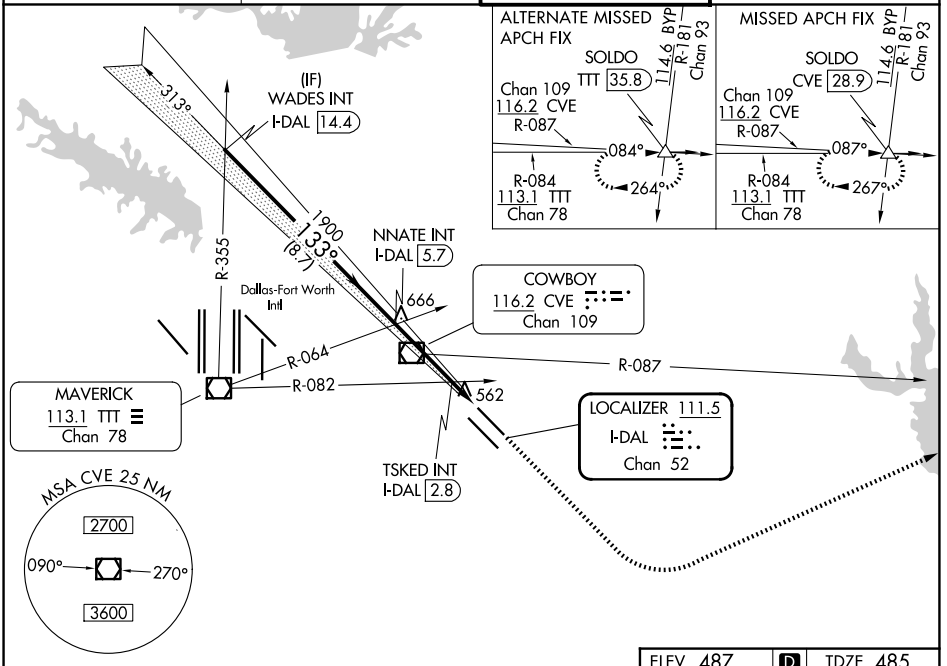
LOC/DME I-DAL 111.5 Chan 52	APP CRS 133°	Rwy Ldg 7352 TDZE 485 Apt Elev 487
---	------------------------	---

ILS or LOC RWY 13L

DALLAS LOVE FLD (DAL)

RADAR required for procedure entry.		MALSR	MISSED APPROACH: Climb to 1000 then climbing left turn to 3000 on heading 060° and CVE VOR/DME R-087 to SOLDO INT/CVE 28.9 DME and hold.
Simultaneous approach authorized.			

D-ATIS 120.15	LONE STAR APP CON 124.3 282.275 (N) 125.2 343.65 (S)	LOVE TOWER 123.7 239.3	GND CON 121.75 348.6
-------------------------	--	----------------------------------	--------------------------------



SC-2, 16 APR 2026 to 14 MAY 2026

SC-2, 16 APR 2026 to 14 MAY 2026

ELEV 487		D		TDZE 485	
WADES INT I-DAL 14.4		1000		3000	
NNATE INT I-DAL 5.7		hdg 060°		CVE R-087	
TSKED INT I-DAL 2.8		SOLDO		△	
I-DAL 2.3		I-DAL 1.4			
GS 3.00° TCH 55		8.7 NM		2.9 NM	
		0.5		0.9	
CATEGORY	A	B	C	D	
S-ILS 13L	685/18		200 (200-½)		
S-LOC 13L	920/24	435 (500-½)	920/40	435 (500-¾)	
CIRCLING	1000-1 513 (600-1)	1140-1 653 (700-1)	1220-2 733 (800-2)	1520-3 1033 (1100-3)	
TSKED FIX MINIMUMS (DUAL VOR RECEIVERS OR DME REQUIRED)					
S-LOC 13L	820/24	335 (400-½)	820/26	335 (400-½)	
CIRCLING	1000-1 513 (600-1)	1140-1 653 (700-1)	1220-2 733 (800-2)	1520-3 1033 (1100-3)	
		TDZL/RCLS Rwy 13L and 31L		HRL Rwy 13L-31R, and 13R-31L	
		FAF to MAP 4.3 NM			
Knots		60	90	120	150 180
Min:Sec		4:18	2:52	2:09	1:43 1:26