

LOC/DME I-DPX <b>111.1</b> Chan <b>48</b>	APP CRS <b>133°</b>	Rwy Ldg TDZE Apt Elev	<b>8310</b> <b>479</b> <b>487</b>
---	------------------------	-----------------------------	---

# ILS or LOC RWY 13R

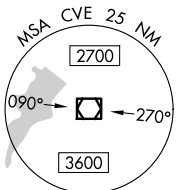
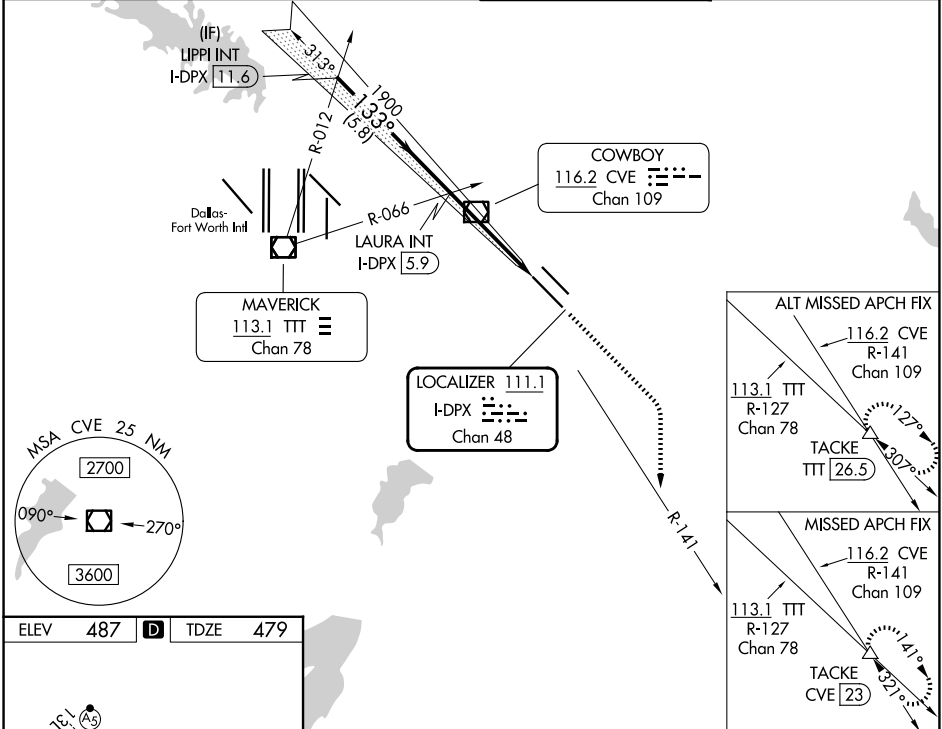
DALLAS LOVE FLD (DAL)

DME required.  
RADAR required for procedure entry.

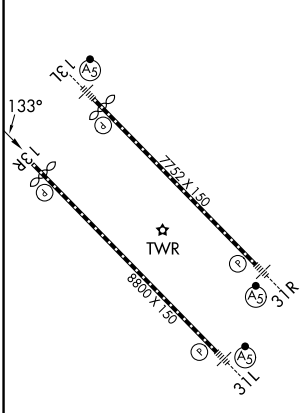
**Simultaneous approach authorized.**

MISSED APPROACH: Climb to 1000 then climbing right turn to 3000 on heading 150° and CVE VOR/DME R-141 to TACKE/CVE 23 DME and hold.

D-ATIS <b>120.15</b>	LONE STAR APP CON <b>124.3 282.275 (N)</b> <b>125.2 343.65 (S)</b>	LOVE TOWER <b>123.7 239.3</b>	GND CON <b>121.75 348.6</b>
-------------------------	--	----------------------------------	--------------------------------



ELEV 487	<b>D</b>	TDZE 479
----------	----------	----------



LIPPI INT I-DPX 11.6	VGSI and ILS glidepath not coincident (VGSI Angle 3.00/TCH 52).	1000	3000	CVE	TACKE
2500	133°	1900	1900	R-141	△
GS 3.00° TCH 47		I-DPX 2.9	I-DPX 1.6		
	5.8 NM	2.9 NM	1.4 NM		

CATEGORY	A	B	C	D
S-ILS 13R	679/40 200 (200-3/4)			
S-LOC 13R	960/55	481 (500-1)	960-13/8	481 (500-13/8)
CIRCLING	1080-1 593 (600-1)	1140-1 653 (700-1)	1220-2 733 (800-2)	1520-3 1033 (1100-3)

SC-2, 16 APR 2026 to 14 MAY 2026

SC-2, 16 APR 2026 to 14 MAY 2026