

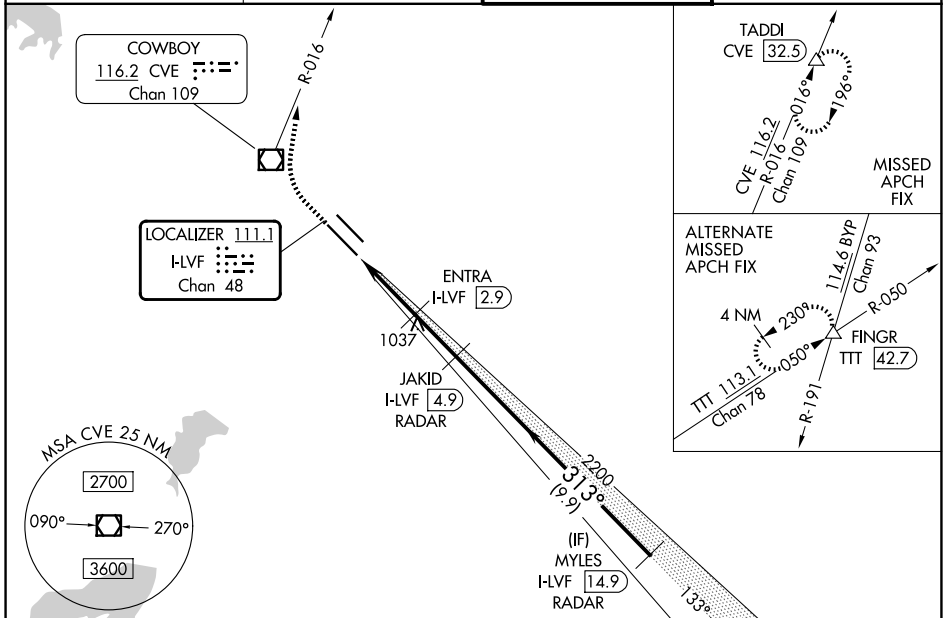
LOC/DME I-LVF <b>111.1</b> Chan <b>48</b>	APP CRS <b>313°</b>	Rwy Ldg <b>8000</b> TDZE <b>477</b> Apt Elev <b>487</b>
---	------------------------	---

# ILS or LOC RWY 31L

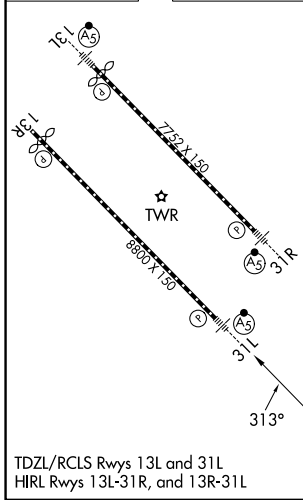
DALLAS LOVE FLD (DAL)

DME required. RADAR required for procedure entry.	MALSR 	MISSED APPROACH: Climb to 4000 direct CVE VOR/DME and on CVE R-016 to TADDI/CVE 32.5 DME and hold.
 Simultaneous approach authorized.		

D-ATIS <b>120.15</b>	LONE STAR APP CON <b>124.3 282.275 (N)</b> <b>125.2 343.65 (S)</b>	LOVE TOWER <b>123.7 239.3</b>	GND CON <b>121.75 348.6</b>
-------------------------	--	----------------------------------	--------------------------------



ELEV <b>487</b>	<b>D</b>	TDZE <b>477</b>
-----------------	----------	-----------------



4000	CVE 	CVE R-016	TADDI 	JAKID I-LVF <b>4.9</b> RADAR 2200	MYSLES I-LVF <b>14.9</b> RADAR 2500
	I-LVF DME ANTENNA I-LVF <b>0.2</b>	ENTRA I-LVF <b>2.9</b>			
		1520	2200		
					GS 3.08° TCH 55

CATEGORY	A	B	C	D
S-ILS 31L	677/18 200 (200-½)			
S-LOC 31L	1340/24 863 (900-½)	1340/40 863 (900-¾)	1340-2	863 (900-2)
CIRCLING	1340-1¼	853 (900-1¼)	1340-2½ 853 (900-2½)	1520-3 1033 (1100-3)

SC-2, 16 APR 2026 to 14 MAY 2026

SC-2, 16 APR 2026 to 14 MAY 2026