

APP CRS 133°	Rwy Ldg 8310
	TDZE 478
	Apt Elev 487

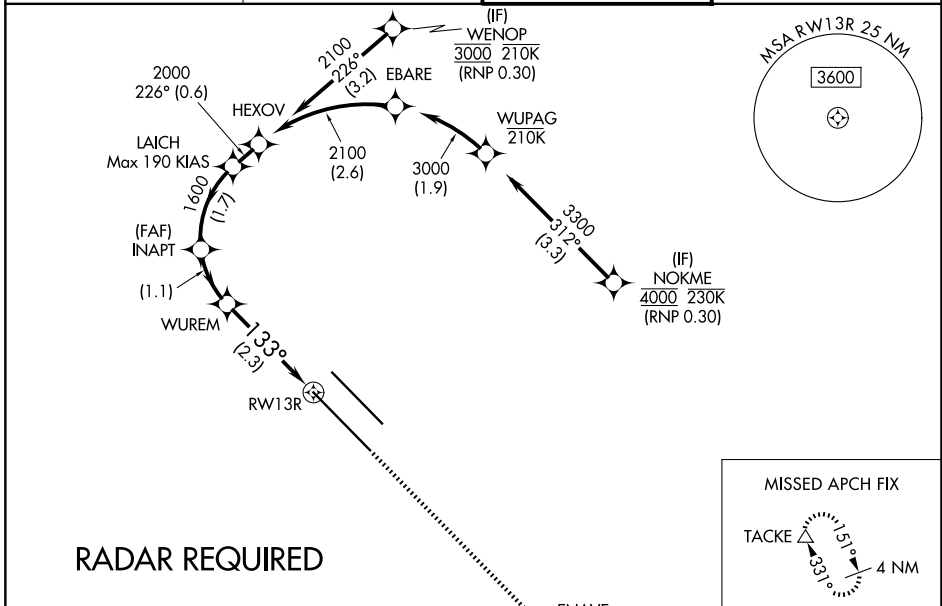
RNAV (RNP) W RWY 13R

DALLAS LOVE FLD (DAL)

▽ For uncompensated Baro-VNAV systems, procedure NA below -5°C (23°F) or above 54°C (130°F). Simultaneous approach authorized. RF required. GPS required. Use of FD or AP providing RNAV track guidance required during simultaneous operations.

MISSED APPROACH: Climb to 3000 direct ENAVE and on track 151° to TACKE and hold.

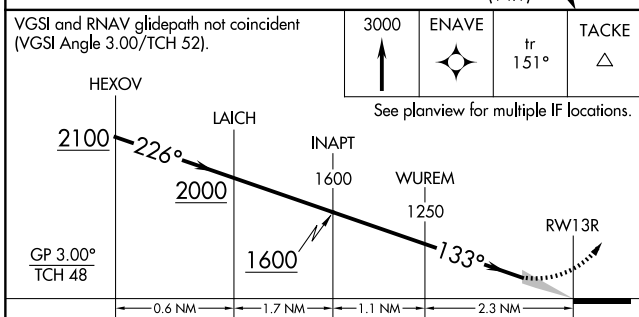
D-ATIS 120.15	LONE STAR APP CON 124.3 282.275 (N) 125.2 343.65 (S)	LOVE TOWER 123.7 239.3	GND CON 121.75 348.6
-------------------------	--	----------------------------------	--------------------------------



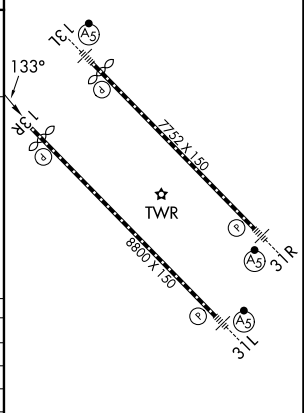
SC-2, 16 APR 2026 to 14 MAY 2026

SC-2, 16 APR 2026 to 14 MAY 2026

VGSI and RNAV glidepath not coincident (VGSI Angle 3.00/TCH 52).



ELEV 487	D TDZE 478
----------	-------------------



CATEGORY	A	B	C	D
RNP 0.20 DA		781/50	303 (300-1)	
RNP 0.25 DA		833/60	355 (400-1½)	
RNP 0.30 DA		929-1½	451 (500-1½)	

AUTHORIZATION REQUIRED

TDZL/RCLS Rwy 13L and 31L
HIRL Rwy 13L-31R, and 13R-31L