

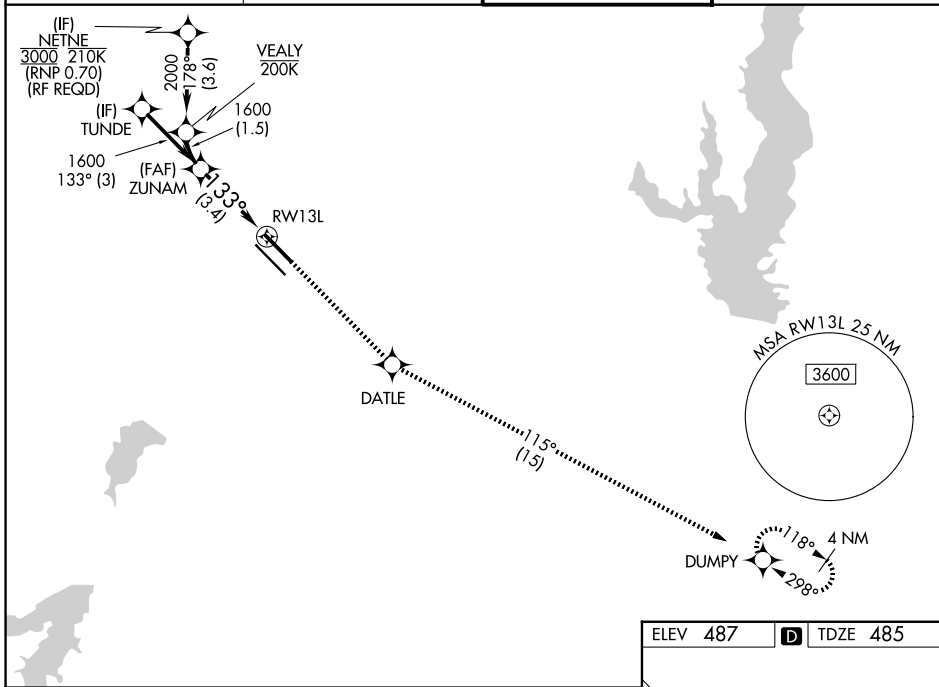
| | | |
|-------------|----------|-------------|
| APP CRS | Rwy Ldg | 7352 |
| | TDZE | 485 |
| 133° | Apt Elev | 487 |

RNAV (RNP) X RWY 13L

DALLAS LOVE FLD (DAL)

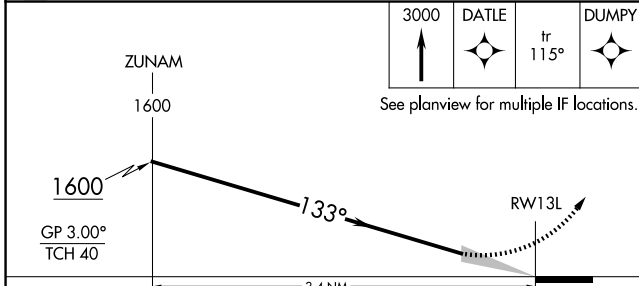
| | | |
|---|-------|--|
| RNP AR APCH. | MALSR | MISSED APPROACH: Climb to 3000 direct DATLE and on track 115° to DUMPY and hold. |
| <p>Simultaneous approach authorized. For uncompensated Baro-VNAV systems, procedure NA below -6°C or above 54°C. For inop ALS, increase RNP 0.11 all Cats visibility to RVR 4500.</p> | | |

| | | | |
|---------------|---|--------------------|---------------------|
| D-ATIS | LONE STAR APP CON | LOVE TOWER | GND CON |
| 120.15 | 124.3 282.275 (N) 125.2 343.65 (S) | 123.7 239.3 | 121.75 348.6 |



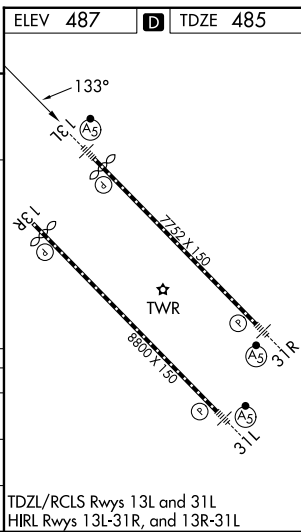
SC-2, 16 APR 2026 to 14 MAY 2026

SC-2, 16 APR 2026 to 14 MAY 2026



| | | | | |
|-------------|---|--------|-------------|---|
| CATEGORY | A | B | C | D |
| RNP 0.11 DA | | 754/24 | 269 (300-½) | |
| RNP 0.30 DA | | 846/40 | 361 (400-¾) | |

AUTHORIZATION REQUIRED



TDZL/RCLS Rwy 13L and 31L
HIRL Rwy 13L-31R, and 13R-31L