

APP CRS <b>133°</b>	Rwy Ldg <b>8310</b>
	TDZE <b>478</b>
	Apt Elev <b>487</b>

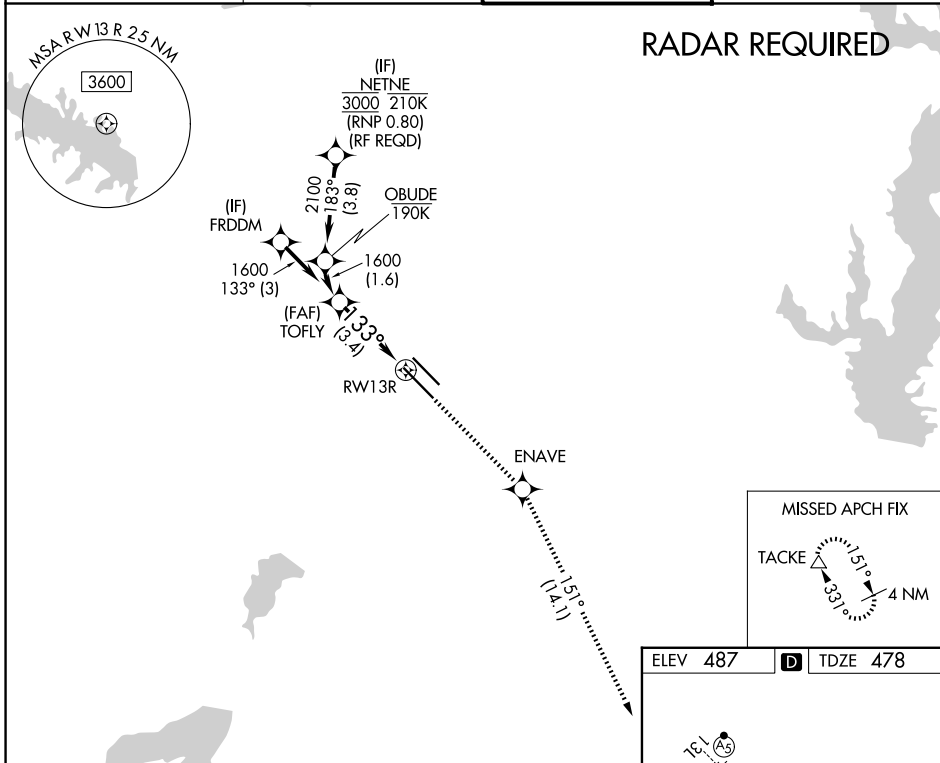
# RNAV (RNP) X RWY 13R

DALLAS LOVE FLD (DAL)

▼ For uncompensated Baro-VNAV systems, procedure NA below -5°C (23°F) or above 54°C (130°F). Simultaneous approach authorized. GPS required. Use of FD or AP providing RNAV track guidance required during simultaneous operations.

MISSED APPROACH: Climb to 3000 direct ENAVE and on track 151° to TACKE and hold.

D-ATIS <b>120.15</b>	LONE STAR APP CON <b>124.3 282.275 (N)</b> <b>125.2 343.65 (S)</b>	LOVE TOWER <b>123.7 239.3</b>	GND CON <b>121.75 348.6</b>
-------------------------	--	----------------------------------	--------------------------------



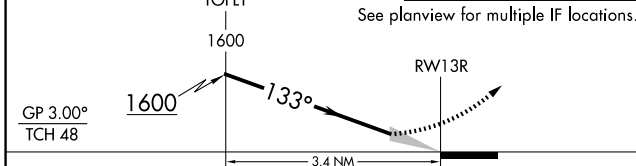
SC-2, 16 APR 2026 to 14 MAY 2026

SC-2, 16 APR 2026 to 14 MAY 2026

VGSI and RNAV glidepath not coincident (VGSI Angle 3.00/TCH 52).

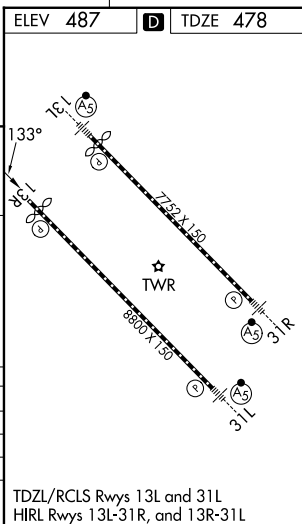
3000	ENAVE	TACKE
↑	✧	tr 151°

See planview for multiple IF locations.



CATEGORY	A	B	C	D
RNP 0.20 DA		781/50	303 (300-1)	
RNP 0.25 DA		833/60	355 (400-1½)	
RNP 0.30 DA		929-1½	451 (500-1½)	

## AUTHORIZATION REQUIRED



TDZL/RCLS Rwy 13L and 31L  
HIRL Rwy 13L-31R, and 13R-31L