

RNAV (RNP) Z RWY 31L

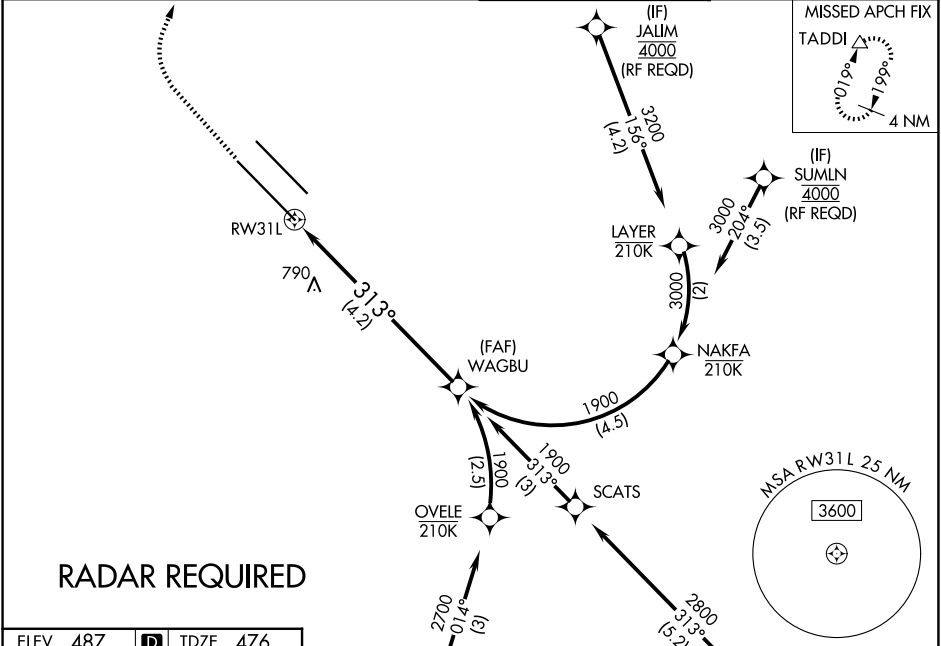
DALLAS LOVE FLD (DAL)

APP CRS 313°	Rwy Ldg 8000
	TDZE 476
	Apt Elev 487

▼ For uncompensated Baro-VNAV systems, procedure NA below -5°C (23°F) or above 48°C (119°F). Simultaneous approach authorized. GPS required. Use of FD or AP providing RNAV track guidance required during simultaneous operations. For inop MALSRL, increase RNP 0.30 visibility all Cats to 2½ miles.

MALSRL MISSED APPROACH: Climb to 1700 then climbing right turn to 4000 direct TADDI and hold.

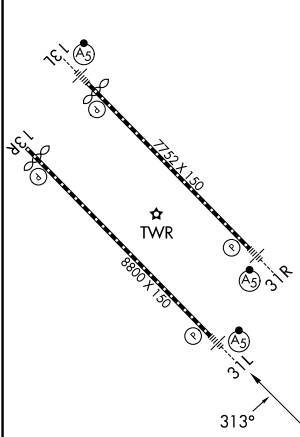
D-ATIS 120.15	LONE STAR APP CON 124.3 282.275 (N) 125.2 343.65 (S)	LOVE TOWER 123.7 239.3	GND CON 121.75 348.6
-------------------------	--	----------------------------------	--------------------------------



SC-2, 16 APR 2026 to 14 MAY 2026

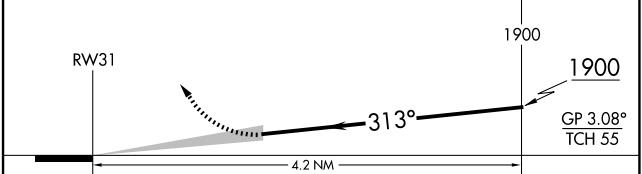
SC-2, 16 APR 2026 to 14 MAY 2026

ELEV 487	D	TDZE 476
----------	----------	----------



TDZL/RCLS Rwy 13L and 31L
HIRL Rwy 13L-31R, and 13R-31L

1700 4000 TADDI See planview for multiple IF locations.



CATEGORY	A	B	C	D
RNP 0.30 DA		1117-1½	641 (700-1½)	

AUTHORIZATION REQUIRED