


RNAV (RNP) Z RWY 31R

DALLAS LOVE FLD (DAL)

APP CRS 313°	Rwy Ldg 6952
	TDZE 487
	Apt Elev 487

RNP AR APCH.

▼ For uncompensated Baro-VNAV systems, procedure NA below -5°C (23°F) or above 54°C (130°F). Use of FD or AP providing RNAV track guidance required during simultaneous operations. Simultaneous approach authorized.

MALSR 

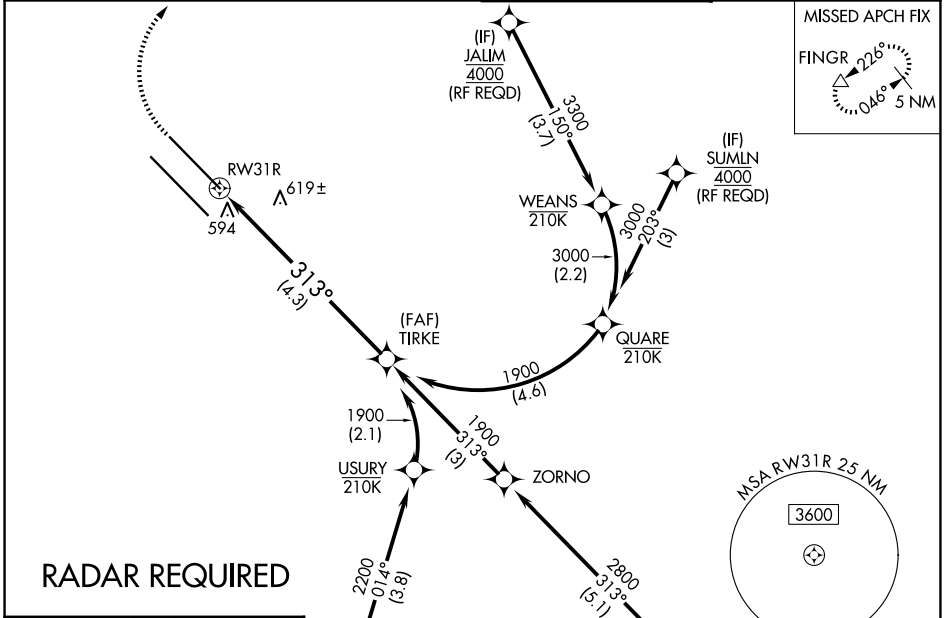
MISSED APPROACH: Climb to 900 then climbing right turn to 5000 direct FINGR and hold.

D-ATIS
120.15

LONE STAR APP CON
124.3 282.275 (N)
125.2 343.65 (S)

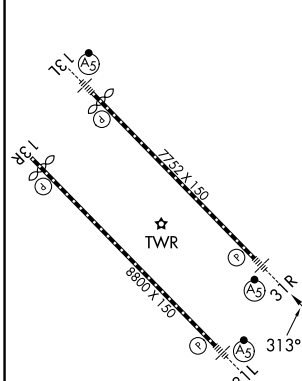
LOVE TOWER
123.7 239.3


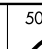
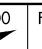
GND CON
121.75 348.6

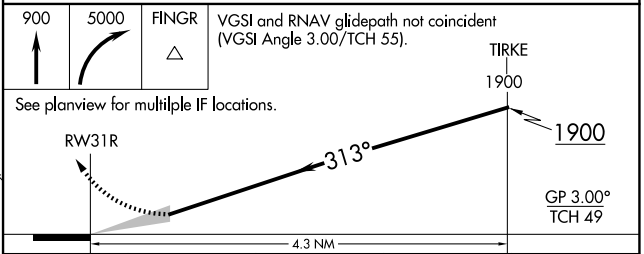


RADAR REQUIRED

ELEV 487 **D** TDZE 487



900	5000	FINGR	VGSi and RNAV glidepath not coincident (VGSi Angle 3.00/TCH 55).
			



CATEGORY	A	B	C	D
RNP 0.16 DA		796/24	309 (400-½)	
RNP 0.30 DA		895/45	408 (500-¾)	

TDZL/RCLS Rwy 13L and 31L
HIRL Rwy 13L-31R, and 13R-31L

DALLAS, TEXAS
Orig-C 31JAN19

32°51'N-96°51'W

DALLAS LOVE FLD (DAL)
RNAV (RNP) Z RWY 31R

SC-2, 16 APR 2026 to 14 MAY 2026

SC-2, 16 APR 2026 to 14 MAY 2026

AUTHORIZATION REQUIRED