

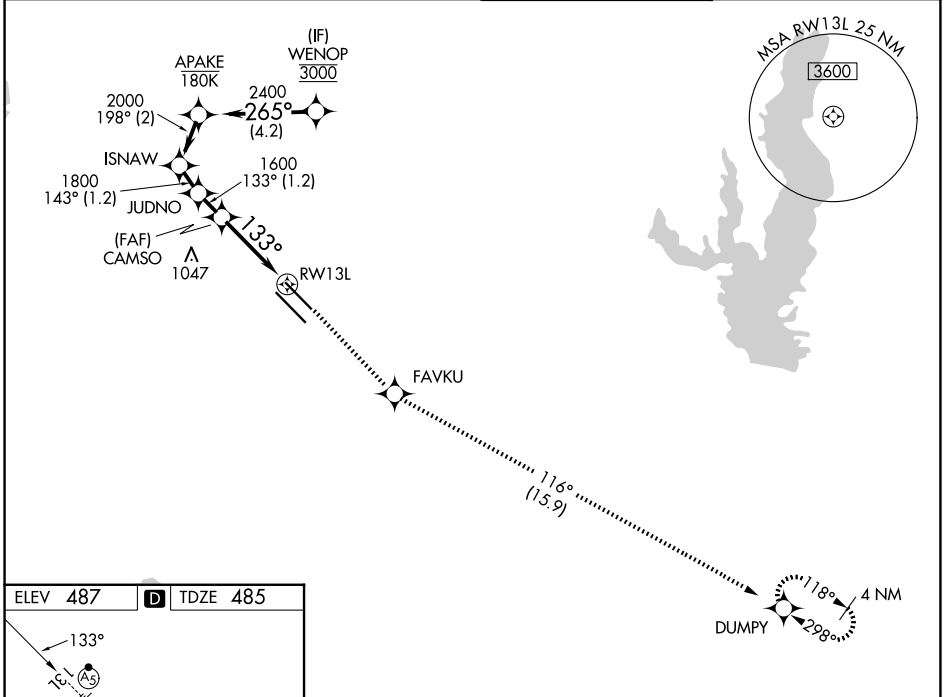
WAAS CH 50547 W13A	APP CRS 133°	Rwy Ldg 7352 TDZE 485 Apt Elev 487
--	------------------------	---

RNAV (GPS) Y RWY 13L

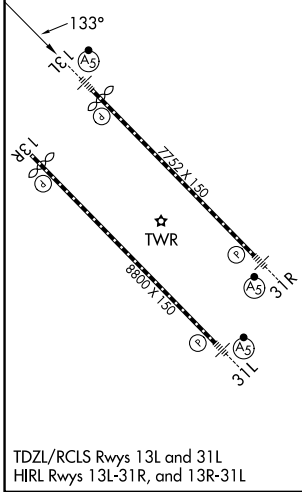
DALLAS LOVE FLD (DAL)

RNP APCH - GPS.		MALSR 	MISSED APPROACH: Climb to 3000 direct FAVKU and on track 116° to DUMPY and hold.
RADAR required for procedure entry.			
⚠ For uncompensated Baro-VNAV systems, LNAV/VNAV NA below -8°C or above 54°C. For inop ALS, increase LNAV/VNAV all Cats visibility to RVR 4500 and LNAV Cats C and D visibility to 1 3/4 SM.			

D-ATIS 120.15	LONE STAR APP CON 124.3 282.275 (N) 125.2 343.65 (S)	LOVE TOWER 123.7 239.3	GND CON 121.75 348.6
-------------------------	--	----------------------------------	--------------------------------



ELEV 487	D	TDZE 485
-----------------	----------	-----------------



	WENOP	APAKE	ISNAW	JUDNO	CAMSO	tr 116°	DUMPY
	3000	2400	2000	1800	1600		
	GP 3.00°						
	TCH 55						
	4.2 NM	2 NM	1.2 NM	1.2 NM	1.6 NM		1.8 NM
CATEGORY	A	B	C	D			
LPV DA		685/18	200 (200-1/2)				
LNAV/VNAV DA		760/24	275 (300-1/2)				
LNAV MDA	1100/24	615 (700-1/2)	1100-1 3/8	615 (700-1 3/8)			
CIRCLING	1100-1 613 (700-1)	1140-1 653 (700-1)	1280-2 1/4 793 (800-2 1/4)	1520-3 1033 (1100-3)			

DALLAS, TEXAS
Amdt 2 19MAR26

32°51'N-96°51'W

RNAV (GPS) Y RWY 13L

SC-2, 16 APR 2026 to 14 MAY 2026

SC-2, 16 APR 2026 to 14 MAY 2026