

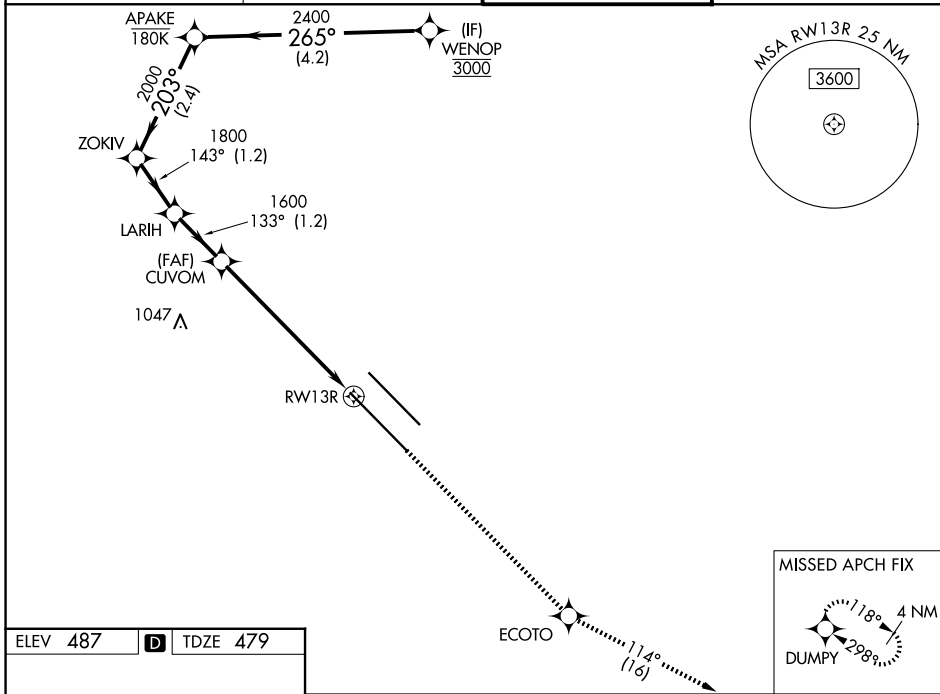
WAAS CH 97747 W13B	APP CRS 133°	Rwy Ldg TDZE Apt Elev	8310 479 487
--	------------------------	-----------------------------	---

RNAV (GPS) Y RWY 13R

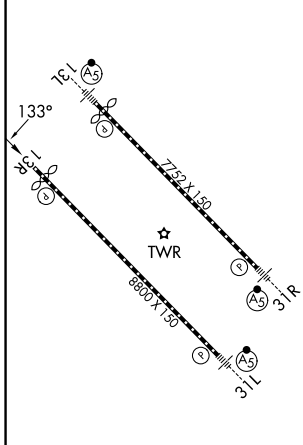
DALLAS LOVE FLD (DAL)

RNP APCH - GPS. RADAR required for procedure entry.	MISSED APPROACH: Climb to 3000 direct ECOTO and on track 114° to DUMPY and hold.
▼ For uncompensated Baro-VNAV systems, LNAV/VNAV NA below -8°C or above 54°C.	

D-ATIS 120.15	LONE STAR APP CON 124.3 282.275 (N) 125.2 343.65 (S)	LOVE TOWER 123.7 239.3	GND CON 121.75 348.6
-------------------------	--	----------------------------------	--------------------------------



ELEV 487	D	TDZE 479
----------	----------	----------



TDZL/RCLS Rwy 13L and 31L
HIRL Rwy 13L-31R, and 13R-31L

VGSI and RNAV glidepath not coincident (VGSI Angle 3.00/TCH 52).

WENOP	APAKE	ZOKIV	LARIH	CUVOM	ECOTO	DUMPY
3000	2400	2000	1800	1600	3000	tr 114°
GP 3.00° TCH 47				2.3 NM to RWY 13R		
	4.2 NM	2.4 NM	1.2 NM	1.2 NM	1 NM	2.3 NM
CATEGORY	A	B	C	D		
LPV DA		679/40	200 (200-¾)			
LNAV/VNAV DA		831/55	352 (400-1)			
LNAV MDA	1280/55 801 (800-1)	1280-1¼ 801 (800-1¼)	1280-2½	801 (800-2½)		
CIRCLING	1280-1 793 (800-1)	1280-1¼ 793 (800-1¼)	1280-2½ 793 (800-2½)	1520-3 1033 (1100-3)		

SC-2, 16 APR 2026 to 14 MAY 2026

SC-2, 16 APR 2026 to 14 MAY 2026