

# VENUS FOUR DEPARTURE

LONE STAR DEP CON  
125.125 353.95  
D-ATIS  
120.15  
CLNC DEL  
127.9  
CPDLC  
GND CON  
121.75 348.6  
LOVE TOWER  
123.7 239.3

RADAR required. DME required.

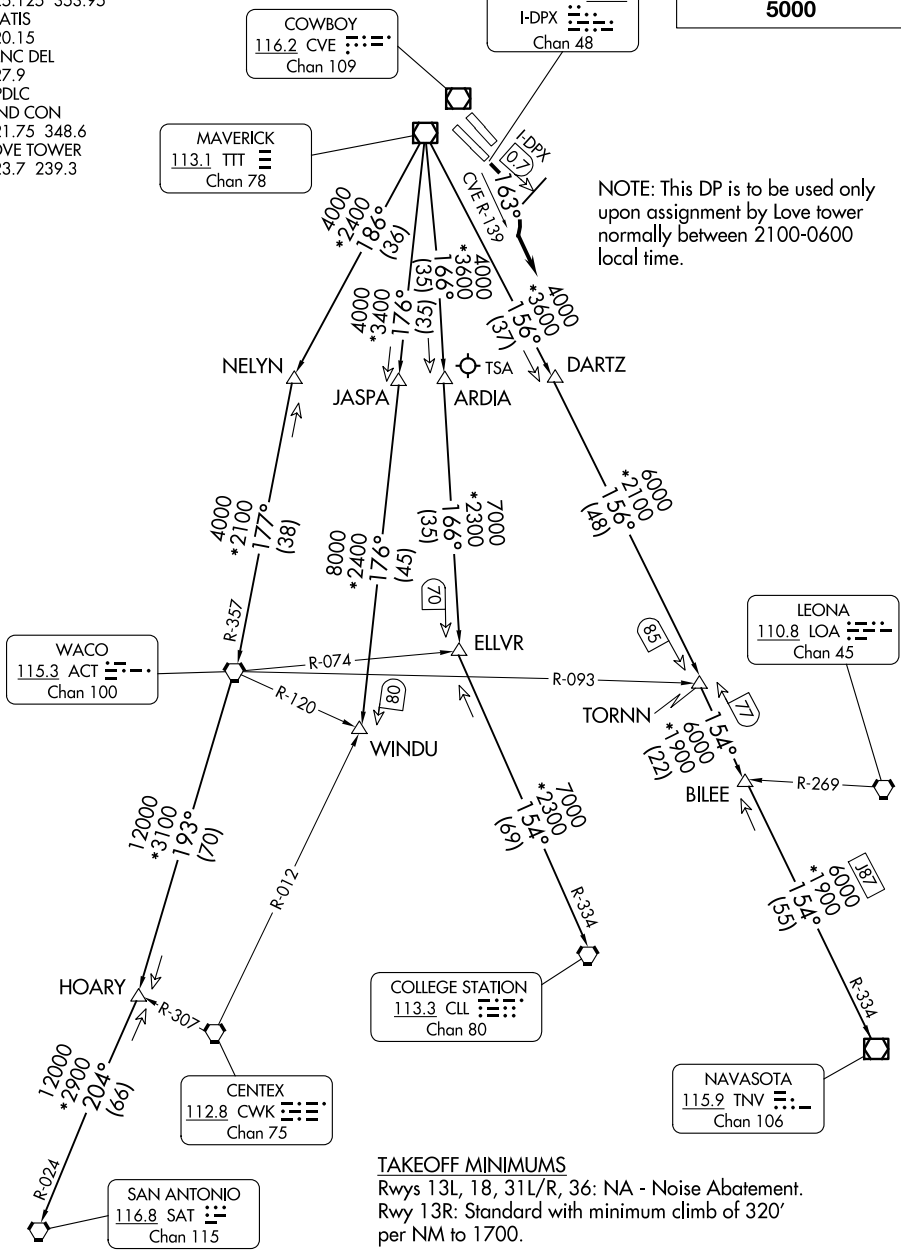
LOCALIZER 111.1  
I-DPX  
Chan 48

**TOP ALTITUDE:  
5000**

COWBOY  
116.2 CVE  
Chan 109

MAVERICK  
113.1 TTT  
Chan 78

NOTE: This DP is to be used only upon assignment by Love tower normally between 2100-0600 local time.



**TAKEOFF MINIMUMS**  
Rwys 13L, 18, 31L/R, 36: NA - Noise Abatement.  
Rwy 13R: Standard with minimum climb of 320' per NM to 1700.

(CONTINUED ON FOLLOWING PAGE)

NOTE: Chart not to scale.

SC-2, 16 APR 2026 to 14 MAY 2026

SC-2, 16 APR 2026 to 14 MAY 2026

# VENUS FOUR DEPARTURE

# VENUS FOUR DEPARTURE



## DEPARTURE ROUTE DESCRIPTION

TAKEOFF RUNWAY 13R: Turn right heading 163° not later than 0.7 DME outbound on the I-DPX localizer southeast course, to intercept and climb on the CVE R-139 for RADAR vectors to appropriate route. Unless otherwise advised maintain 5000 and expect filed altitude 10 minutes after departure.

COLLEGE STATION TRANSITION (VENUS4.CLL): From over TTT VOR/DME on TTT R-166 to ELLVR, then on CLL R-334 to CLL VORTAC.

ELLVR TRANSITION (VENUS4.ELLVR): From over TTT VOR/DME on TTT R-166 to ELLVR.

HOARY TRANSITION (VENUS4.HOARY): From over TTT VOR/DME on TTT R-186 to NELYN, then on ACT R-357 to ACT VORTAC, then on ACT R-193 to HOARY.

NAVASOTA TRANSITION (VENUS4.TNV): From over TTT VOR/DME on TTT R-156 to TORNN, then on TTT R-156 and TNV R-334 to TNV VOR/DME.

SAN ANTONIO TRANSITION (VENUS4.SAT): From over TTT VOR/DME on TTT R-186 to NELYN, then on ACT R-357 to ACT VORTAC, then on ACT R-193 to HOARY, then on SAT R-024 to SAT VORTAC.

TORNN TRANSITION (VENUS4.TORNN): From over TTT VOR/DME on TTT R-156 to TORNN.

WACO TRANSITION (VENUS4.ACT): From over TTT VOR/DME on TTT R-186 to NELYN, then on ACT R-357 to ACT VORTAC.

WINDU TRANSITION (VENUS4.WINDU): From over TTT VOR/DME on TTT R-176 to WINDU.

NOTE: COLLEGE STATION TRANSITION: For piston and turboprop aircraft inbound to William P Hobby, Ellington, Scholes Intl at Galveston, or Texas Gulf Coast Rgnl airports. All other aircraft types inbound to all other Houston terminal area airports except George Bush Intcntl/Houston, Conroe/North Houston Rgnl, David Wayne Hooks Meml, Liberty Muni, or Cleveland Muni Airports.

NOTE: ELLVR TRANSITION: For turbojet aircraft inbound to William P Hobby, Ellington, Scholes Intl at Galveston, or Texas Gulf Coast Rgnl Airports.

NOTE: HOARY TRANSITION: For E/F suffixed aircraft.

NOTE: SAN ANTONIO TRANSITION: For aircraft overflying Centex and San Antonio.

NOTE: TORNN TRANSITION: Only for aircraft inbound to George Bush Intcntl/Houston, Conroe/North Houston Rgnl, David Wayne Hooks Meml, Liberty Muni, or Cleveland Muni Airports.

NOTE: WACO TRANSITION: For aircraft inbound to Waco or Gray terminal area airports.

NOTE: WINDU TRANSITION: For aircraft inbound to Austin or San Antonio terminal area.

SC-2, 16 APR 2026 to 14 MAY 2026

SC-2, 16 APR 2026 to 14 MAY 2026

# VENUS FOUR DEPARTURE