

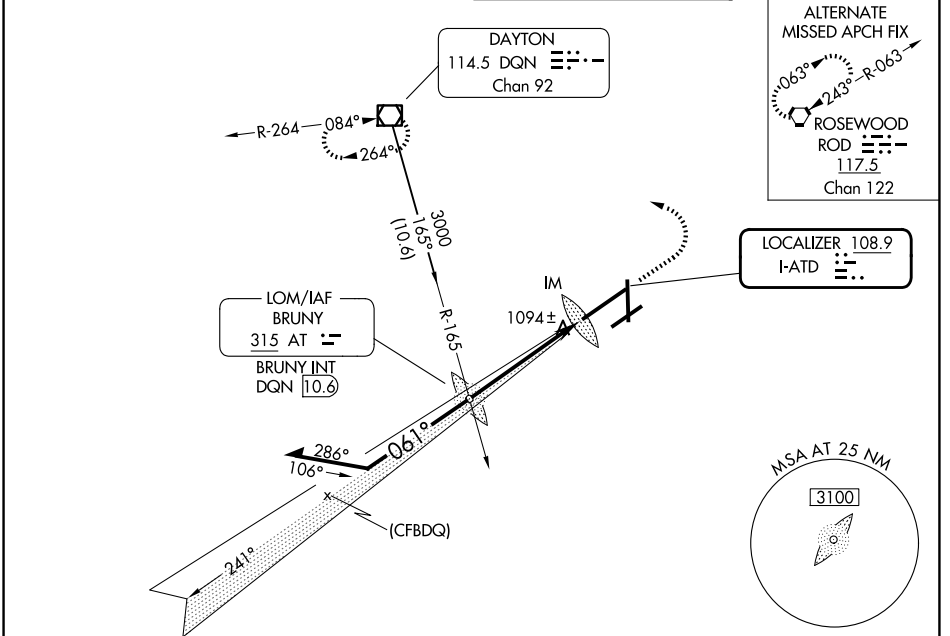
LOC I-ATD 108.9	APP CRS 061°	Rwy Ldg 10900 TDZE 998 Apt Elev 1009
---------------------------	------------------------	---

ILS RWY 6L (CAT II & III)

JAMES M COX DAYTON INTL (DAY)

<p>Simultaneous approach authorized. CAT II: RVR 1000 authorized with specific OPSPEC, MSPEC, or LOA approval and use of autoland or HUD to touchdown.</p>	<p>ALSIF-2</p>	<p>MISSED APPROACH: Climb to 2000 then climbing left turn to 3000 direct DQN VOR/DME and hold.</p>
--	----------------	--

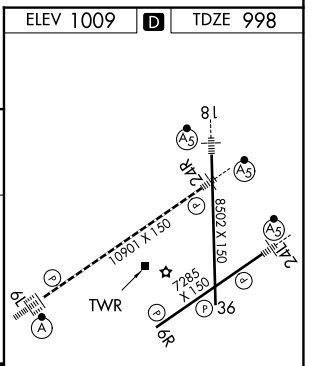
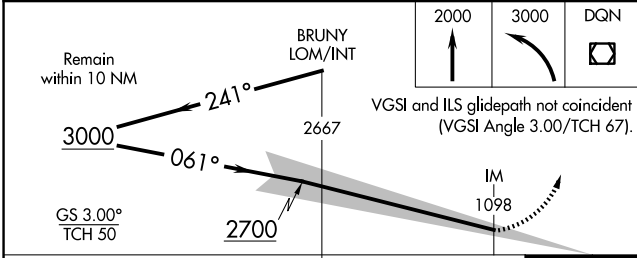
<p>ATIS 125.8</p>	<p>COLUMBUS APP CON 118.85 305.2 (091°-180°) 134.45 323.15 (181°-090°)</p>	<p>DAYTON TOWER 119.9 257.7</p>	<p>GND CON 121.9</p>
------------------------------	--	--	---------------------------------



EC-2, 16 APR 2026 to 14 MAY 2026

EC-2, 16 APR 2026 to 14 MAY 2026

ELEV 1009	D	TDZE 998
-----------	----------	----------



CATEGORY	A	B	C	D
S-ILS 6L	CAT II RA 99/12		100 DA 1098	
S-ILS 6L	CAT III		RVR 06	

CATEGORY II & III ILS - SPECIAL AIRCREW & AIRCRAFT CERTIFICATION REQUIRED

HIRL all Rwys
TDZL/RCLS Rwy 6L
REIL Rwys 6R and 36