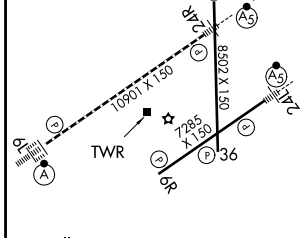
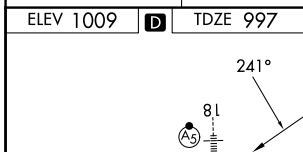
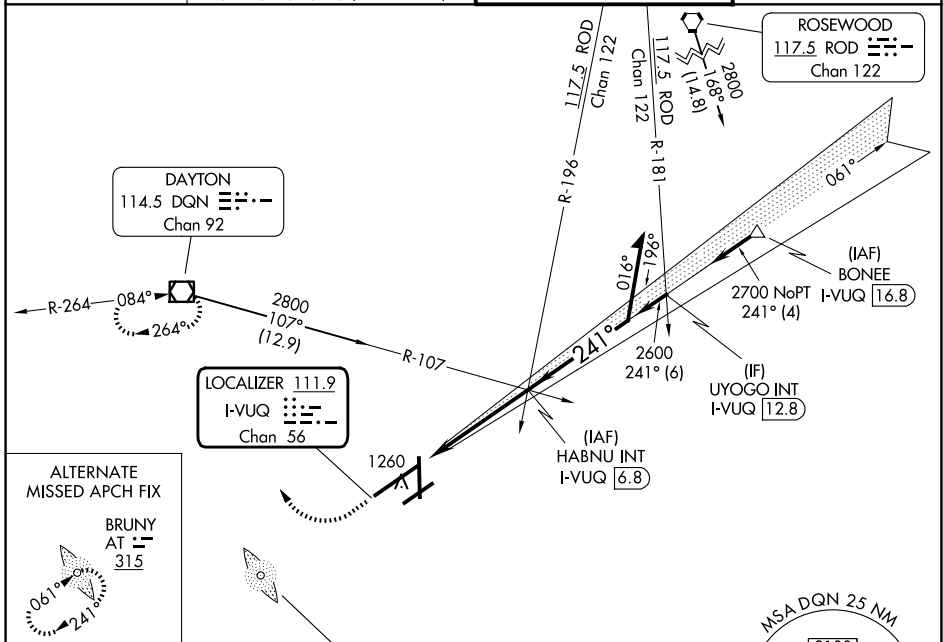


LOC/DME I-VUQ <b>111.9</b> Chan 56	APP CRS <b>241°</b>	Rwy Ldg <b>10900</b> TDZE <b>997</b> Apt Elev <b>1009</b>
------------------------------------------	------------------------	-----------------------------------------------------------------

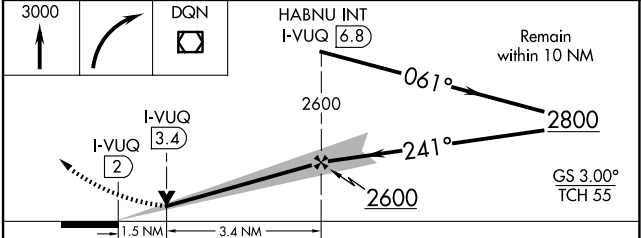
# ILS or LOC RWY 24R

JAMES M COX DAYTON INTL (DAY)

ADF required for alternate missed approach.		MALSR 	MISSED APPROACH: Climb to 3000 then right turn direct DQN VOR/DME and hold.
⚠ Simultaneous approach authorized. For inop ALS, increase S-LOC 24R Cat A/B visibility to 1 SM; increase Cat C/D visibility to 1½ SM.			
ATIS <b>125.8</b>	COLUMBUS APP CON <b>118.85 305.2</b> (091°-180°) <b>134.45 323.15</b> (181°-090°)	DAYTON TOWER <b>119.9 257.7</b>	GND CON <b>121.9</b>



FAF to MAP 4.9 NM					
Knots	60	90	120	150	180
Min:Sec	4:54	3:16	2:27	1:58	1:38



CATEGORY	A	B	C	D
S-ILS 24R	1203/24		206 (200-½)	
S-LOC 24R	1520/24	523 (600-½)	1520/55	523 (600-1)
CIRCLING	1580-1	571 (600-1)	1580-1½ 571 (600-1½)	1640-2 631 (700-2)

EC-2, 16 APR 2026 to 14 MAY 2026

EC-2, 16 APR 2026 to 14 MAY 2026