

LOC I-ATD <b>108.9</b>	APP CRS <b>061°</b>	Rwy Ldg TDZE Apt Elev	<b>10900</b> <b>998</b> <b>1009</b>
---------------------------	------------------------	-----------------------------	---

# ILS or LOC RWY 6L

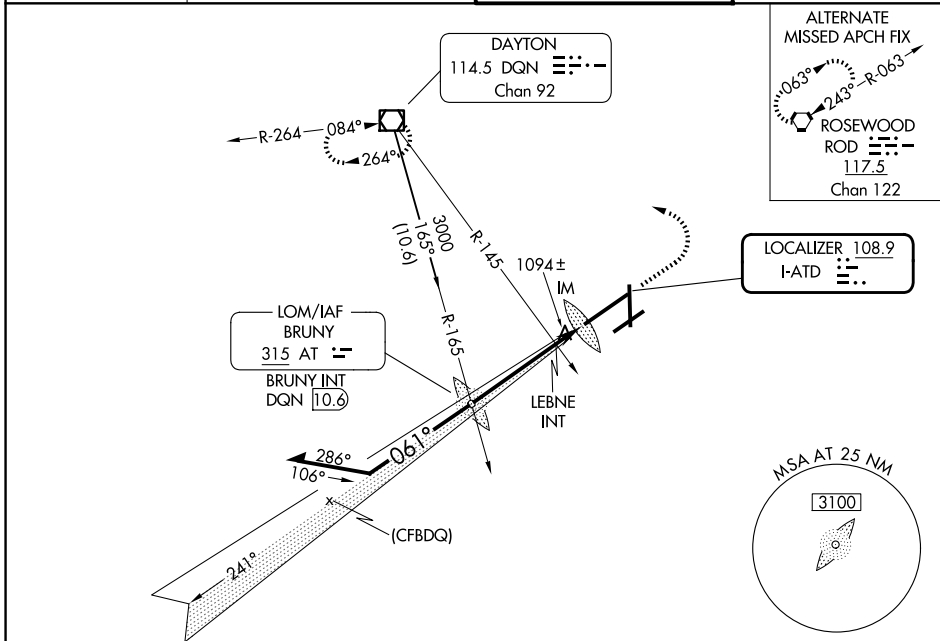
JAMES M COX DAYTON INTL (DAY)

**Simultaneous approach authorized.**  
**For inop ALSF-2, increase S-LOC 6L Cat C/D visibility to 1½ mile.**

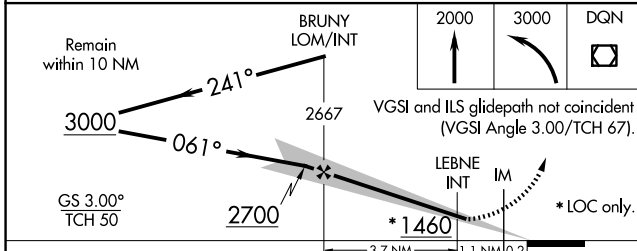
ALSF-2

MISSED APPROACH: Climb to 2000 then climbing left turn to 3000 direct DQN VOR/DME and hold.

ATIS <b>125.8</b>	COLUMBUS APP CON <b>118.85 305.2</b> (091°-180°) <b>134.45 323.15</b> (181°-090°)	DAYTON TOWER <b>119.9 257.7</b>	GND CON <b>121.9</b>
----------------------	---	------------------------------------	-------------------------



ELEV 1009	<b>D</b>	TDZE 998
-----------	----------	----------



ELEV 1009		<b>D</b>	TDZE 998		
HIRL all Rwys					
TDZL/RCLS Rwy 6L					
REIL Rwys 6R and 36					
FAF to MAP 5 NM					
Knots	60	90	120	150	180
Min:Sec	5:00	3:20	2:30	2:00	1:40

CATEGORY	A	B	C	D
S-ILS 6L	1198/18 200 (200-½)			
S-LOC 6L	1460/24	462 (500-½)	1460/50	462 (500-1)
CIRCLING	1580-1	571 (600-1)	1580-1½	1640-2
LEBNE FIX MINIMUMS (DUAL VOR RECEIVERS REQUIRED)				
S-LOC 6L	1380/24	382 (400-½)	1380/35	382 (400-¾)
CIRCLING	1580-1	571 (600-1)	1580-1½	1640-2
571 (600-1½) 631 (700-2)				