

WAAS CH 90414 W06B	APP CRS 061°	Rwy Ldg TDZE Apt Elev	7001 1009 1009
--	------------------------	-----------------------------	---

RNAV (GPS) RWY 6R

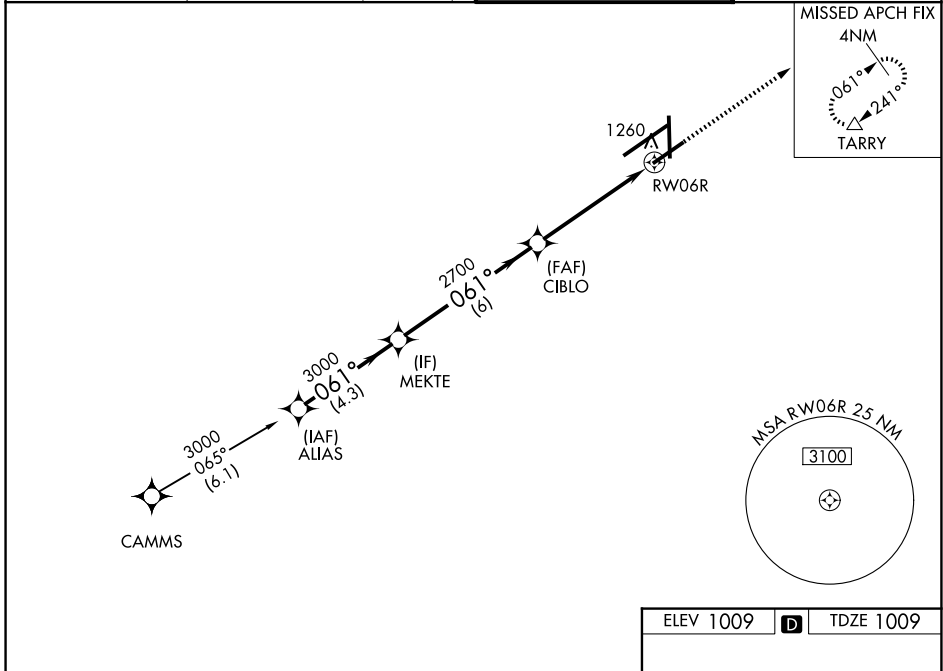
JAMES M COX DAYTON INTL (DAY)

RNP APCH - GPS.

▼ For uncompensated Baro-VNAV systems, LNAV/VNAV NA below -15°C or above 54°C. Rwy 6R helicopter visibility reduction below ¾ SM NA. Simultaneous approach authorized. LNAV procedure NA during simultaneous operations. Use of FD or AP required during simultaneous operations.

MISSED APPROACH: Climb to 3000 direct TARRY and hold.

ATIS 125.8	COLUMBUS APP CON 118.85 305.2 (091°-180°) 134.45 323.15 (181°-090°)	DAYTON TOWER 119.9 257.7	GND CON 121.9
----------------------	---	------------------------------------	-------------------------



EC-2, 16 APR 2026 to 14 MAY 2026

EC-2, 16 APR 2026 to 14 MAY 2026

VGSI and RNAV glidepath not coincident (VGSI Angle 3.00/TCH 50).

	ALIAS	MEKTE	CIBLO	RWY 6R
GP 3.00°	3000	3000	2700	1.5 NM to RWY 6R
TCH 53	061°	061°		
	4.3 NM	6 NM	3.6 NM	1.5 NM
CATEGORY	A	B	C	D
LPV DA		1260-¾	251 (300-¾)	
LNAV/VNAV DA		1496-1¾	487 (500-1¾)	
LNAV MDA	1520-1	511 (600-1)	1520-1½ 511 (600-1½)	1520-1¾ 511 (600-1¾)
CIRCLING	1580-1	571 (600-1)	1580-1½ 571 (600-1½)	1640-2 631 (700-2)

