

# RNAV (RNP) Y RWY 24R

JAMES M COX DAYTON INTL (DAY)

APP CRS	Rwy Ldg	<b>10900</b>
<b>241°</b>	TDZE	<b>997</b>
	Apf Elev	<b>1009</b>

RNP AR APCH.

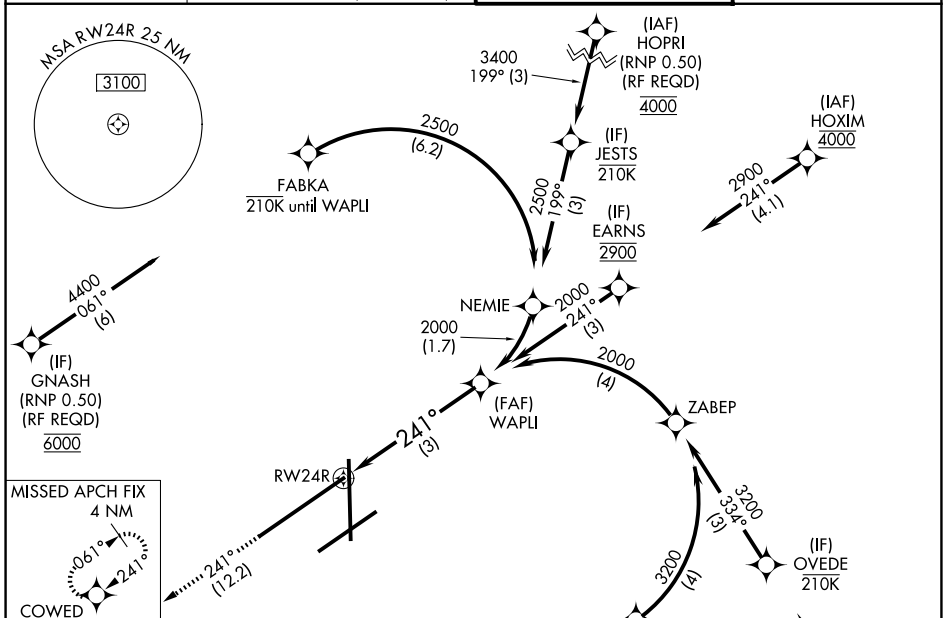
▼ For inop ALS, increase RNP 0.10 all Cats visibility to RVR 5500 and RNP 0.30 all Cats visibility to 1 3/8 SM. For uncompensated Baro-VNAV systems, procedure NA below -19°C or above 54°C.

MALSR

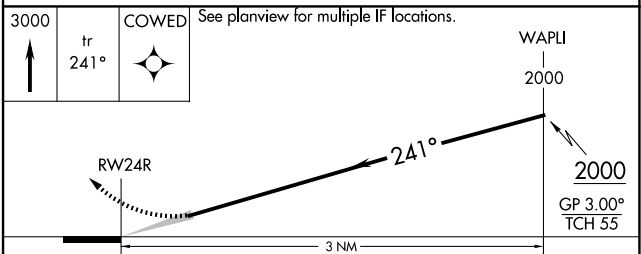
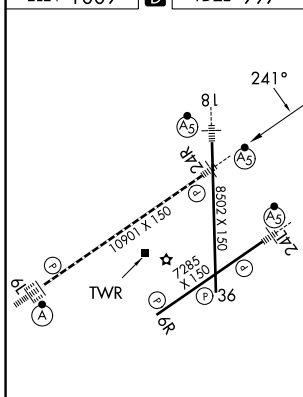


MISSED APPROACH: Climb to 3000 on track 241° COWED and hold.

ATIS	COLUMBUS APP CON	DAYTON TOWER	GND CON
<b>125.8</b>	<b>118.85 305.2</b> (091°-180°) <b>134.45 323.15</b> (181°-090°)	<b>119.9 257.7</b>	<b>121.9</b>



ELEV 1009 **D** TDZE 997



CATEGORY	A	B	C	D
RNP 0.10 DA		1334/35	337 (400-5/8)	
RNP 0.30 DA		1418/50	421 (500-1)	

## AUTHORIZATION REQUIRED

EC-2, 16 APR 2026 to 14 MAY 2026

EC-2, 16 APR 2026 to 14 MAY 2026