

WAAS CH 42913 W06A	APP CRS 061°	Rwy Ldg 10900 TDZE 998 Apt Elev 1009
----------------------------------------	------------------------	-----------------------------------------------------------------

RNAV (GPS) Z RWY 6L

JAMES M COX DAYTON INTL (DAY)

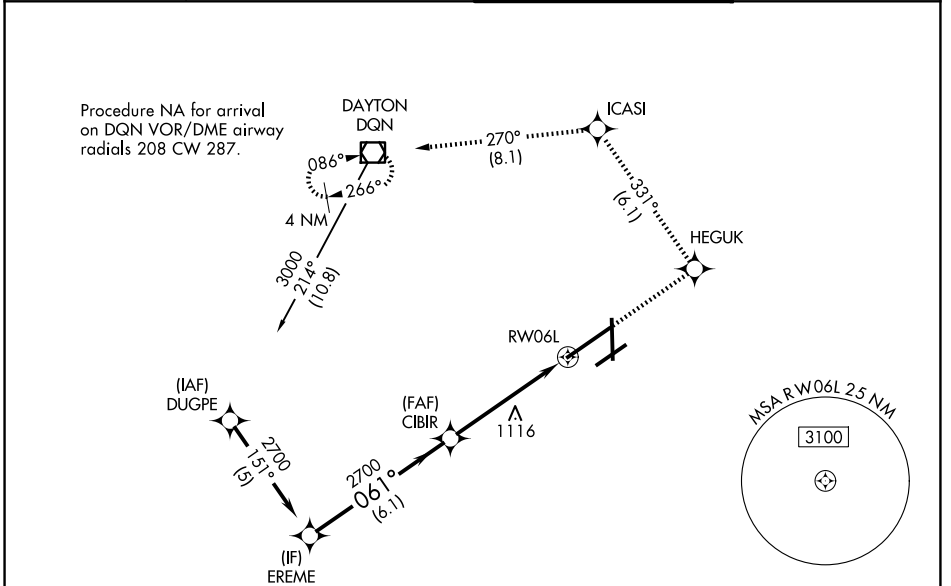
RNP APCH.

Simultaneous approach authorized. LNAV procedure NA during simultaneous operations. For uncompensated Baro-VNAV systems, LNAV/VNAV NA below -19°C or above 54°C. Use of FD or AP required during simultaneous operations. For inop ALS, increase LNAV/VNAV all Cats visibility to RVR 5500 and LNAV Cats C/D to 1¼ SM.

ALSf-2

MISSED APPROACH: Climb to 3000 direct HEGUK and on track 331° to ICASI and on track 270° to DQN VOR/DME and hold.

ATIS 125.8	COLUMBUS APP CON 118.85 305.2 (091°-180°) 134.45 323.15 (181°-090°)	DAYTON TOWER 119.9 257.7	GND CON 121.9
----------------------	-----------------------------------------------------------------------------------------	------------------------------------	-------------------------



ELEV 1009		TDZE 998	
VGSi and RNAV glidepath not coincident (VGSi Angle 3.00/TCH 51).			
EREME		CIBIR	
2700 → 061° → 2700		2700	
GP 3.00° TCH 51		*1.1 NM to RWY06L	
6.1 NM		4 NM	
CATEGORY		D	
LPV DA	A	B	C
LNNAV/VNAV DA	A	B	C
LNNAV MDA	A	B	C
CIRCLING	A	B	C
HIRL all Rwys		TDZL/RCLS Rwy 6L	
REIL Rwys 6R and 36			

EC-2, 16 APR 2026 to 14 MAY 2026

EC-2, 16 APR 2026 to 14 MAY 2026