

APCH CRS	Rwy Idg	7000
233°	TDZE	818
	Arpt Elev	823

(USAF)

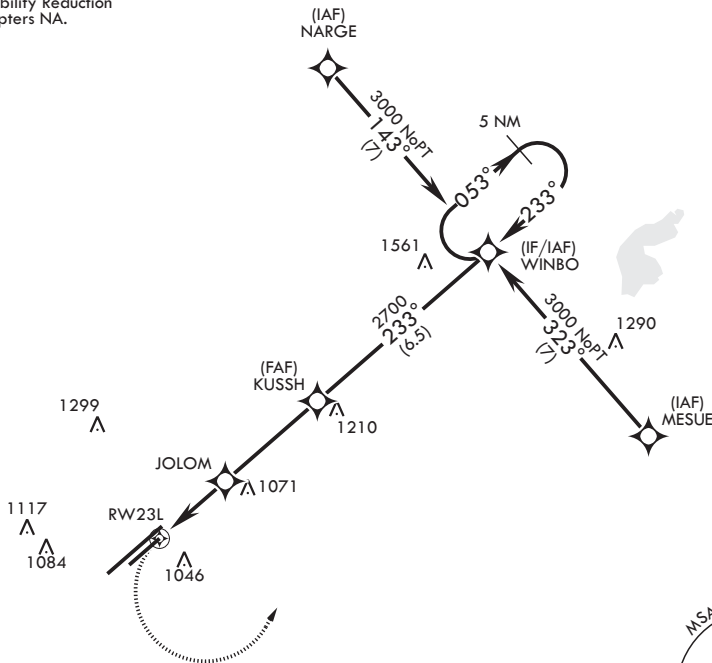
WRIGHT PATTERSON AFB (KFFO)

**▼** \* When Rwy 23R VGSi inop, circling to Rwy 23R NA at night. MISSED APPROACH: Turn left climb to 3000 direct WINBO WPT and hold.

ATIS <b>124.475 269.9</b>	COLUMBUS APP CON/DEP CON <b>118.85 269.275</b>	PATTERSON TOWER <b>127.8 281.45</b>	GND CON <b>121.8 335.8</b>
------------------------------	---	--	-------------------------------

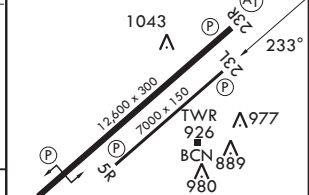
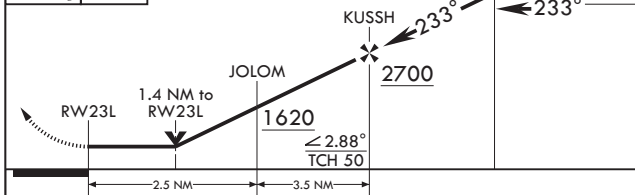
DME/DME RNP -0.3 NA

LNAV Visibility Reduction by Helicopters NA.



EMERG SAFE ALT 100 NM 3300

<b>3000</b>	<b>WINBO</b>	VGSi and descent angle not coincident.	<b>5 NM</b>	<b>ELEV 823</b>	<b>TDZE 818</b>
-------------	--------------	--	-------------	-----------------	-----------------



CATEGORY	A	B	C	D
LNAV MDA	1320-1	502 (500-1)	1320-1 $\frac{3}{8}$	502 (500-1 $\frac{3}{8}$ )
CIRCLING*	1380-1 557 (600-1)	1440-1 617 (700-1)	1560-2 737 (800-2)	1620-2 $\frac{1}{2}$ 797 (800-2 $\frac{1}{2}$ )

HIRL Rwy 5L-23R  
MIRL Rwy 5R-23L

EC-2, 16 APR 2026 to 14 MAY 2026

EC-2, 16 APR 2026 to 14 MAY 2026