

DEL RIO, TEXAS

HI-ILS or LOC/DME Z RWY 13C

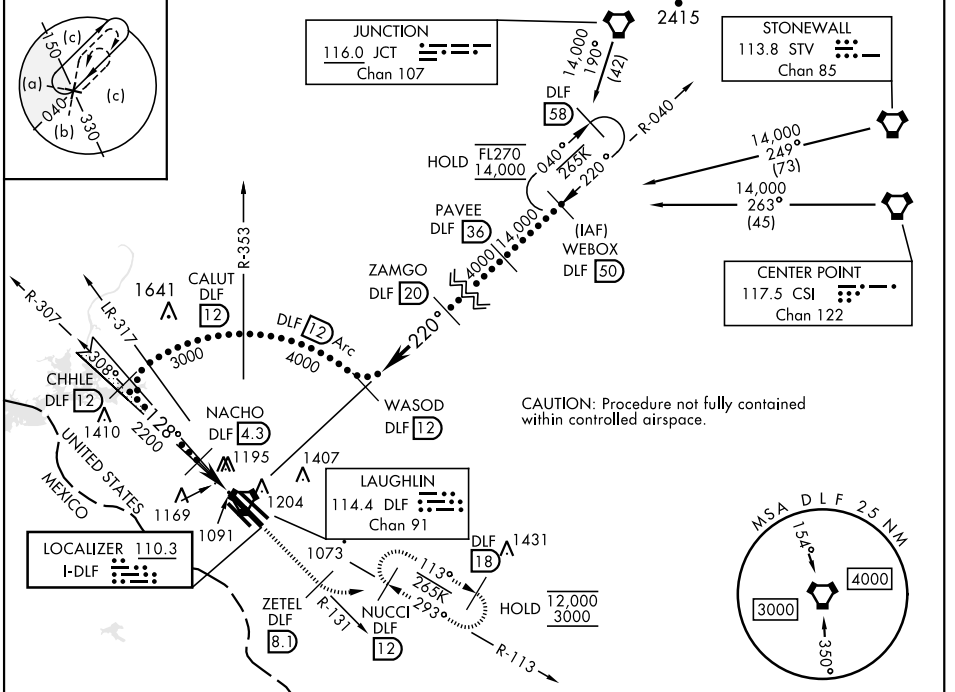
LOC I-DFL <b>110.3</b>	APCH CRS <b>128°</b>	Rwy Idg TDZE Arprt Elev	13C <b>8852</b>	13L <b>8316</b>	13R <b>6571</b>
---------------------------	-------------------------	-------------------------------	--------------------	--------------------	--------------------

[USAF] LAUGHLIN AFB (KDLF)

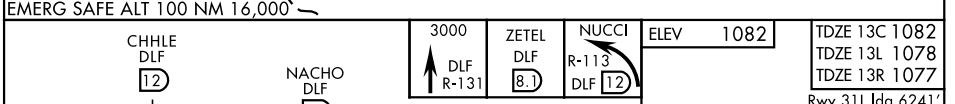
A1
ALSIF-1
MISSED APPROACH: Climb to 3000 on DLF VORTAC R-131 to 8.1 DME (ZETEL), then turn left to intercept DLF R-113 to 12 DME (NUCCI) and hold.

\* When ALS inop, increase RVR to 40 and vis to ¼ mile.  
 \*\* When ALS inop, increase CAT AB RVR to 55 and vis to 1 mile, CAT CDE RVR to 50 and vis to 1 mile.  
 \*\*\* Circling W of Rwy 13R-31L not authorized.

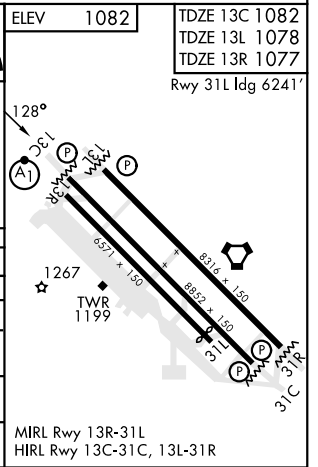
ATIS * <b>114.4 269.9</b>	DEL RIO APP CON <b>119.6 259.1</b>	TOWER * <b>125.2 307.375</b>	GND CON <b>275.8</b>	CLNC DEL <b>120.5 335.8</b>
------------------------------	---------------------------------------	---------------------------------	-------------------------	--------------------------------



CAUTION: Procedure not fully contained within controlled airspace.



CATEGORY	A	B	C	D	E
	1420-24	338 (400-½)	1420-26	338 (400-½)	
S-ILS 13C *	1282/24		200	(200-½)	
S-LOC 13C **	1420/24		338 (400-½)	1420/26 338 (400-½)	
SIDESTEP 13L	1440-1	362 (400-1)	1440-1½ 362 (400-½)	1440-2	362 (400-2)
SIDESTEP 13R	1480-1	403 (400-1)	1480-1½ 403 (400-½)	1480-2	403 (400-2)
CIRCLING ***	1500-1 418 (500-1)	1540-1 458 (500-1)	1700-1¾ 618(700-1¾)	1700-2	1740-2¼ 658(700-2¼)



DEL RIO, TEXAS  
Amdt 6 20FEB25

29°22'N-100°47'W

LAUGHLIN AFB (KDLF)

HI-ILS or LOC/DME Z RWY 13C

SC-3, 16 APR 2026 to 14 MAY 2026

SC-3, 16 APR 2026 to 14 MAY 2026