

DEL RIO, TEXAS

HI-ILS or LOC/DME Z RWY 31C

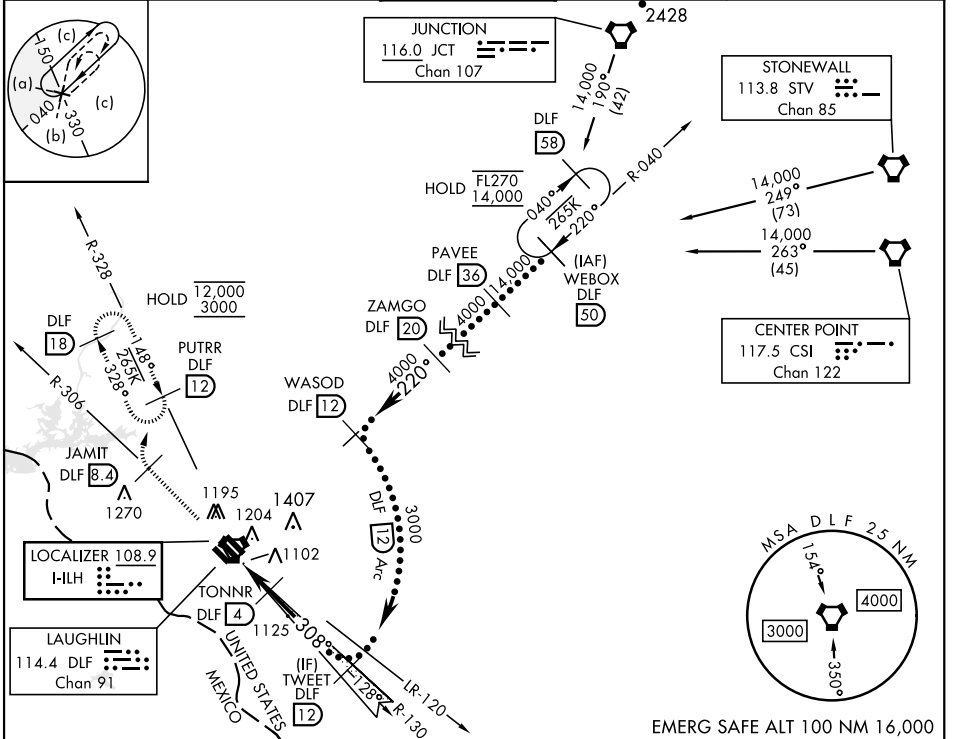
LOC HI-LH <b>108.9</b>	APCH CRS <b>308°</b>	Rwy Idg 31C <b>8852</b> 31L <b>6241</b> 31R <b>8316</b>
		TDZE <b>1079 1080 1078</b>
		Arpt Elev <b>1082</b>

[USAF]

LAUGHLIN AFB (KDLF)

\* Circling not authorized in sector SW of Rwy 13R-31L.  
MISSED APPROACH: Climb to 3000 on DLF VORTAC R-306 to 8.4 DME (JAMIT), then turn right to intercept DLF R-328 to 12 DME (PUTRR) and hold.

ATIS ★ <b>114.4 269.9</b>	DEL RIO APP CON <b>119.6 259.1</b>	TOWER ★ <b>125.2 307.375</b>	GND CON <b>275.8</b>	CLNC DEL <b>120.5 335.8</b>
------------------------------	---------------------------------------	---------------------------------	-------------------------	--------------------------------



3000	JAMIT DLF 8.4	PUTRR DLF 12	TONNR DLF 4	TWEET DLF 12
VGSIs and descent angles not coincidental.				
FOVMO DLF 1.3		GS 3.00° TCH 49		

ELEV 1082	TDZE 31C 1079
	TDZE 31L 1080
	TDZE 31R 1078
Rwy 31L Idg 6241'	
HRL Rwy 13C-31C, 13L-31R	
MRL Rwy 13R-31L	

CATEGORY	A	B	C	D	E
S-ILS 31C	1279-3/4		200	(200-3/4)	
S-LOC 31C	1360-1	281 (300-1)	1360-7/8		281 (300-7/8)
SIDESTEP 31L	1360-1	280 (300-1)	1360-1 1/2 280 (300-1 1/2)	1360-2	280 (300-2)
SIDESTEP 31R	1380-1	302 (300-1)	1380-1 1/2 302 (300-1 1/2)	1380-2	302 (300-2)
CIRCLING*	1500-1 418 (500-1)	1540-1 458 (500-1)	1700-1 1/4 618(700-1 1/4)	1700-2 618 (700-2)	1740-2 1/4 658(700-2 1/4)

DEL RIO, TEXAS  
Amdt 6 05OCT23

29°22'N-100°47'W

LAUGHLIN AFB (KDLF)

HI-ILS or LOC/DME Z RWY 31C

SC-3, 16 APR 2026 to 14 MAY 2026

SC-3, 16 APR 2026 to 14 MAY 2026