


DEL RIO, TEXAS

# ILS or LOC/DME Y RWY 13C

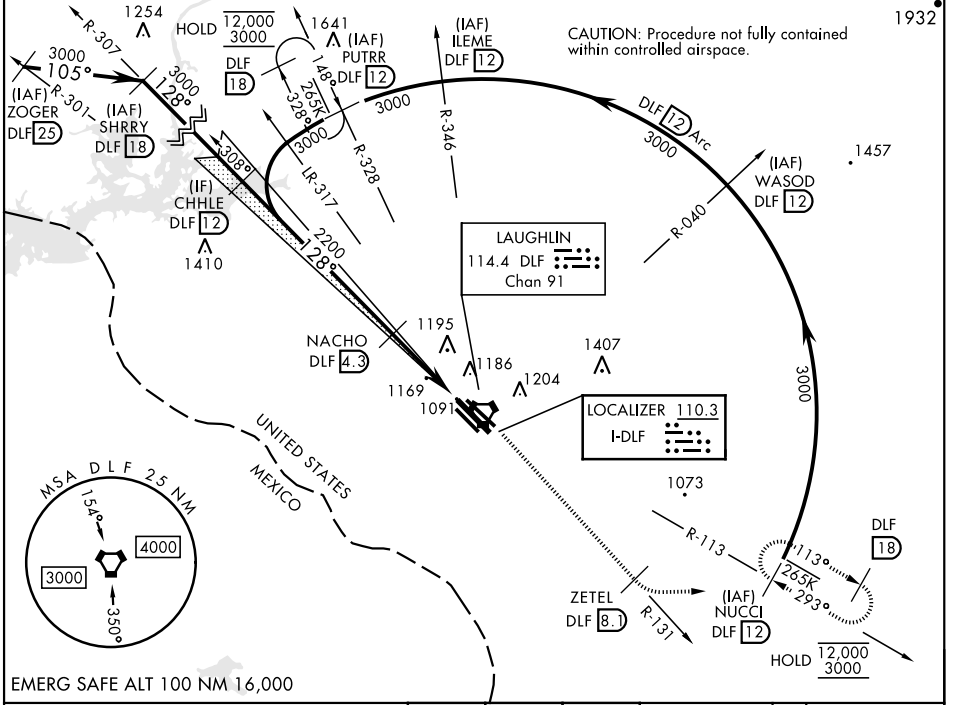
LOC I-DLF <b>110.3</b>	APCH CRS <b>128°</b>	Rwy Idg <b>8852 8316 6571</b>	13C <b>1082</b>	13L <b>1078</b>	13R <b>1077</b>
		TDZE <b>1082</b>	Arprt Elev <b>1082</b>		

[USAF] LAUGHLIN AFB (KDLF)

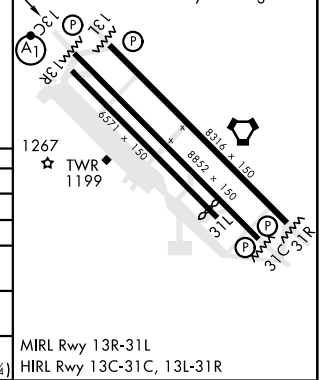
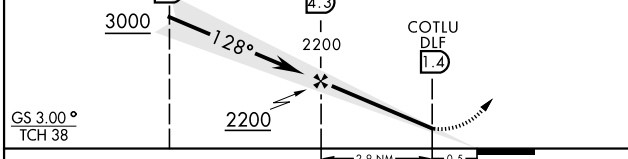
**⚠** \* When ALS inop, increase RVR to 40 and vis to 3/4 mile.  
 \*\* When ALS inop, increase CAT AB RVR to 55 and vis to 1 mile, CAT CDE RVR to 50 and vis to 1 mile.  
 \*\*\* Circling W of Rwy 13R-31L not authorized.

ALS-F-1  
**A1**   
 MISSED APPROACH: Climb to 3000 on DLF VORTAC R-131 to 8.1 DME (ZETEL), then turn left to intercept DLF R-113 to 12 DME (NUCCI) and hold.

ATIS ★ <b>114.4 269.9</b>	DEL RIO APP CON <b>119.6 259.1</b>	TOWER ★ <b>125.2 307.375</b>	GND CON <b>275.8</b>	CLNC DEL <b>120.5 335.8</b>
------------------------------	---------------------------------------	---------------------------------	-------------------------	--------------------------------



CHHLE DLF 12	NACHO DLF 4.3	COTLU DLF 1.4	ZETEL DLF 8.1	NUCCI R-113 DLF 12	ELEV 1082	TDZE 13C 1082	TDZE 13L 1078	TDZE 13R 1077
GS 3.00° TCH 38			R-131		Rwy 31L Idg 6241'			



CATEGORY	A	B	C	D	E
S-ILS 13C*	1282/24		200	(200-1/2)	
S-LOC 13C**	1420/24	338 (400-1/2)	1420/26	338 (400-1/2)	
SIDESTEP 13L	1440-1	1440-1 1/2		1440-2	
	362 (400-1)	362(400-1 1/2)		362 (400-2)	
SIDESTEP 13R	1480-1	1480-1 1/2		1480-2	
	403 (400-1)	403(400-1 1/2)		403 (400-2)	
CIRCLING ***	1500-1	1540-1	1700-1 3/4	1700-2	1740-2 1/4
	418 (500-1)	458 (500-1)	618(700-1 3/4)	618 (700-2)	658 (700-2 1/4)

MRL Rwy 13R-31L  
 HRL Rwy 13C-31C, 13L-31R

DEL RIO, TEXAS

29°22'N-100°47'W

LAUGHLIN AFB (KDLF)

Amtd 6 20FEB25

# ILS or LOC/DME Y RWY 13C

SC-3, 16 APR 2026 to 14 MAY 2026

SC-3, 16 APR 2026 to 14 MAY 2026