

# RNAV (GPS) RWY 13C

APCH CRS 128°	Rwy Idg TDZE Arprt Elev	13C 8852 1082	13L 8316 1078	13R 6571 1077
------------------	-------------------------------	---------------------	---------------------	---------------------

(USAF)

LAUGHLIN AFB (KDLF)

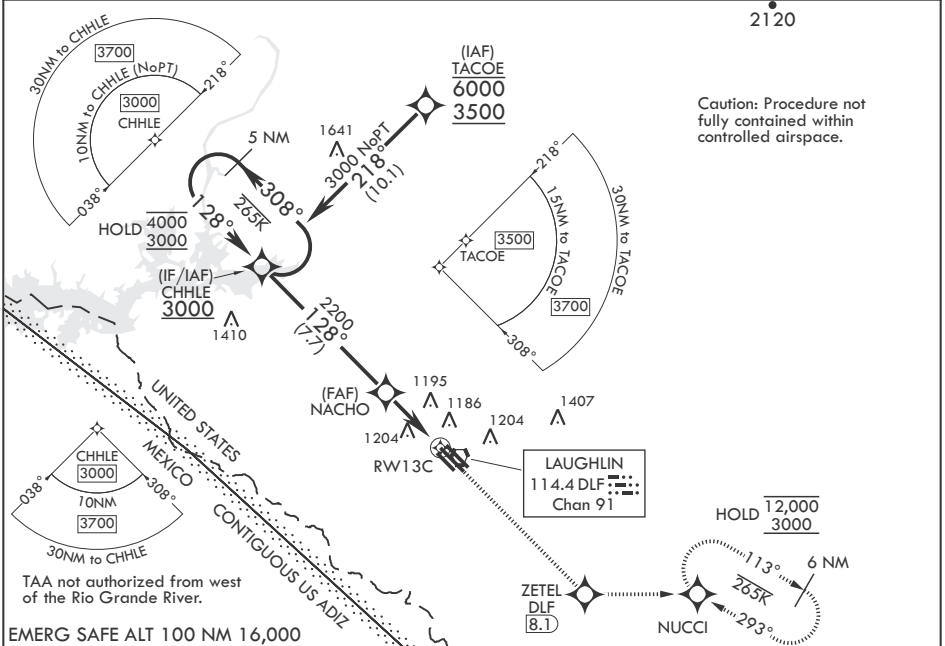
RNP APCH - GPS

▼ \* When ALS inop, increase CAT AB RVR to 55 and vis to 1 mile, CAT CDE vis to 1 1/4 miles.  
\*\* Circling SW of Rwy 13R-31L not authorized.

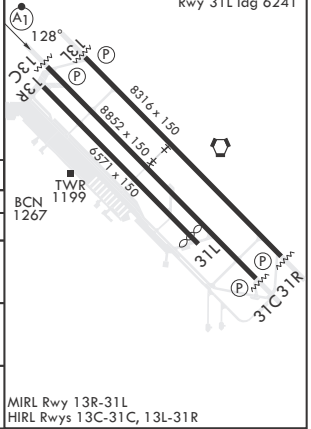
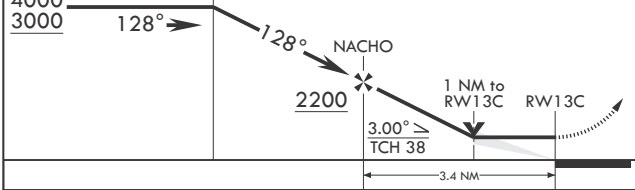


MISSED APPROACH: Climb to 3000 direct ZETEL, then track 083° to NUCCI and hold.

ATIS★ 114.4 269.9	DEL RIO APP CON 119.6 259.1	TOWER★ 125.2 307.375	GND CON 275.8	CLNC DEL 120.5 335.8
----------------------	--------------------------------	-------------------------	------------------	-------------------------



5 NM Holding Pattern	3000	ZETEL	tr 083°	NUCCI	ELEV 1082	TDZE 13C 1082	TDZE 13L 1078	TDZE 13R 1077
----------------------	------	-------	---------	-------	-----------	---------------	---------------	---------------



CATEGORY	A	B	C	D	E
LNAV MDA*	1440/24 358 (400-½)		1440/30 358 (400-¾)		
SIDESTEP 13L	1440-1 362 (400-1)		1440-1½ 362 (400-1½)	1440-2 362 (400-2)	
SIDESTEP 13R	1480-1 403 (400-1)		1480-1½ 403 (400-1½)	1480-2 403 (400-2)	
☐ CIRCLING**	1500-1 418 (500-1)	1540-1 458 (500-1)	1700-1¾ 618 (700-1¾)	1700-2 618 (700-2)	1740-2¼ 658 (700-2¼)

DEL RIO, TEXAS 29°22'N - 100°47'W LAUGHLIN AFB (KDLF)

# RNAV (GPS) RWY 13C

SC-3, 16 APR 2026 to 14 MAY 2026

SC-3, 16 APR 2026 to 14 MAY 2026