

VORTAC DTA <b>116.1</b> Chan <b>108</b>	APP CRS <b>166°</b>	Rwy Ldg <b>6065</b> TDZE <b>4759</b> Apt Elev <b>4760</b>
---	------------------------	---

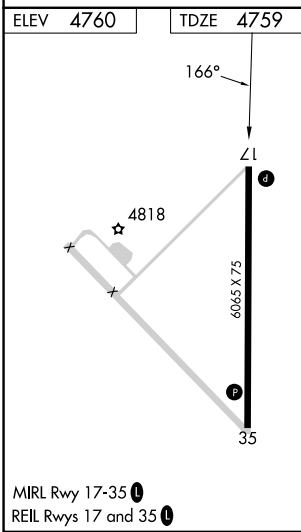
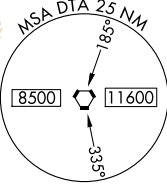
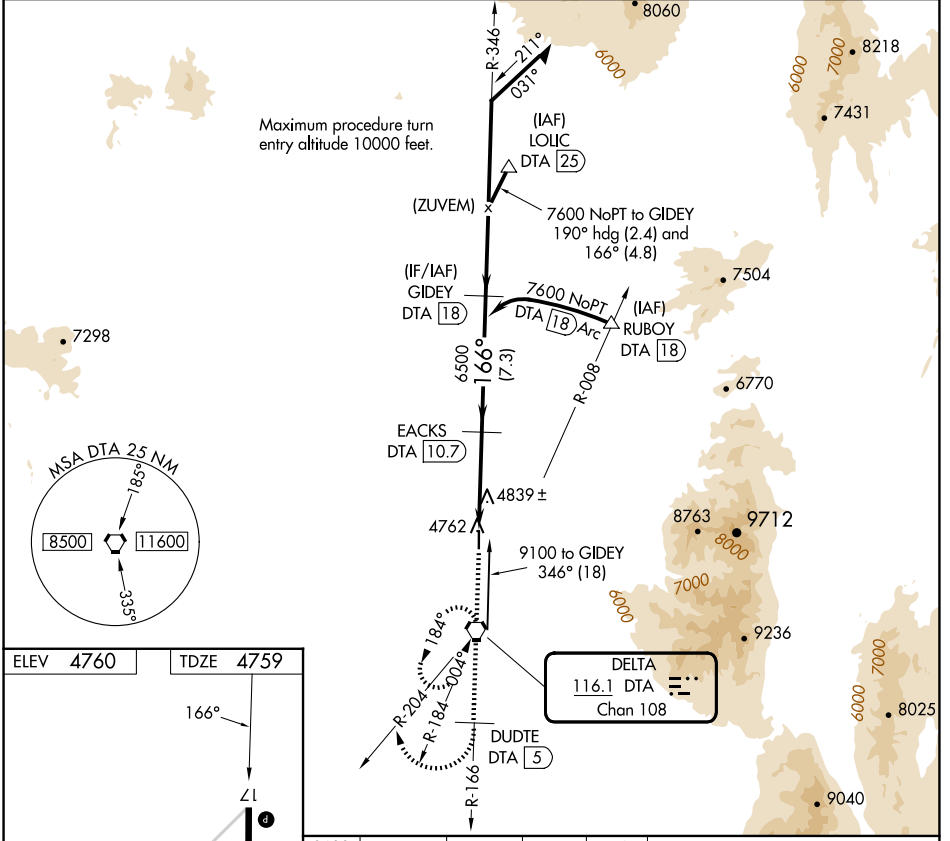
# VOR/DME RWY 17

DELTA MUNI (DTA)

**NA** Helicopter visibility reduction below 3/4 SM NA.  
If local altimeter setting not received, procedure NA.

MISSED APPROACH: Climb to 9600 via DTA VORTAC R-346 and R-166 to DUDTE/5 DME and climbing right turn via DTA VORTAC R-204 to DTA VORTAC and hold, continue climb-in-hold to 9600.

AWOS-3 <b>127.75</b>	SALT LAKE CENTER <b>127.825 239.025</b>	UNICOM <b>122.8 (CTAF)</b>
-------------------------	--	-------------------------------



9600	DTA R-346 and DTA R-166	DUDTE DTA [5]	DTA R-204	GIDEY DTA [18]	Remain within 10 NM
	DTA [6.3]	EACKS DTA [10.7]	DTA [5.3]	9100	7600
	1 NM	4.4 NM	7.3 NM	346°	166°
CATEGORY	A	B	C	D	
S-17		5100-1	341 (400-1)		
CIRCLING	5160-1 400 (400-1)	5220-1 460 (500-1)	5220-1½ 460 (500-1½)	5320-2 560 (600-2)	

≤ 3.00° TCH 40

7600

6500

9100

346°

166°

VGSI and descent angles not coincident (VGSI Angle 3.00/TCH 48).

SW-4, 16 APR 2026 to 14 MAY 2026

SW-4, 16 APR 2026 to 14 MAY 2026