

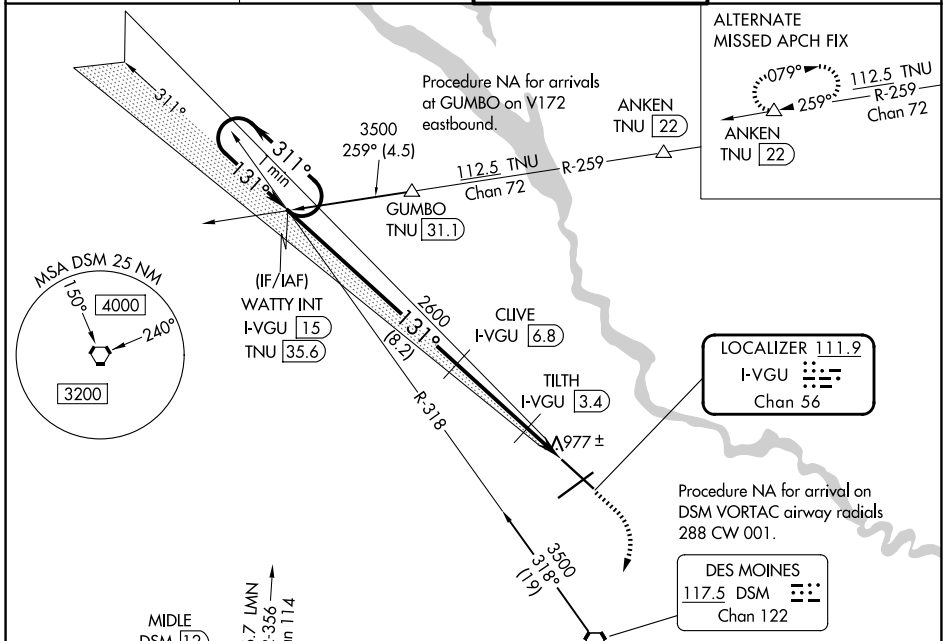
LOC/DME I-VGU 111.9 Chan 56	APP CRS 131°	Rwy Ldg TDZE 922 Apt Elev 958	9001 922 958
---	------------------------	---	---

ILS or LOC RWY 13

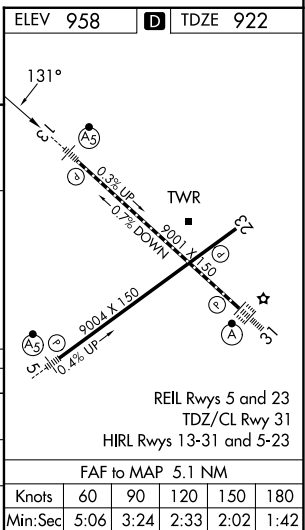
DES MOINES INTL (DSM)

<p>▼ DME required. For inop ALS, increase S-LOC 13 Cats C/D visibility to RVR 4500.</p> <p>▲ #RVR 1800 authorized with use of FD or AP or HUD to DA.</p>	<p>MALSR</p>	<p>MISSED APPROACH: Climb to 1600 then climbing right turn to 3000 direct DSM VORTAC then on DSM VORTAC R-254 to MIDDLE INT/DSM 12 DME and hold.</p>
--	--------------	--

<p>ATIS 119.55</p>	<p>DES MOINES APP CON 123.9 307.15</p>	<p>DES MOINES TOWER 118.3 257.8</p>	<p>GND CON 121.9 348.6</p>
-------------------------------	---	--	---------------------------------------



<p>One Minute Holding Pattern</p> <p>3500 ← 311°</p> <p>→ 131°</p> <p>GS 3.00° TCH 56</p>	<p>WATTY INT I-VGU [15]</p>	1600	3000	DSM	DSM R-254	MIDDLE
		CLIVE I-VGU [6.8]	TILTH I-VGU [3.4]	*LOC only		
<p>3500 ← 311°</p> <p>→ 131°</p> <p>2600</p> <p>*1440</p> <p>I-VGU [2.5]</p> <p>I-VGU [1.7]</p>						
CATEGORY	A	B	C	D		
S-ILS 13#	1122/24		200 (200-½)			
S-LOC 13	1240/24		318 (300-½)			
CIRCLING	1420-1	462 (500-1)	1600-1¾ 642 (700-1¾)	1760-2½ 802 (900-2½)		



NC-3, 16 APR 2026 to 14 MAY 2026

NC-3, 16 APR 2026 to 14 MAY 2026