

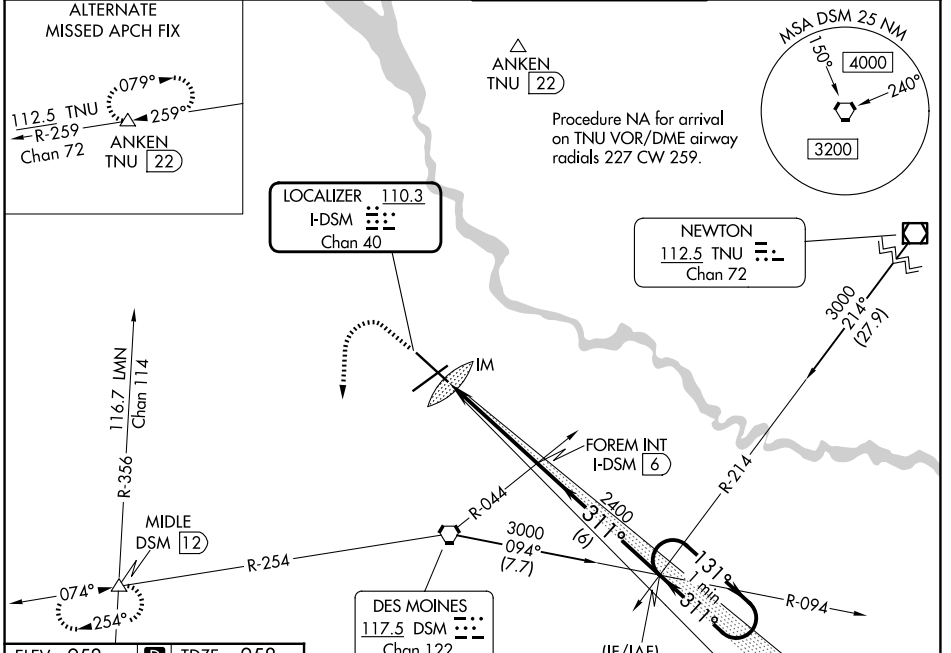
LOC/DME I-DSM 110.3 Chan 40	APP CRS 311°	Rwy Ldg TDZE Apt Elev	9001 958 958
---	------------------------	-----------------------------	---

ILS or LOC RWY 31

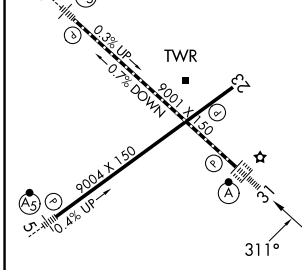
DES MOINES INTL (DSM)

For inop ALS, increase S-ILS 31 Cat E visibility to RVR 4000 and S-LOC 31 Cat E visibility to RVR 6000.	ALSF-2 	MISSED APPROACH: Climb to 1600 then climbing left turn to 3000 on heading 180° and on DSM VORTAC R-254 to MIDDLE INT/12 DME and hold.
---	------------	---

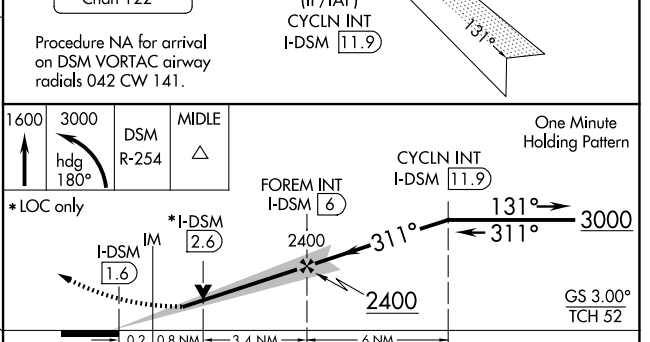
ATIS 119.55	DES MOINES APP CON 123.9 307.15	DES MOINES TOWER 118.3 257.8	GND CON 121.9 348.6
-----------------------	---	--	-------------------------------



ELEV 958	D	TDZE 958
----------	----------	----------



REIL Rwy 5 and 23 TDZ/CL Rwy 31 HIRL Rwy 13-31 and 5-23 FAF to MAP 4.4 NM												
<table border="1"> <tr> <td>Knots</td> <td>60</td> <td>90</td> <td>120</td> <td>150</td> <td>180</td> </tr> <tr> <td>Min:Sec</td> <td>4:24</td> <td>2:56</td> <td>2:12</td> <td>1:46</td> <td>1:28</td> </tr> </table>	Knots	60	90	120	150	180	Min:Sec	4:24	2:56	2:12	1:46	1:28
Knots	60	90	120	150	180							
Min:Sec	4:24	2:56	2:12	1:46	1:28							



CATEGORY	A	B	C	D	E
S-ILS 31	1158/18 200 (200-½)				
S-LOC 31	1340/24	382 (400-½)	1340/35 382 (400-¾)		
CIRCLING	1420-1	462 (500-1)	1600-1½	1760-2½	1760-2¾ 642 (700-1½) 802 (900-2½) 802 (900-2¾)

NC-3, 16 APR 2026 to 14 MAY 2026

NC-3, 16 APR 2026 to 14 MAY 2026