

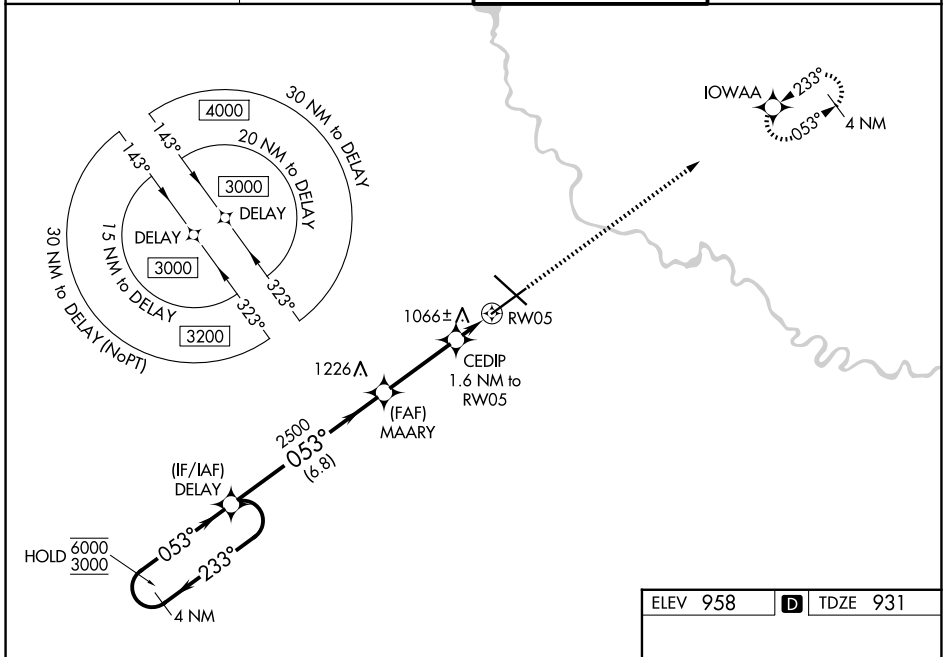
WAAS CH 69202 W05A	APP CRS 053°	Rwy Ldg 9004 TDZE 931 Apt Elev 958
--	------------------------	--

RNAV (GPS) RWY 5

DES MOINES INTL (DSM)

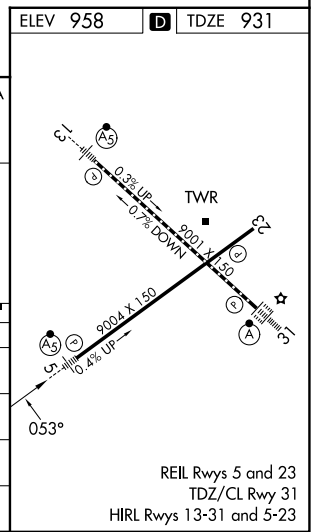
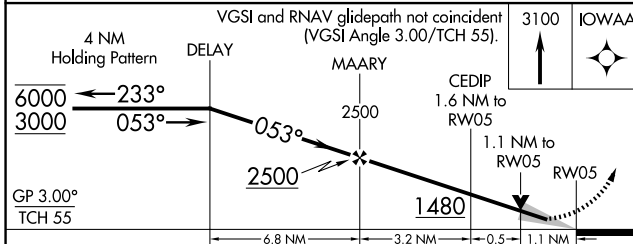
RNP APCH - GPS.	MALSR	MISSED APPROACH: Climb to 3100 direct IOWAA and hold.
<p>▼ For uncompensated Baro-VNAV systems, LNAV/VNAV NA below -22°C or above 54°C. For inop ALS, increase LNAV/VNAV all Cats visibility to RVR 4500.</p> <p>*RVR 1800 authorized with use of FD or AP or HUD to DA.</p>		

ATIS 119.55	DES MOINES APP CON 123.9 307.15	DES MOINES TOWER 118.3 257.8	GND CON 121.9 348.6
-----------------------	---	--	-------------------------------



NC-3, 16 APR 2026 to 14 MAY 2026

NC-3, 16 APR 2026 to 14 MAY 2026



CATEGORY	A	B	C	D
LPV DA*		1131/24	200 (200-½)	
LNAV/VNAV DA		1247/24	316 (300-½)	
LNAV MDA	1320/24	389 (400-½)	1320/35	389 (400-⅝)
CIRCLING	1420-1	462 (500-1)	1600-1¾ 642 (700-1¾)	1760-2½ 802 (900-2½)