

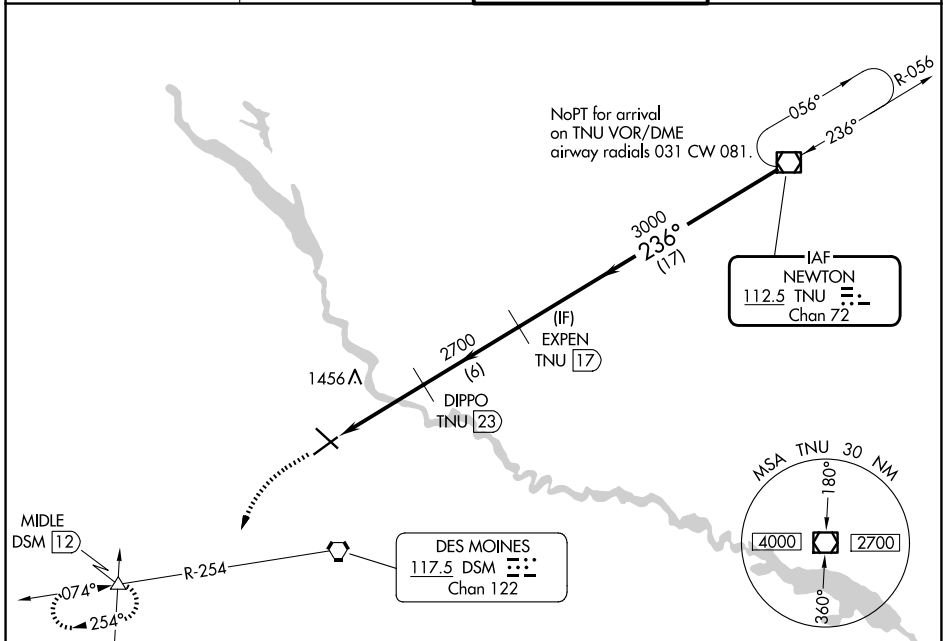
VOR/DME TNU 112.5 Chan 72	APP CRS 236°	Rwy Ldg TDZE 9004 939 Apt Elev 958
--	------------------------	---

VOR RWY 23

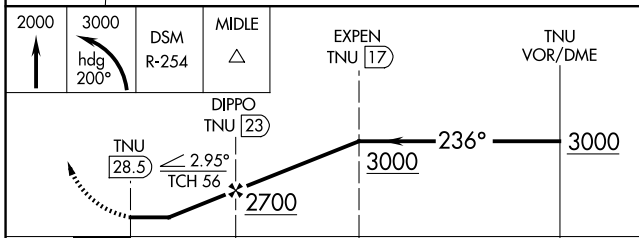
DES MOINES INTL (DSM)

DME required.	MISSED APPROACH: Climb to 2000 then climbing left turn to 3000 on heading 200° and on DSM VORTAC R-254 direct MIDLE INT/DSM 12 DME and hold.
Rwy 23 helicopter visibility reduction below 3/4 SM NA.	

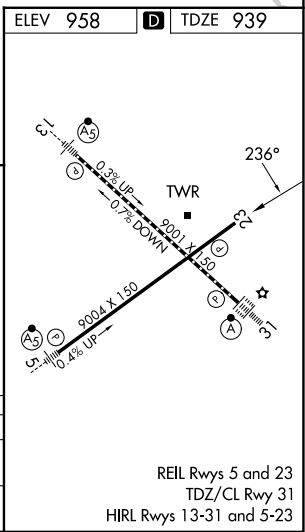
ATIS 119.55	DES MOINES APP CON 123.9 307.15	DES MOINES TOWER 118.3 257.8	GND CON 121.9 348.6
-----------------------	---	--	-------------------------------



ELEV 958	TDZE 939
----------	----------



CATEGORY	A	B	C	D
S-23	1720-1 781 (800-1)	1720-1 1/4 781 (800-1 1/4)	1720-2 1/2	781 (800-2 1/2)
CIRCLING	1720-1 762 (800-1)	1720-1 1/4 762 (800-1 1/4)	1720-2 1/2 762 (800-2 1/2)	1760-2 1/2 802 (900-2 1/2)



NC-3, 16 APR 2026 to 14 MAY 2026

NC-3, 16 APR 2026 to 14 MAY 2026

REIL Rwy 5 and 23
TDZ/CL Rwy 31
HIRL Rwy 13-31 and 5-23