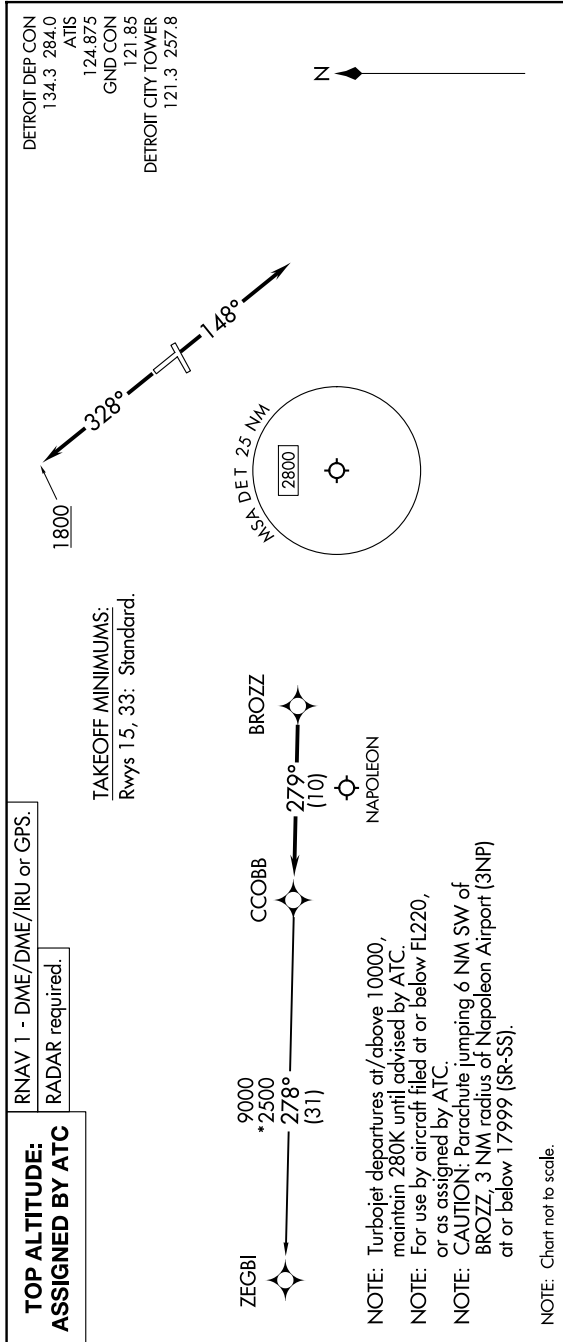


EC-1, 16 APR 2026 to 14 MAY 2026



DEPARTURE ROUTE DESCRIPTION

**TAKEOFF RUNWAY 15:** Climb on heading 148° or as assigned by ATC, thence....  
**TAKEOFF RUNWAY 33:** Climb on heading 328° to 1800 then as assigned by ATC, thence....  
 ....for RADAR vectors to BROZZ, then on track 279° to CCOBB, then on (transition).  
 Maintain ATC assigned altitude, expect filed altitude 10 minutes after departure.

ZEGBI TRANSITION (CCOBB3.ZEGBI):

EC-1, 16 APR 2026 to 14 MAY 2026