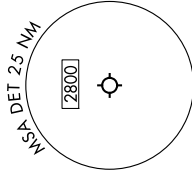
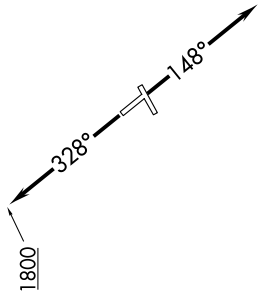


EC-1, 16 APR 2026 to 14 MAY 2026

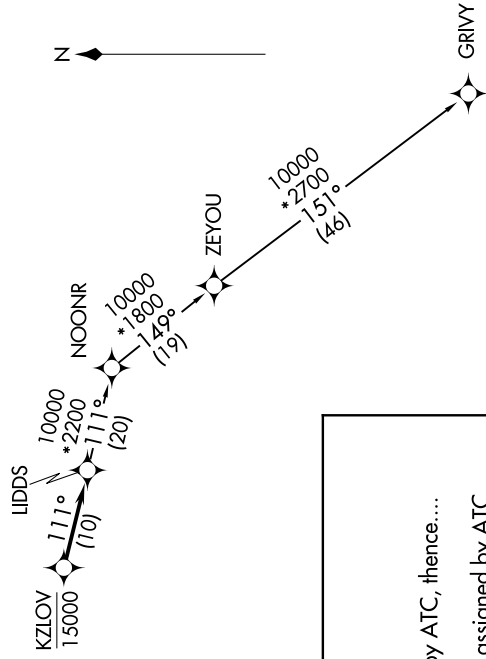
DETROIT DEP CON  
134.3 284.0  
ATIS  
124.875  
GND CON  
121.85  
DETROIT CITY TOWER  
121.3 257.8

RNAV - DME/DME/IRU or GPS.  
RADAR required.  
RADAR required for non-GPS equipped aircraft.

TAKEOFF MINIMUMS:  
Rwys 15, 33: Standard.



NOTE: Turbojet departures at/above 10000, maintain 280K until advised by ATC.



**DEPARTURE ROUTE DESCRIPTION**

**TAKEOFF RUNWAY 15:** Climb on heading 148° or as assigned by ATC, thence....

**TAKEOFF RUNWAY 33:** Climb on heading 328° to 1800 then as assigned by ATC, thence....

.... for RADAR vectors to cross KZLOV at or below 15000, then on track 111° to LIDDS, then on (transition). Maintain ATC assigned altitude, expect filed altitude 10 minutes after departure.

**GRIVY TRANSITION (LIDDS4.GRIVY):**

NOTE: Chart not to scale.

EC-1, 16 APR 2026 to 14 MAY 2026