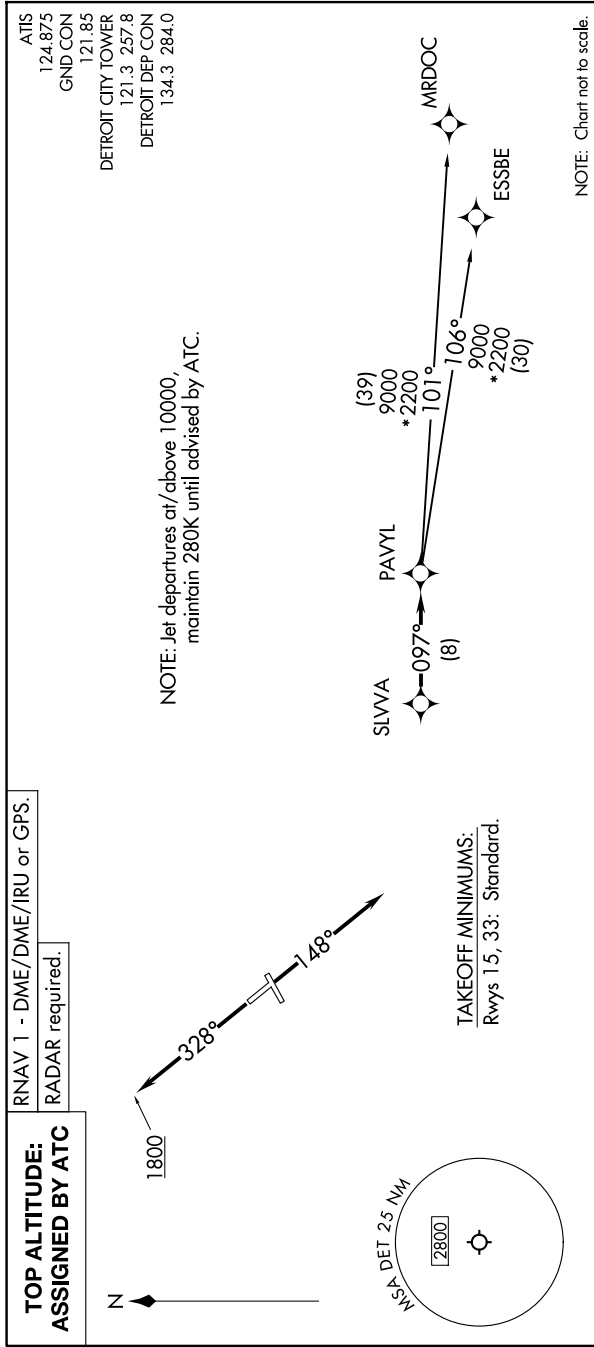


EC-1, 16 APR 2026 to 14 MAY 2026



DEPARTURE ROUTE DESCRIPTION

TAKEOFF RUNWAY 15: Climb on heading 148° or as assigned by ATC, thence....  
TAKEOFF RUNWAY 33: Climb on heading 328° to 1800 then as assigned by ATC, thence....

... for RADAR vectors to SLVA, then on track 097° to PAVYL, then on (transition). Maintain 17000 or as assigned by ATC, expect filed altitude 10 minutes after departure.

ESSBE TRANSITION (PAVYL3.ESSBE):  
MRDOC TRANSITION (PAVYL3.MRDOC):

EC-1, 16 APR 2026 to 14 MAY 2026