

WAAS CH 63211 W15A	APP CRS 148°	Rwy Ldg TDZE Apt Elev	5092 623 624
----------------------------------------	------------------------	-----------------------------	-----------------------------------------

RNAV (GPS) RWY 15

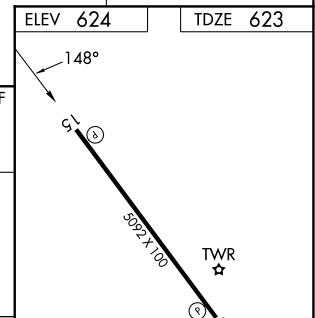
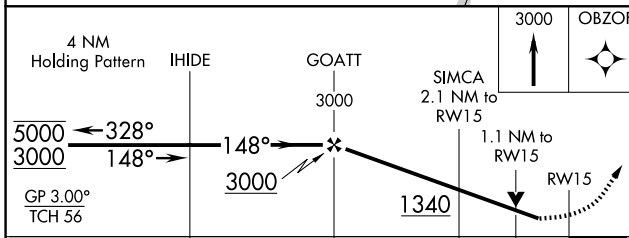
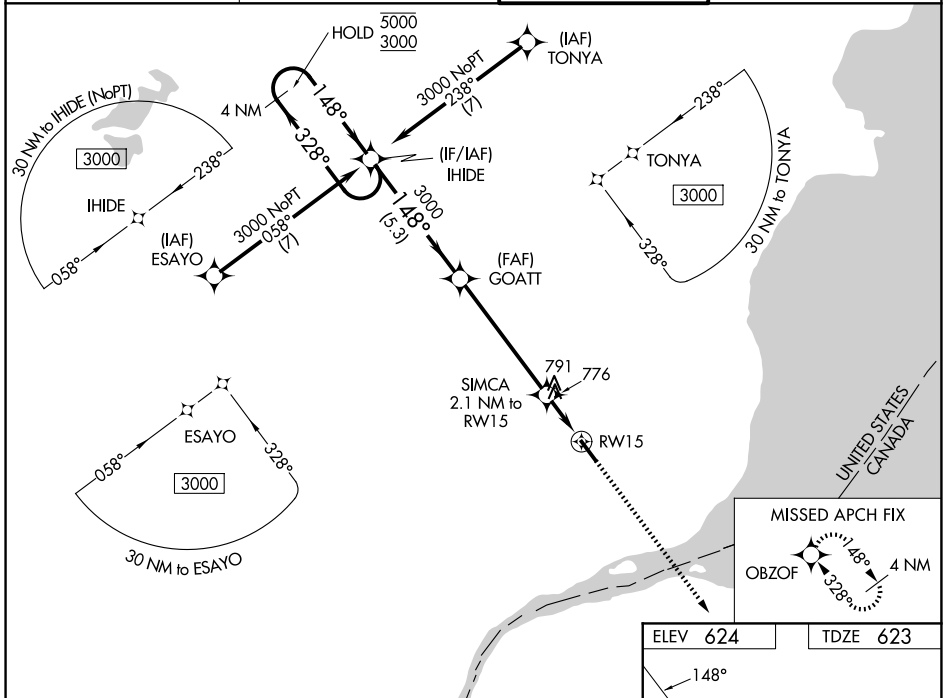
COLEMAN A YOUNG MUNI (DET)

RNP APCH - GPS.

⚠ Rwy 15 helicopter visibility reduction below $\frac{3}{4}$ SM NA. For uncompensated Baro-VNAV systems, LNAV/VNAV NA below -17°C or above 54°C. Baro-VNAV and VDP NA when using DTW altimeter setting.

MISSED APPROACH: Climb to 3000 direct OBZOF and hold.

ATIS 124.875	DETROIT APP CON 134.3 284.0	DETROIT CITY TOWER 121.3 257.8	GND CON 121.85
------------------------	---------------------------------------	------------------------------------------	--------------------------



CATEGORY	A	B	C	D
LPV DA		910- $\frac{7}{8}$	287 (300- $\frac{7}{8}$)	
LNAV/VNAV DA		1016- $1\frac{1}{8}$	393 (400- $1\frac{1}{8}$)	
LNAV MDA	1040-1	417 (500-1)	1040- $1\frac{1}{8}$	417 (500- $1\frac{1}{8}$)
CIRCLING	1180-1	556 (600-1)	1320-2 696 (700-2)	1500- $2\frac{3}{4}$ 876 (900- $2\frac{3}{4}$)

ELEV 624 TDZE 623

MIRL Rwy 7-25
HIRL Rwy 15-33
REIL Rws 15 and 33

EC-1, 16 APR 2026 to 14 MAY 2026

EC-1, 16 APR 2026 to 14 MAY 2026