

(TRMML4.TRMML) 24137

# TRMML FOUR DEPARTURE (RNAV)

AL-118 (FAA)

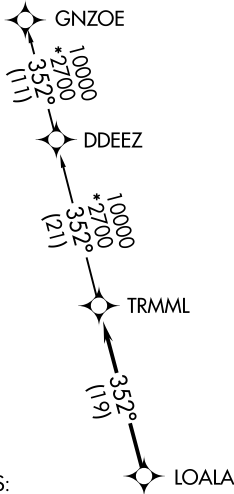
COLEMAN A YOUNG MUNI (DET)

DETROIT, MICHIGAN

**TOP ALTITUDE:  
ASSIGNED BY ATC**

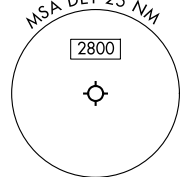
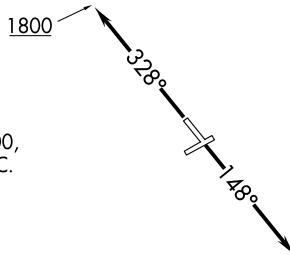
RNAV 1 - DME/DME/IRU or GPS.  
RADAR required.

DETROIT DEP CON  
134.3 284.0  
ATIS  
124.875  
GND CON  
121.85  
DETROIT CITY TOWER  
121.3 257.8



TAKEOFF MINIMUMS:  
Rwys 15, 33: Standard.

NOTE: Turbojet departures at/above 10000,  
maintain 280K until advised by ATC.



NOTE: Chart not to scale.

## DEPARTURE ROUTE DESCRIPTION

TAKEOFF RUNWAY 15: Climb on heading 148° or as assigned by ATC,  
thence....

TAKEOFF RUNWAY 33: Climb on heading 328° to 1800 then as assigned by ATC,  
thence....

...for RADAR vectors to LOALA, then on track 352° to TRMML, then on (transition).  
Maintain ATC assigned altitude, expect filed altitude 10 minutes after departure.

GNZOE TRANSITION (TRMML4.GNZOE):

# TRMML FOUR DEPARTURE (RNAV)

(TRMML4.TRMML) 16MAY24

DETROIT, MICHIGAN  
COLEMAN A YOUNG MUNI (DET)

EC-1, 16 APR 2026 to 14 MAY 2026

EC-1, 16 APR 2026 to 14 MAY 2026