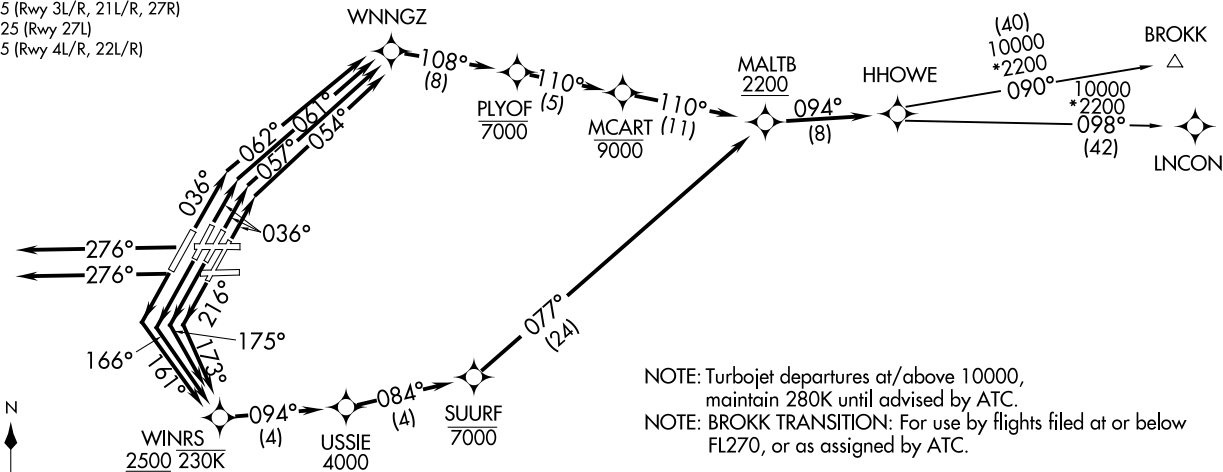


(HHOWE4.HHOWE) 16MAY24
 HOWE FOUR DEPARTURE (RNAV)
 (HHOWE4.HHOWE) 16MAY24
 DETROIT, MICHIGAN
 DETROIT METRO WAYNE COUNTY (DTW)

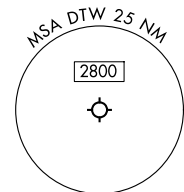
DETROIT DEP CON
 125.525 284.0 (Rwy 27L/R)
 132.025 284.0 (Rwy 3L/R, 4L/R, 21L/R, 22L/R)
 D-ATIS 118.125
 CLNC DEL 120.65
 CPDLC
 GND CON
 121.8 (NW) 119.45 (NE)
 132.725 (SW) 119.25 (SE)
 METRO TOWER
 118.4 317.725 (Rwy 3L/R, 21L/R, 27R)
 128.75 317.725 (Rwy 27L)
 135.0 317.725 (Rwy 4L/R, 22L/R)

RNAV-1 DME/DME/IRU or GPS.
 RADAR required.

TOP ALTITUDE:
17000



TAKEOFF MINIMUMS:
 Rwy 27L/R: Standard
 Rwy 3L/R, 4L/R, 21L/R, 22L/R: Standard with minimum climb of 500'/NM to 1146.



NOTE: Chart not to scale.

(CONTINUED ON FOLLOWING PAGE)

(HHOWE4.HHOWE) 24137
 HOWE FOUR DEPARTURE (RNAV)
 (HHOWE4.HHOWE) 24137
 DETROIT METRO WAYNE COUNTY (DTW)
 (HHOWE4.HHOWE) 24137
 DETROIT, MICHIGAN

DEPARTURE ROUTE DESCRIPTION

SEE ADDITIONAL REQUIREMENTS ON AAUP.

TAKEOFF RUNWAY 3L: Climb on heading 036° to intercept course 057° to WNNGZ, then on track 108° to cross PLYOF at or below 7000, then on track 110° to cross MCART at or below 9000, then on track 110° to cross MALTB at or above 2200, thence....

TAKEOFF RUNWAY 3R: Climb on heading 036° to intercept course 054° to WNNGZ, then on track 108° to cross PLYOF at or below 7000, then on track 110° to cross MCART at or below 9000, then on track 110° to cross MALTB at or above 2200, thence....

TAKEOFF RUNWAY 4L: Climb on heading 036° to intercept course 062° to WNNGZ, then on track 108° to cross PLYOF at or below 7000, then on track 110° to cross MCART at or below 9000, then on track 110° to cross MALTB at or above 2200, thence....

TAKEOFF RUNWAY 4R: Climb on heading 036° to intercept course 061° to WNNGZ, then on track 108° to cross PLYOF at or below 7000, then on track 110° to cross MCART at or below 9000, then on track 110° to cross MALTB at or above 2200, thence....

TAKEOFF RUNWAY 21L: Climb on heading 216° to intercept course 173° to cross WINRS at or above 2500 and at or below 230K, then on track 094° to cross USSIE at or above 4000, then on track 084° to cross SUURF at or below 7000, then on track 077° to cross MALTB at or above 2200, thence....

TAKEOFF RUNWAY 21R: Climb on heading 216° to intercept course 175° to cross WINRS at or above 2500 and at or below 230K, then on track 094° to cross USSIE at or above 4000, then on track 084° to cross SUURF at or below 7000, then on track 077° to cross MALTB at or above 2200, thence....

TAKEOFF RUNWAY 22L: Climb on heading 216° to intercept course 166° to cross WINRS at or above 2500 and at or below 230K, then on track 094° to cross USSIE at or above 4000, then on track 084° to cross SUURF at or below 7000, then on track 077° to cross MALTB at or above 2200, thence....

TAKEOFF RUNWAY 22R: Climb on heading 216° to intercept course 161° to cross WINRS at or above 2500 and at or below 230K, then on track 094° to cross USSIE at or above 4000, then on track 084° to cross SUURF at or below 7000, then on track 077° to cross MALTB at or above 2200, thence....

TAKEOFF RUNWAYS 27L/R: Climb on heading 276° or as assigned by ATC, for RADAR vectors to cross MALTB at or above 2200, thence....

....on track 094° to HHOWE, then on (transition). Maintain 17000, expect filed altitude 10 minutes after departure.

BROKK TRANSITION (HHOWE4.BROKK):

LNCON TRANSITION (HHOWE4.LNCON):

EC-1, 16 APR 2026 to 14 MAY 2026

EC-1, 16 APR 2026 to 14 MAY 2026