

LOC/DME I-EJR <b>111.5</b> Chan <b>52</b>	APP CRS <b>216°</b>	Rwy Ldg TDZE <b>632</b> Apt Elev <b>645</b>
---	------------------------	---

# ILS RWY 21L (SA CAT I & II)

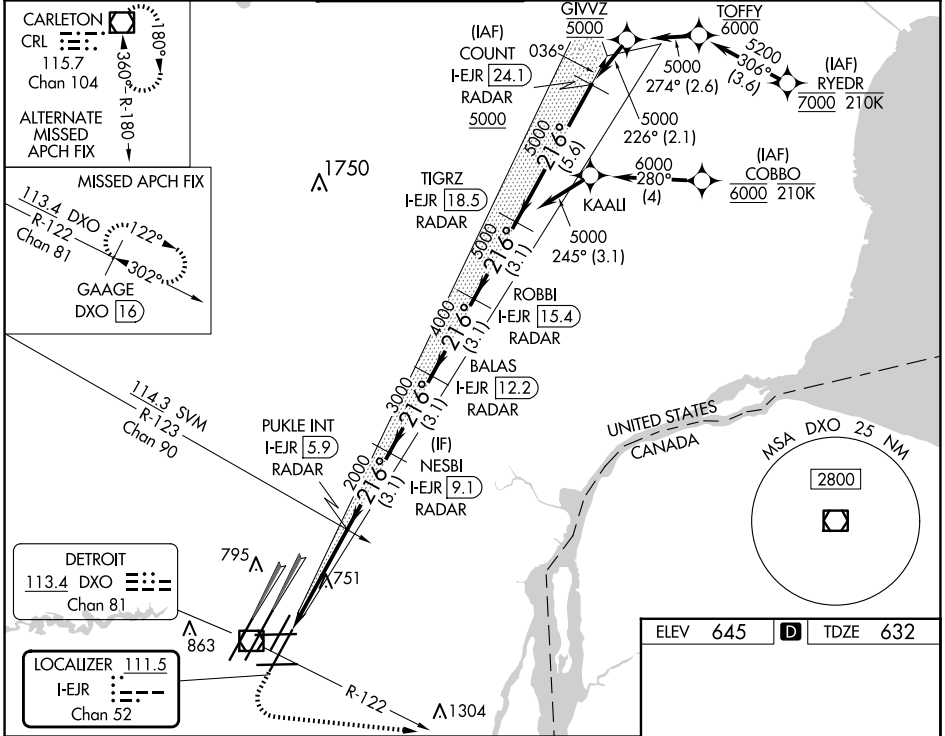
DETROIT METRO WAYNE COUNTY (DTW)

From RYEDR, COBBO: RNAV 1-DME/DME/IRU or GPS required. Aircraft not DME/DME/IRU or GPS equipped - RADAR required for procedure entry. DME or RADAR required.

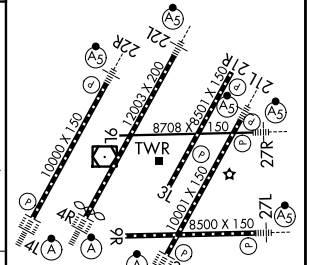
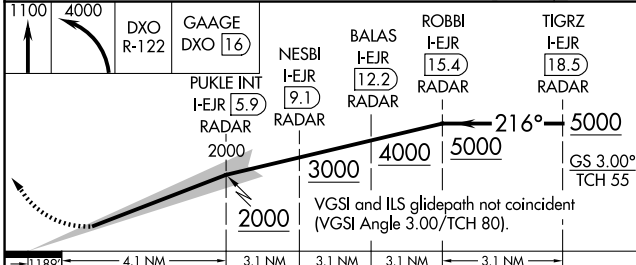
**MALSRS** MISSED APPROACH: Climb to 1100 then climbing left turn to 4000 on DXO R-122 to GAAGE/DXO 16 DME and hold, continue climb-in-hold to 4000.

**Simultaneous approach authorized.** SA CAT I: Requires specific OPSPEC, MSPEC, or LOA approval and use of HUD to DH. SA CAT II: Reduced lighting; requires specific OPSPEC, MSPEC, or LOA approval and use of autoland or HUD to touchdown.

D-ATIS <b>133.675</b>	DETROIT APP CON <b>125.15 284.0</b>	METRO TOWER <b>118.4 317.725</b>	GND CON <b>121.8</b> (NW) <b>119.45</b> (NE) <b>132.725</b> (SW) <b>119.25</b> (SE)	CLNC DEL <b>120.65</b>	CPDLC
--------------------------	--	-------------------------------------	---	---------------------------	-------



ELEV 645	<b>D</b>	TDZE 632
----------	----------	----------



CATEGORY	A	B	C	D
S-ILS 21L	SA CAT I	RA 148/14	150 DA 782	
S-ILS 21L	SA CAT II	RA 98/12	100 DA 732	

HIRL all runways  
REL Rwy 3L, 9L, 9R, 21R  
TDZ/CL Rwy 3R, 4L, 4R and 22R

## SA CATEGORY I & II ILS - SPECIAL AIRCREW & AIRCRAFT CERTIFICATION REQUIRED

EC-1, 16 APR 2026 to 14 MAY 2026

EC-1, 16 APR 2026 to 14 MAY 2026