

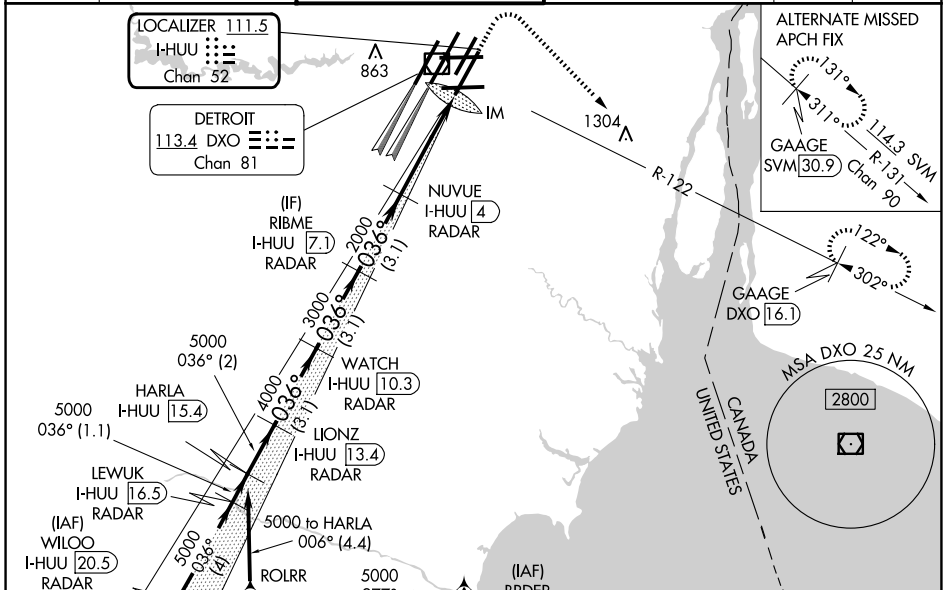
LOC/DME I-HUU <b>111.5</b> Chan <b>52</b>	APP CRS <b>036°</b>	Rwy Ldg <b>10001</b> TDZE <b>633</b> Apt Elev <b>645</b>
-------------------------------------------------	------------------------	----------------------------------------------------------------

# ILS RWY 3R (CAT II & III)

DETROIT METRO WAYNE COUNTY (DTW)

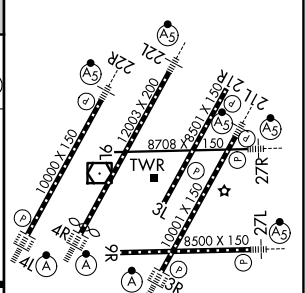
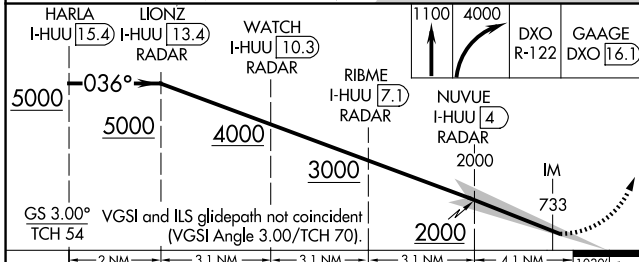
RNAV 1-GPS. MERC A and BRDR: RNAV 1-DME/DME/IRU or GPS required. Aircraft not DME/DME/IRU or GPS equipped - RADAR required for procedure entry.	ALSF-2 	MISSED APPROACH: Climb to 1100 then climbing right turn to 4000 on DXO VOR/DME R-122 to GAAGE/DXO 16.1 DME and hold.
<p>Simultaneous approach authorized. DME required. RVR 1000 authorized with specific OPSPEC, MSPEC, or LOA approval and use of autoland or HUD to touchdown.</p>		

D-ATIS <b>133.675</b>	DETROIT APP CON <b>125.15 284.0</b>	METRO TOWER <b>118.4 317.725</b>	GND CON <b>121.8 (NW) 119.45 (NE)</b> <b>132.725 (SW) 119.25 (SE)</b>	CLNC DEL <b>120.65</b>	CPDLC
--------------------------	----------------------------------------	-------------------------------------	-----------------------------------------------------------------------------	---------------------------	-------



ELEV 645	<b>D</b> TDZE 633
----------	-------------------

HIRL all runways  
REIL Rwy 3L, 9L, 9R and 21R  
TDZ/CL Rwy 3R, 4L, 4R and 22R



CATEGORY	A	B	C	D
S-ILS 3R	CAT II RA 101/12 100 DA 733			
S-ILS 3R	CAT III RVR 06			

## CATEGORY II & III ILS - SPECIAL AIRCREW & AIRCRAFT CERTIFICATION REQUIRED

EC-1, 16 APR 2026 to 14 MAY 2026

EC-1, 16 APR 2026 to 14 MAY 2026