

# ILS PRM RWY 22L (CLOSE PARALLEL)

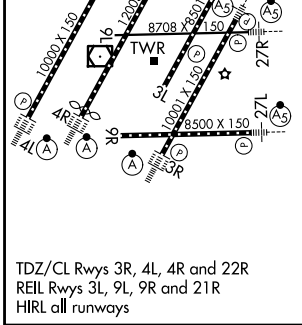
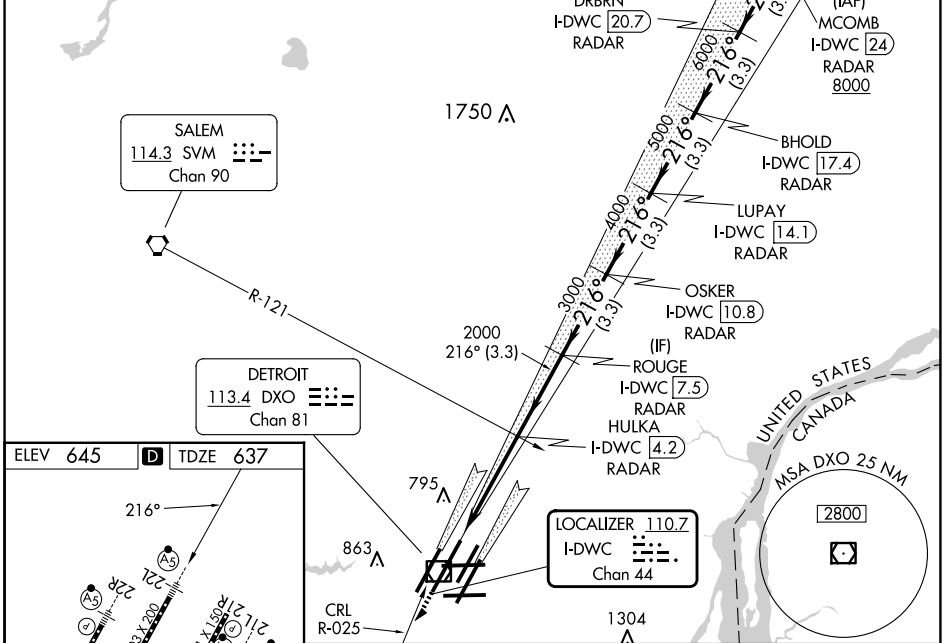
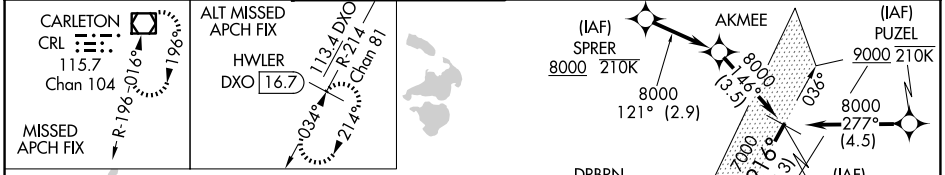
DETROIT METRO WAYNE COUNTY (DTW)

LOC/DME I-DWC <b>110.7</b> Chan <b>44</b>	APP CRS <b>216°</b>	Rwy Ldg TDZE Apt Elev	<b>12003</b> <b>637</b> <b>645</b>
---	------------------------	-----------------------------	--

RNAV 1-GPS.  
RNAV 1-DME/DME/IRU or RADAR required for procedure entry. DME or RADAR required.  
Simultaneous approach authorized. Use of FD or AP required during simultaneous operations. Dual VHF comm required. See additional requirements on AAUP.  
Procedure NA when glide slope not available.  
\*RVR 1800 authorized with use of FD or AP or HUD to DA.

MALSRS  
MISSED APPROACH:  
Climb to 4000 on heading 216° and CRL VOR/DME R-025 to CRL VOR/DME and hold, continue climb-in-hold to 4000.

D-ATIS <b>133.675</b>	DETROIT APP CON <b>124.05 284.0</b>	METRO TOWER <b>128.125 317.725</b> <b>PRM 135.775</b>	GND CON <b>121.8</b> (NW) <b>132.725</b> (SW)	<b>119.45</b> (NE) <b>119.25</b> (SE)	CLNC DEL <b>120.65</b>	CPDLC
--------------------------	--	---	---	--	---------------------------	-------



4000	CRL R-025	CRL	ROUGE I-DWC 7.5 RADAR	LUPAY I-DWC 14.1 RADAR	BHOLD I-DWC 17.4 RADAR	DRBRN I-DWC 20.7 RADAR	MCOMB I-DWC 24 RADAR
3000		HULKA I-DWC 4.2 RADAR					
2000							
1304							
8000							
I-DWC DME ANTENNA		2000		3000		4000	
4.3 NM		3.3 NM		3.3 NM		3.3 NM	
CATEGORY	A	B	C	D			
S-ILS 22L*	837/24		200 (200-1/2)				

EC-1, 16 APR 2026 to 14 MAY 2026

EC-1, 16 APR 2026 to 14 MAY 2026