

DETROIT, MICHIGAN

AL-119 (FAA)

ILS PRM RWY 4R (CLOSE PARALLEL)

25163

LOC/DME I-DTW 110.7	APP CRS 036°	Rwy Ldg 11494
Chan 44		TDZE 640
		Apt Elev 645

DETROIT METRO WAYNE COUNTY (DTW)

RNAV 1-GPS.

DME or RADAR required. CLEVR, CAATZ and ELDNN: RNAV 1-DME/DME/IRU or GPS required. Aircraft not DME/DME/IRU or GPS equipped- RADAR required for procedure entry.

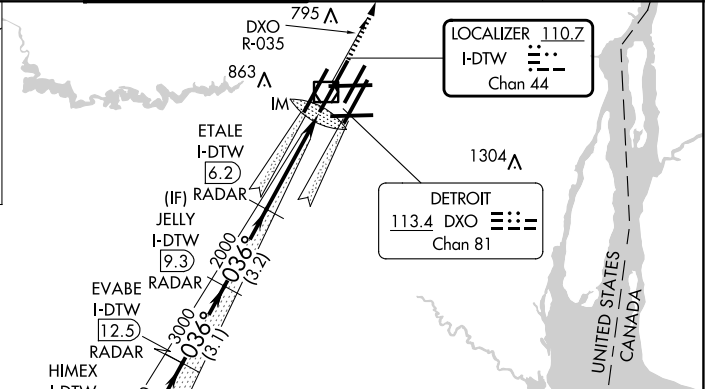
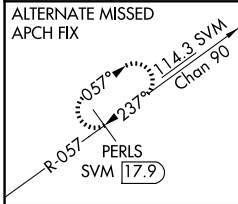
ALSF-2



MISSED APPROACH:
Climb to 4000 on DXO
VOR/DME R-035 to
LUPAY/DXO VOR/DME
15.6 DME and hold.

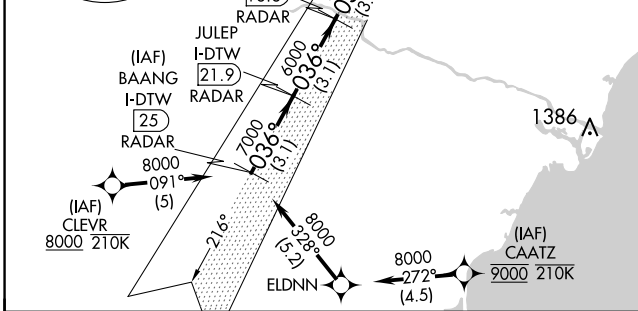
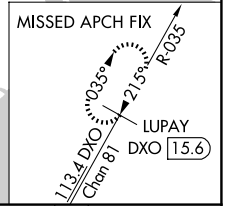
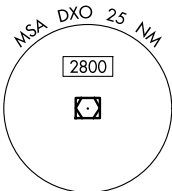
Simultaneous approach authorized. Use of FD or AP required during simultaneous operations. Dual VHF Comm required. See additional requirements on AAUP. Procedure NA when glideslope not available.

D-ATIS 133.675	DETROIT APP CON 124.05 284.0	METRO TOWER 128.125 317.725 PRM 135.775	GND CON 121.8 (NW) 119.45 (NE) 132.725 (SW) 119.25 (SE)	CLNC DEL 120.65	CPDLC
--------------------------	--	---	---	---------------------------	-------

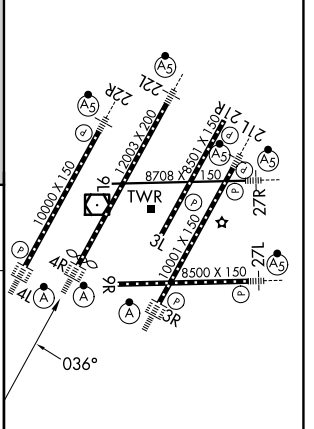
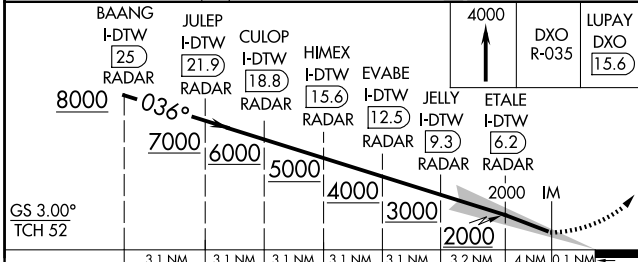


LOCALIZER **110.7**
I-DTW
Chan 44

DETROIT
113.4 DXO
Chan 81



ELEV 645	D TDZE 640
----------	-------------------



GS 3.00° TCH 52	3.1 NM	3.1 NM	3.1 NM	3.1 NM	3.2 NM	4 NM	0.1 NM
CATEGORY	A		B		C	D	
S-ILS 4R	840/18		200 (200-1/2)				

TDZ/CL Rwy 3R, 4L, 4R and 22R
REIL Rwy 3L, 9L, 9R and 21R
HIRL all runways

DETROIT, MICHIGAN
Amdt 3A 13SEP18

42°13'N-83°21'W

DETROIT METRO WAYNE COUNTY (DTW)
ILS PRM RWY 4R (CLOSE PARALLEL)

EC-1, 16 APR 2026 to 14 MAY 2026

EC-1, 16 APR 2026 to 14 MAY 2026