

DETROIT, MICHIGAN

AL-119 (FAA)

# ILS PRM RWY 4R (SA CAT I) (CLOSE PARALLEL)

25163

LOC/DME I-DTW <b>110.7</b> Chan <b>44</b>	APP CRS <b>036°</b>	Rwy Ldg <b>11494</b>	TDZE <b>640</b>	Apt Elev <b>645</b>
---	------------------------	-------------------------	--------------------	------------------------

DETROIT METRO WAYNE COUNTY (DTW)

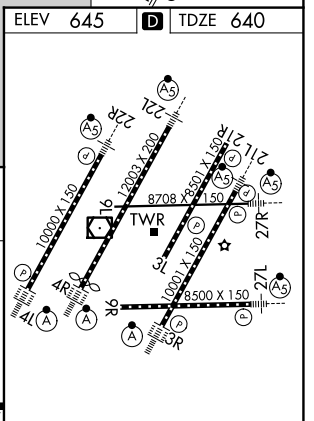
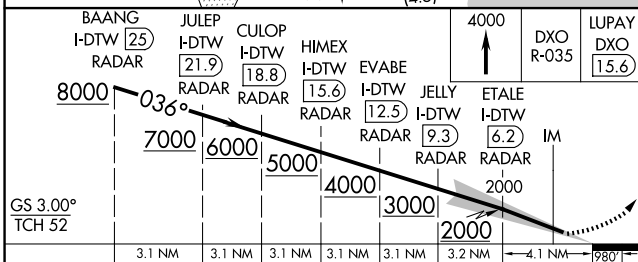
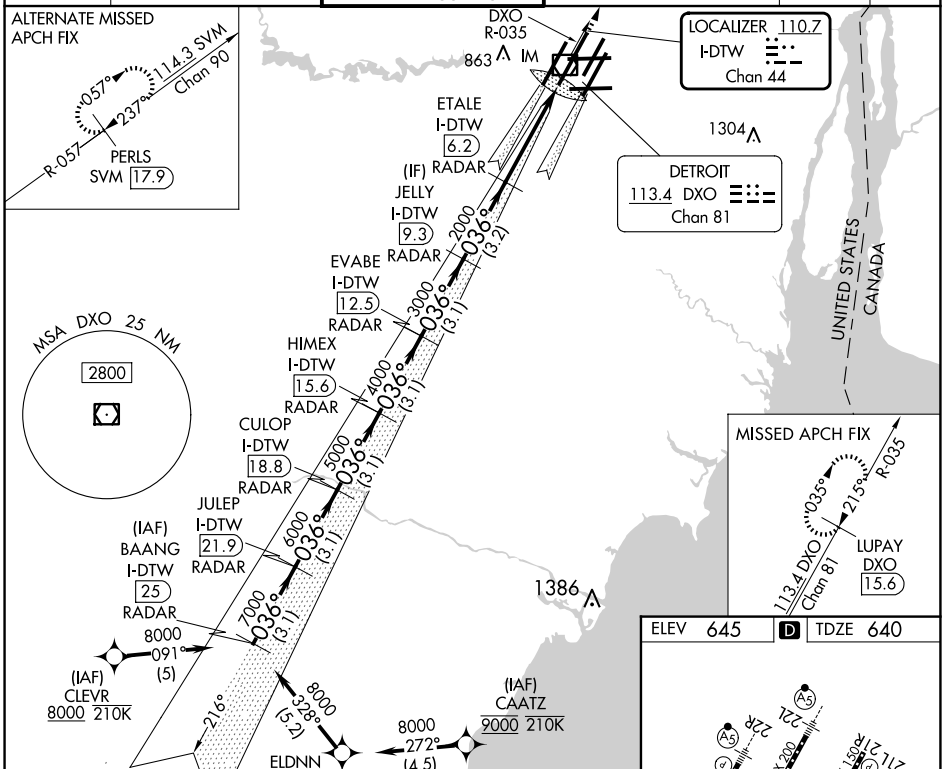
RNAV 1-GPS. DME or RADAR required. CLEVR, CAATZ and ELDNN: RNAV 1-DME/DME/IRU or GPS required. Aircraft not DME/DME/IRU or GPS equipped- RADAR required for procedure entry.

ALSIF-2

MISSED APPROACH: Climb to 4000 on DXO VOR/DME R-035 to LUPAY/DXO VOR/DME 15.6 DME and hold.

Simultaneous approach authorized. Use of FD or AP required during simultaneous operations. Dual VHF Comm required. See additional requirements on AAUP. Procedure NA when glideslope not available. Requires specific OPSPEC, MSPEC, or LOA approval and use of HUD to DH.

D-ATIS <b>133.675</b>	DETROIT APP CON <b>124.05 284.0</b>	METRO TOWER <b>128.125 317.725</b> <b>PRM 135.775</b>	GND CON <b>121.8 (NW) 119.45 (NE)</b> <b>132.725 (SW) 119.25 (SE)</b>	CLNC DEL <b>120.65</b>	CPDLC
--------------------------	--	---	---	---------------------------	-------



CATEGORY	A	B	C	D
S-ILS 4R	RA 154/14		150 DA 790	

## SA CATEGORY I ILS - SPECIAL AIRCREW & AIRCRAFT CERTIFICATION REQUIRED

TDZ/CL Rwy's 3R, 4L, 4R and 22R  
REIL Rwy's 3L, 9L, 9R and 21R  
HIRL all runways

DETROIT, MICHIGAN  
Amdt 3A 13SEP18

42°13'N-83°21'W

DETROIT METRO WAYNE COUNTY (DTW)

# ILS PRM RWY 4R (SA CAT I) (CLOSE PARALLEL)

EC-1, 16 APR 2026 to 14 MAY 2026

EC-1, 16 APR 2026 to 14 MAY 2026