

DETROIT, MICHIGAN

AL-119 (FAA)

ILS PRM Z RWY 4L (CLOSE PARALLEL)

DETROIT METRO WAYNE COUNTY (DTW)

LOC/DME I-HJT 111.95 Chan 56 (Y)	APP CRS 036°	Rwy Ldg TDZE Apt Elev	10000 645 645
--	------------------------	-----------------------------	--

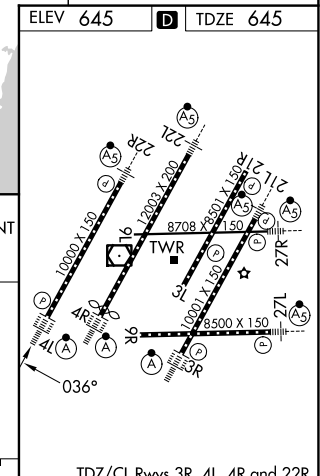
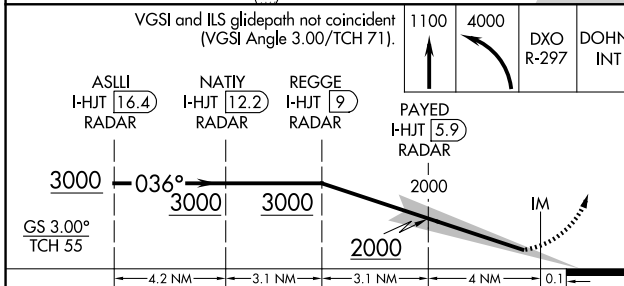
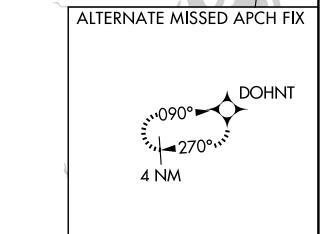
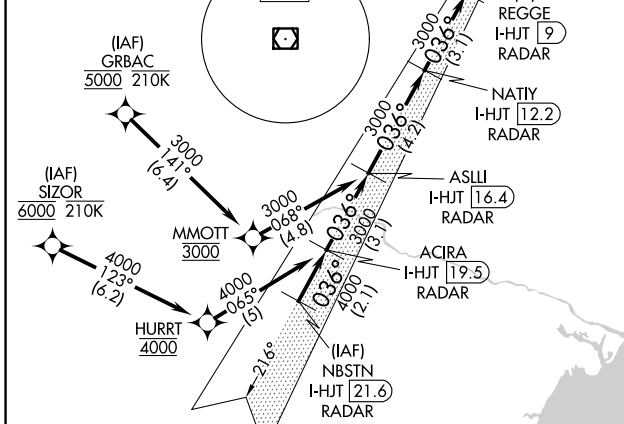
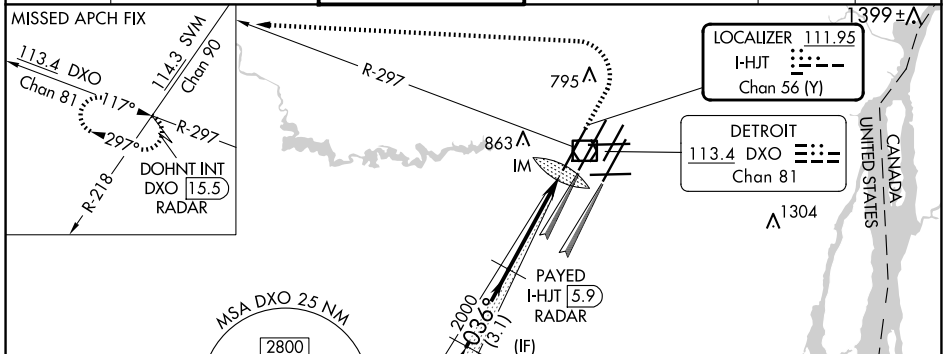
From GRBAC, SIZOR: RNAV 1-DME/DME/IRU or GPS required. Aircraft not DME/DME/IRU or GPS equipped - RADAR required for procedure entry. DME or RADAR required.

Simultaneous approach authorized. Use of FD or AP required during simultaneous operations. Dual VHF Comm required. See additional requirements on AAUP.

ALSF-2

MISSED APPROACH: Climb to 1100 then climbing left turn to 4000 on DXO VOR/DME R-297 to DOHNT INT/DXO 15.5 DME/RADAR and hold.

D-ATIS 133.675	DETROIT APP CON 124.05 284.0	METRO TOWER 135.0 317.725 PRM 127.05	GND CON 121.8 (NW) 119.45 (NE) 132.725 (SW) 119.25 (SE)	CLNC DEL 120.65	CPDLC
--------------------------	--	--	---	---------------------------	-------



CATEGORY	A	B	C	D
S-ILS 4L	845/18 200 (200-½)			

DETROIT, MICHIGAN
Orig-B 30JAN20

42°13'N-83°21'W

DETROIT METRO WAYNE COUNTY (DTW)
ILS PRM Z RWY 4L (CLOSE PARALLEL)

EC-1, 16 APR 2026 to 14 MAY 2026

EC-1, 16 APR 2026 to 14 MAY 2026