

LOC/DME I-JKI 111.95	APP CRS 216°	Rwy Ldg 10000
Chan 56 (Y)		TDZE 642
		Apt Elev 645

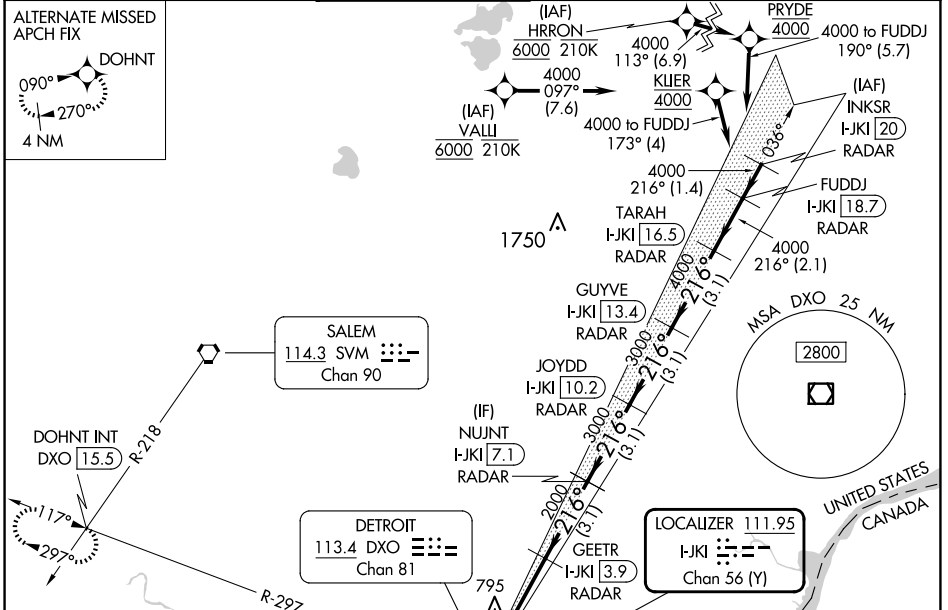
ILS Z RWY 22R (SA CAT I & II)

DETROIT METRO WAYNE COUNTY (DTW)

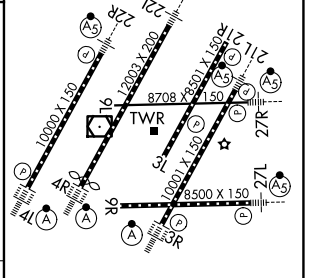
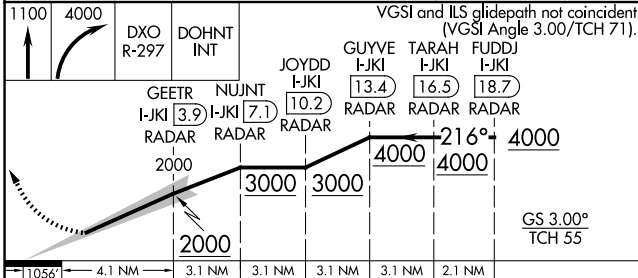
RNAV 1-GPS, HRRON and VALLI: RNAV 1-DME/DME/IRU or GPS required.
 Aircraft not DME/DME/IRU or GPS equipped - RADAR required for procedure entry.

Simultaneous approach authorized. SA CAT I: Requires specific OPSPEC, MSPEC, or LOA approval and use of HUD to DH. SA CAT II: Reduced lighting; Requires specific OPSPEC, MSPEC, or LOA approval and use of autoland or HUD to touchdown.

D-ATIS 133.675	DETROIT APP CON 124.05 284.0	METRO TOWER 135.0 317.725	GND CON 121.8 (NW) 119.45 (NE) 132.725 (SW) 119.25 (SE)	CLNC DEL 120.65	CPDLC
--------------------------	----------------------------------------	-------------------------------------	-----------------------------------------------------------------------------	---------------------------	-------



ELEV	645	TDZE	642
------	-----	------	-----



11056	4.1 NM	3.1 NM	3.1 NM	3.1 NM	2.1 NM
CATEGORY	A	B	C	D	
S-ILS 22R	SA CAT I	RA 148/14	150 DA 792		
S-ILS 22R	SA CAT II	RA 98/12	100 DA 742		

SA CATEGORY I & II ILS - SPECIAL AIRCREW & AIRCRAFT CERTIFICATION REQUIRED

DETROIT, MICHIGAN Amdt 4B 30JAN20

DETROIT METRO WAYNE COUNTY (DTW) 42°13'N-83°21'W

ILS Z RWY 22R (SA CAT I & II)

TDZ/CL Rwy 3R, 4L, 4R and 22R
 REL Rwy 3L, 9L, 9R and 21R
 HIRL all Rwy's

EC-1, 16 APR 2026 to 14 MAY 2026

EC-1, 16 APR 2026 to 14 MAY 2026