

KZLOV TWO DEPARTURE (RNAV)
(KZLOV2.WINN2) 16MAY24

DETROIT DEP CON
132.025 284.0
D-ATIS 118.125
CLNC DEL 120.65
CPDLC
GND CON
121.8 (NW) 119.45 (NE)
132.725 (SW) 119.25 (SE)
METRO TOWER
118.4 317.725 (Rwy 3L/R, 21L/R, 27R)
128.75 317.725 (Rwy 27L)
135.0 317.725 (Rwy 4L/R, 22L/R)

RNAV 1 - DME/DME/IRU or GPS.

**TOP ALTITUDE:
10000**

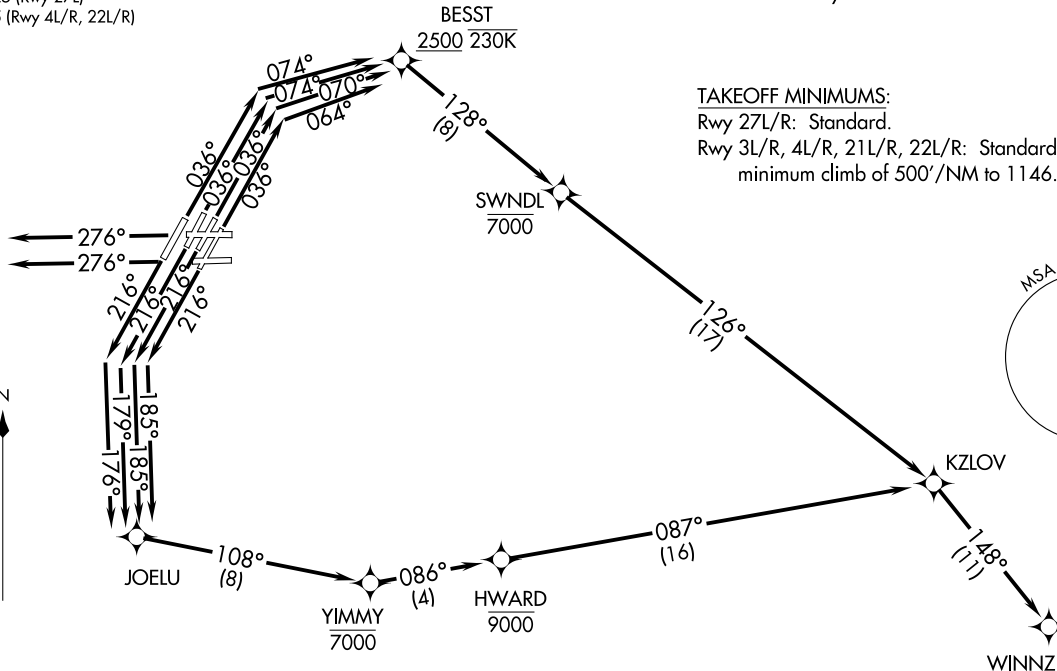
RADAR required.

NOTE: Turbojet departures at/above 10000,
maintain 280K until advised by ATC.
NOTE: For use by Cleveland terminal arrivals only.

TAKEOFF MINIMUMS:

Rwy 27L/R: Standard.

Rwy 3L/R, 4L/R, 21L/R, 22L/R: Standard with
minimum climb of 500'/NM to 1146.



NOTE: Chart not to scale.

(CONTINUED ON FOLLOWING PAGE)

DETROIT, MICHIGAN
DETROIT METRO WAYNE COUNTY (DTW)

(KZLOV2.WINN2) 24137
KZLOV TWO DEPARTURE (RNAV)

DETROIT METRO WAYNE COUNTY (DTW)
DETROIT, MICHIGAN
AL-119 (FAA)

DEPARTURE ROUTE DESCRIPTION



SEE ADDITIONAL REQUIREMENTS ON AAUP

TAKEOFF RUNWAY 3L: Climb on heading 036° to intercept course 070° to cross BESST at or above 2500 and at or below 230K, then on track 128° to cross SWNDL at or below 7000, then on track 126° to KZLOV, thence....

TAKEOFF RUNWAY 3R: Climb on heading 036° to intercept course 064° to cross BESST at or above 2500 and at or below 230K, then on track 128° to cross SWNDL at or below 7000, then on track 126° to KZLOV, thence....

TAKEOFF RUNWAYS 4L/R: Climb on heading 036° to intercept course 074° to cross BESST at or above 2500 and at or below 230K, then on track 128° to cross SWNDL at or below 7000, then on track 126° to KZLOV, thence....

TAKEOFF RUNWAYS 21L/R: Climb on heading 216° to intercept course 185° to JOELU, then on track 108° to cross YIMMY at or below 7000, then on track 086° to cross HWARD at or below 9000, then on track 087° to KZLOV, thence....

TAKEOFF RUNWAY 22L: Climb on heading 216° to intercept course 179° to JOELU, then on track 108° to cross YIMMY at or below 7000, then on track 086° to cross HWARD at or below 9000, then on track 087° to KZLOV, thence....

TAKEOFF RUNWAY 22R: Climb on heading 216° to intercept course 176° to JOELU, then on track 108° to cross YIMMY at or below 7000, then on track 086° to cross HWARD at or below 9000, then on track 087° to KZLOV, thence....

TAKEOFF RUNWAYS 27L/R: Climb on heading 276° or as assigned by ATC, for RADAR vectors to KZLOV, thence....

....on track 148° to WINNZ. Maintain ATC assigned altitude, expect filed altitude ten minutes after departure.

EC-1, 16 APR 2026 to 14 MAY 2026

EC-1, 16 APR 2026 to 14 MAY 2026