

DETROIT, MICHIGAN

AL-119 (FAA)

# RNAV (GPS) PRM Z RWY 22L (CLOSE PARALLEL)

DETROIT METRO WAYNE COUNTY (DTW)

WAAS CH <b>99601</b> <b>W22A</b>	APP CRS <b>216°</b>	Rwy Ldg TDZE <b>637</b> Apt Elev <b>645</b>
--	------------------------	---

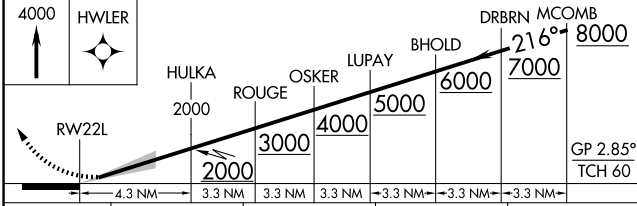
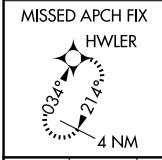
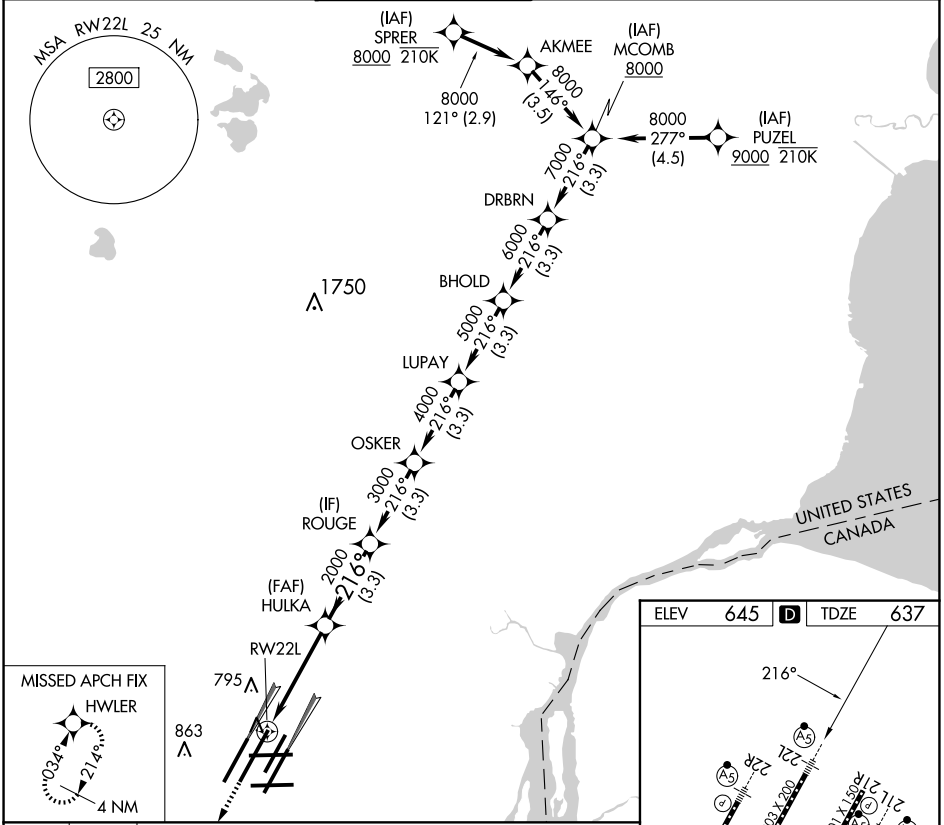
RNP APCH.

▼ For uncompensated Baro-VNAV systems, LNAV/VNAV NA below -10°C or above 54°C. Simultaneous approach authorized. Use of FD or AP required during simultaneous operations. Dual VHF comm required. See additional requirements on AAUP. For inop ALS, increase LNAV/VNAV all Cats visibility to RVR 4500. \* RVR 1800 authorized with use of FD or AP or HUD to DA.

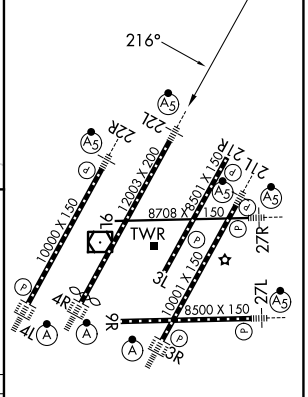


MISSED APPROACH:  
Climb to 4000 direct  
HWLER and hold.

D-ATIS <b>133.675</b>	DETROIT APP CON <b>124.05 284.0</b>	METRO TOWER <b>128.125 317.725</b> <b>PRM 135.775</b>	GND CON <b>121.8</b> (NW) <b>119.45</b> (NE) <b>132.725</b> (SW) <b>119.25</b> (SE)	CLNC DEL <b>120.65</b>	CPDLC
--------------------------	--	---	---	---------------------------	-------



ELEV 645	<b>D</b>	TDZE 637
----------	----------	----------



CATEGORY	A	B	C	D
LPV DA *		837/24	200 (200-1/2)	
LNAV/VNAV DA		938/24	301 (300-1/2)	

TDZ/CL Rwsy 3R, 4L, 4R, and 22R  
REIL Rwsy 3L, 9L, 9R, and 21R  
HIRL all runways

DETROIT, MICHIGAN  
Amdt 1A 28FEB19

42°13'N-83°21'W  
**RNAV (GPS) PRM Z RWY 22L (CLOSE PARALLEL)**

DETROIT METRO WAYNE COUNTY (DTW)

EC-1, 16 APR 2026 to 14 MAY 2026

EC-1, 16 APR 2026 to 14 MAY 2026