

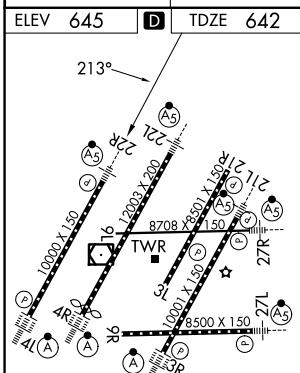
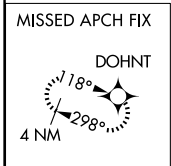
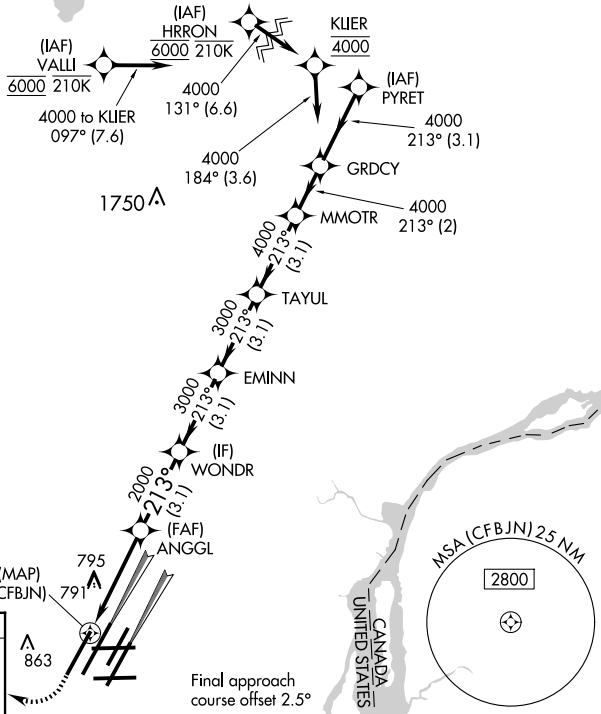
WAAS CH <b>42939</b> <b>W22B</b>	APP CRS <b>213°</b>	Rwy Ldg TDZE Apt Elev	<b>10000</b> <b>642</b> <b>645</b>
--	------------------------	-----------------------------	--

# RNAV (GPS) Y RWY 22R

DETROIT METRO WAYNE COUNTY (DTW)

<p>▼ For uncompensated Baro-VNAV systems, LNAV/VNAV NA below -19°C (-2°F) or above 54°C (130°F). DME/DME RNP-0.3 NA. Simultaneous approach authorized. LNAV procedure NA during simultaneous operations. Use of FD or AP providing RNAV track guidance required during simultaneous operations.</p>		<p>MALS R</p>	<p>MISSED APPROACH: Climb to 1100 then climbing right turn to 4000 direct DOHNT and hold.</p>		
D-ATIS <b>133.675</b>	DETROIT APP CON <b>124.05 284.0</b>	METRO TOWER <b>135.0 317.725</b>	GND CON <b>121.8</b> (NW) <b>119.45</b> (NE) <b>132.725</b> (SW) <b>119.25</b> (SE)	CLNC DEL <b>120.65</b>	CPDLC

## RADAR REQUIRED



1100	4000	DOHNT	VGSI and RNAV glidepath not coincident (VGSI Angle 3.00/TCH 71).	
TAYUL MMOTR GRDCY				
*LNAV only.				
ANGGL WONDR EMINN				
*1.1 NM to (CFBJN)				
2000				
GP 3.00° TCH 55				
1.1 NM 3.0 NM 3.1 NM 3.1 NM 3.1 NM 2 NM				
CATEGORY	A	B	C	D
LPV DA	892/24		250 (300-½)	
LNAV/VNAV DA	1050/45		408 (500-¾)	
LNAV MDA	1060/24	418 (500-½)	1060/40	418 (500-¾)
<b>C</b> CIRCLING	1180-1	535 (600-1)	1180-1½	1240-2
			535 (600-½)	595 (600-2)

TDZ/CL Rwy 3R, 4L, 4R and 22R  
HIRL all runways  
REIL Rwy 3L, 9L, 9R and 21R

EC-1, 16 APR 2026 to 14 MAY 2026

EC-1, 16 APR 2026 to 14 MAY 2026