

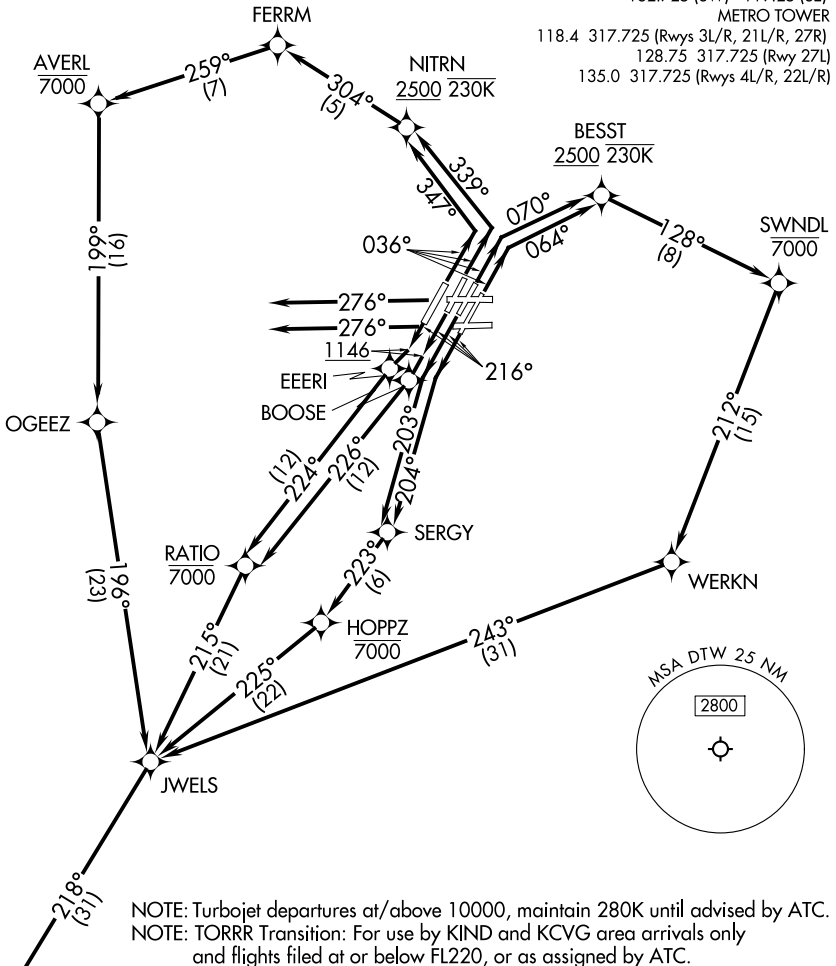
SNDRS THREE DEPARTURE (RNAV) Departure Routes

TOP ALTITUDE:
17000

RNAV-1 DME/DME/IRU or GPS.

RADAR required.

DETROIT DEP CON
 125.525 284.0 (Rwys 4L/R, 22L/R)
 132.025 284.0 (Rwys 3L/R, 21L/R, 27L/R)
 D-ATIS 118.125
 CLNC DEL 120.65
 CPDLC
 GND CON
 121.8 (NW) 119.45 (NE)
 132.725 (SW) 119.25 (SE)
 METRO TOWER
 118.4 317.725 (Rwys 3L/R, 21L/R, 27R)
 128.75 317.725 (Rwy 27L)
 135.0 317.725 (Rwys 4L/R, 22L/R)



EC-1, 16 APR 2026 to 14 MAY 2026

EC-1, 16 APR 2026 to 14 MAY 2026

SNDRS
 See following page for Transition Routes

TAKEOFF MINIMUMS:

Rwys 27L/R: Standard
 Rwys 3L/R, 4L/R, 21L/R, 22L/R: Standard with minimum climb of 500' per NM to 1146.

(CONTINUED ON FOLLOWING PAGE)

NOTE: Chart not to scale.

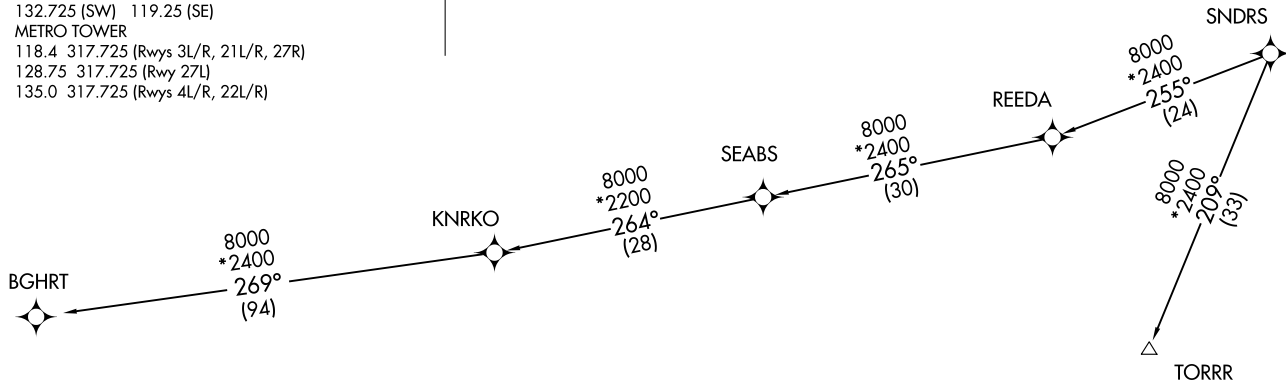
(SNDRS3.SNDRS) 16MAY24
SNDRS THREE DEPARTURE (RNAV) Transition Routes
 DETROIT, MICHIGAN
 DETROIT METRO WAYNE COUNTY (DTW)

DETROIT DEP CON
 125.525 284.0 (Rwys 4L/R, 22L/R)
 132.025 284.0 (Rwys 3L/R, 21L/R, 27L/R)
 D-ATIS 118.125
 CLNC DEL 120.65
 CPDLC
 GND CON
 121.8 (NW) 119.45 (NE)
 132.725 (SW) 119.25 (SE)
 METRO TOWER
 118.4 317.725 (Rwys 3L/R, 21L/R, 27R)
 128.75 317.725 (Rwy 27L)
 135.0 317.725 (Rwys 4L/R, 22L/R)



RNAV-1 DME/DME/IRU or GPS.
 RADAR required.

TOP ALTITUDE:
17000

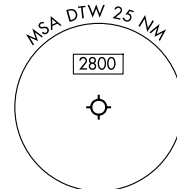


NOTE: Turbojet departures at/above 10000, maintain 280K until advised by ATC.
 NOTE: TORRR Transition: For use by KIND and KCVG area arrivals only and flights filed at or below FL220, or as assigned by ATC.

TAKEOFF MINIMUMS:

Rwys 27L/R: Standard
 Rwys 3L/R, 4L/R, 21L/R, 22L/R: Standard with minimum climb of 500' per NM to 1146.

NOTE: Chart not to scale.



(CONTINUED ON FOLLOWING PAGE)

(SNDRS3.SNDRS) 24137
 AL-119 (FAA)
DETROIT METRO WAYNE COUNTY (DTW) Transition Routes
 DETROIT, MICHIGAN



DEPARTURE ROUTE DESCRIPTION

SEE ADDITIONAL REQUIREMENTS IN RNAV DEPARTURE AAUP.

TAKEOFF RUNWAY 3L: Climb on heading 036° to intercept course 070° to cross BESST at or above 2500 and at or below 230K, then on track 128° to cross SWNDL at or below 7000, then on track 212° to WERKN, then on track 243° to JWELS, thence...

TAKEOFF RUNWAY 3R: Climb on heading 036° to intercept course 064° to cross BESST at or above 2500 and at or below 230K, then on track 128° to cross SWNDL at or below 7000, then on track 212° to WERKN, then on track 243° to JWELS, thence...

TAKEOFF RUNWAY 4L: Climb on heading 036° to intercept course 347° to cross NITRN at or above 2500 and at or below 230K, then on track 304° to FERRM, then on track 259° to cross AVERL at or below 7000, then or track 199° to OGEEZ, then on track 196° to JWELS, thence...

TAKEOFF RUNWAY 4R: Climb on heading 036° to intercept course 339° to cross NITRN at or above 2500 and at or below 230K, then on track 304° to FERRM, then on track 259° to cross AVERL at or below 7000, then or track 199° to OGEEZ, then on track 196° to JWELS, thence....

TAKEOFF RUNWAY 21L: Climb on heading 216° to intercept course 204° to SERGY, then on track 223° to cross HOPPZ at or below 7000, then on track 225° to JWELS, thence....

TAKEOFF RUNWAY 21R: Climb on heading 216° to intercept course 203° to SERGY, then on track 223° to cross HOPPZ at or below 7000, then on track 225° to JWELS, thence....

TAKEOFF RUNWAY 22L: Climb on heading 216° to 1146, then direct BOOSE, then on track 226° to cross RATIO at or below 7000, then on track 215° to JWELS, thence....

TAKEOFF RUNWAY 22R: Climb on heading 216° to 1146, then direct EEERI, then on track 224° to cross RATIO at or below 7000, then on track 215° to JWELS, thence....

TAKEOFF RUNWAYS 27L/27R: Climb on heading 276° or as assigned by ATC, for RADAR vectors to JWELS, thence....

...on track 218° to SNDRS, then on (transition). Maintain 17000, expect filed altitude 10 minutes after departure.

BGHRT TRANSITION (SNDRS3.BGHRT):

TORRR TRANSITION (SNDRS3.TORRR):

EC-1, 16 APR 2026 to 14 MAY 2026

EC-1, 16 APR 2026 to 14 MAY 2026