

TRMML FOUR DEPARTURE (RNAV) Departure Routes

**TOP ALTITUDE:
17000**



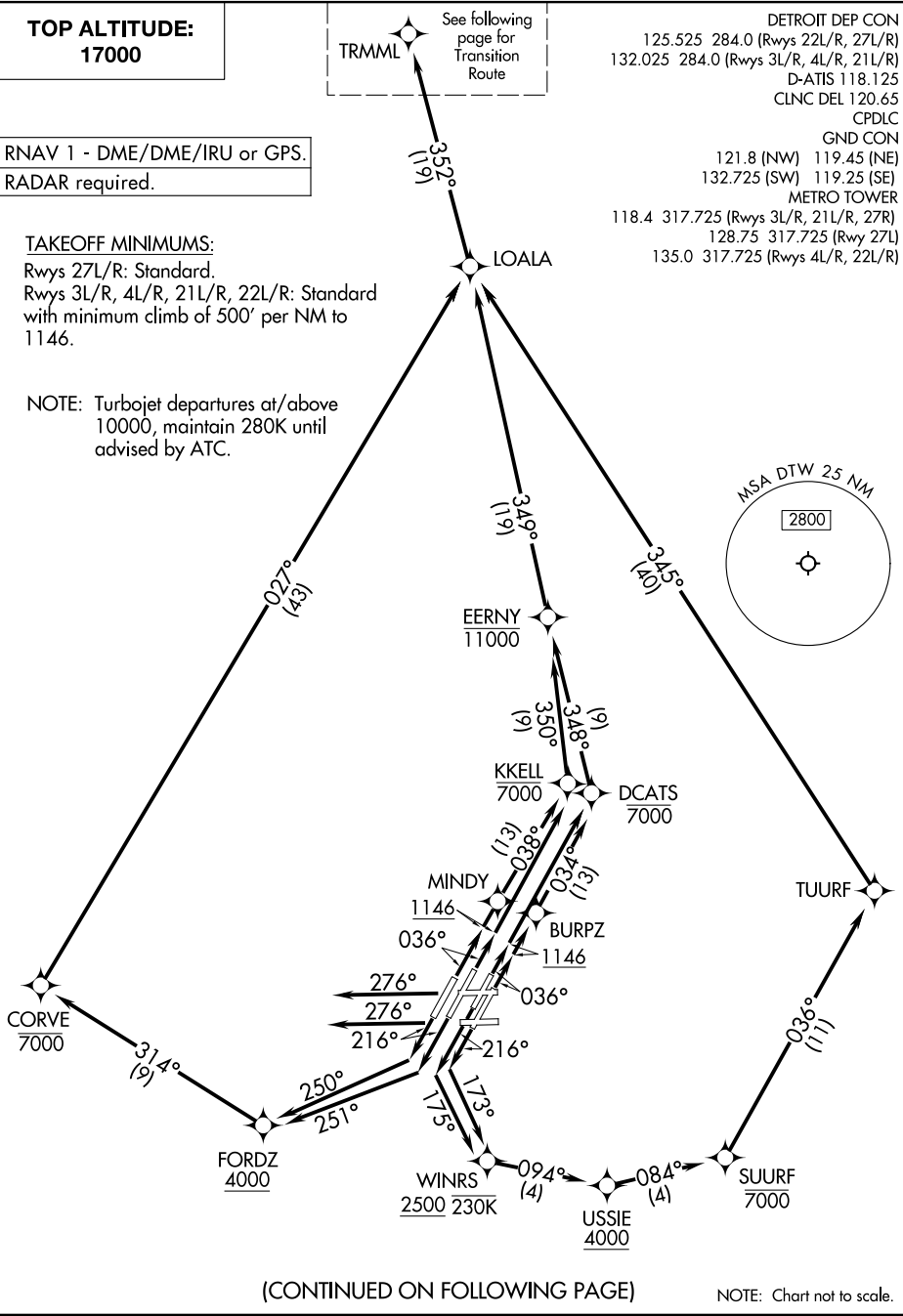
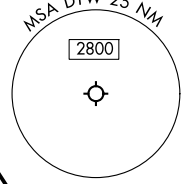
DETROIT DEP CON
 125.525 284.0 (Rwys 22L/R, 27L/R)
 132.025 284.0 (Rwys 3L/R, 4L/R, 21L/R)
 D-ATIS 118.125
 CLNC DEL 120.65
 CPDLC
 GND CON
 121.8 (NW) 119.45 (NE)
 132.725 (SW) 119.25 (SE)
 METRO TOWER
 118.4 317.725 (Rwys 3L/R, 21L/R, 27R)
 128.75 317.725 (Rwy 27L)
 135.0 317.725 (Rwys 4L/R, 22L/R)

RNAV 1 - DME/DME/IRU or GPS.
 RADAR required.

TAKEOFF MINIMUMS:

Rwys 27L/R: Standard.
 Rwys 3L/R, 4L/R, 21L/R, 22L/R: Standard
 with minimum climb of 500' per NM to
 1146.

NOTE: Turbojet departures at/above
 10000, maintain 280K until
 advised by ATC.



(CONTINUED ON FOLLOWING PAGE)

NOTE: Chart not to scale.

EC-1, 16 APR 2026 to 14 MAY 2026

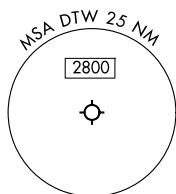
EC-1, 16 APR 2026 to 14 MAY 2026

TRMML FOUR DEPARTURE (RNAV) Transition Route

**TOP ALTITUDE:
17000**

RNAV 1 - DME/DME/IRU or GPS.

RADAR required.



NOTE: Chart not to scale.

GNZOE



DDEEZ



TRMML

DETROIT DEP CON
125.525 284.0 (Rwys 22L/R, 27L/R)
132.025 284.0 (Rwys 3L/R, 4L/R, 21L/R)
D-ATIS 118.125
CLNC DEL 120.65
CPDLC
GND CON
121.8 (NW) 119.45 (NE)
132.725 (SW) 119.25 (SE)
METRO TOWER
118.4 317.725 (Rwys 3L/R, 21L/R, 27R)
128.75 317.725 (Rwy 27L)
135.0 317.725 (Rwys 4L/R, 22L/R)

NOTE: Turbojet departures at/above 10000, maintain 280K until advised by ATC.
NOTE: See additional requirements on AAUP.

DEPARTURE ROUTE DESCRIPTION

SEE ADDITIONAL REQUIREMENTS IN RNAV DEPARTURE AAUP.

TAKEOFF RUNWAY 3L: Climb on heading 036° to 1146, then direct to cross DCATS at or below 7000, then on track 348° to cross EERNY at or below 11000, then on track 349° to LOALA, thence....

TAKEOFF RUNWAY 3R: Climb on heading 036° to 1146, then direct BURPZ, then on track 034° to cross DCATS at or below 7000, then on track 348° to cross EERNY at or below 11000, then on track 349° to LOALA, thence....

TAKEOFF RUNWAY 4L: Climb on heading 036° to 1146, then direct MINDY, then on track 038° to cross KKELL at or below 7000, then on track 350° to cross EERNY at or below 11000, then on track 349° to LOALA, thence....

TAKEOFF RUNWAY 4R: Climb on heading 036° to 1146, then direct to cross KKELL at or below 7000, then on track 350° to cross EERNY at or below 11000, then on track 349° to LOALA, thence....

TAKEOFF RUNWAY 21L: Climb on heading 216° to intercept course 173° to cross WINRS at or above 2500 and at or below 230K, then on track 094° to cross USSIE at or above 4000, then on track 084° to cross SUURF at or below 7000, then on track 036° to TUURF, then on track 345° to LOALA, thence....

TAKEOFF RUNWAY 21R: Climb on heading 216° to intercept course 175° to cross WINRS at or above 2500 and at or below 230K, then on track 094° to cross USSIE at or above 4000, then on track 084° to cross SUURF at or below 7000, then on track 036° to TUURF, then on track 345° to LOALA, thence....

TAKEOFF RUNWAY 22L: Climb on heading 216° to intercept course 251° to cross FORDZ at or above 4000, then on track 314° to cross CORVE at or below 7000, then on track 027° to LOALA, thence....

TAKEOFF RUNWAY 22R: Climb on heading 216° to intercept course 250° to cross FORDZ at or above 4000, then on track 314° to cross CORVE at or below 7000, then on track 027° to LOALA, thence....

TAKEOFF RUNWAY 27L/R: Climb on heading 276° or as assigned by ATC, for RADAR vectors to LOALA, thence....

...on track 352° to TRMML, then on (transition). Maintain 17000, expect filed altitude 10 minutes after departure.

GNZOE TRANSITION (TRMML4.GNZOE)