

LOC/DME I-ODA 110.75 Chan 44 (Y)	APP CRS 138°	Rwy Ldg TDZE Apt Elev	8500 401 401
---	------------------------	-----------------------------	---

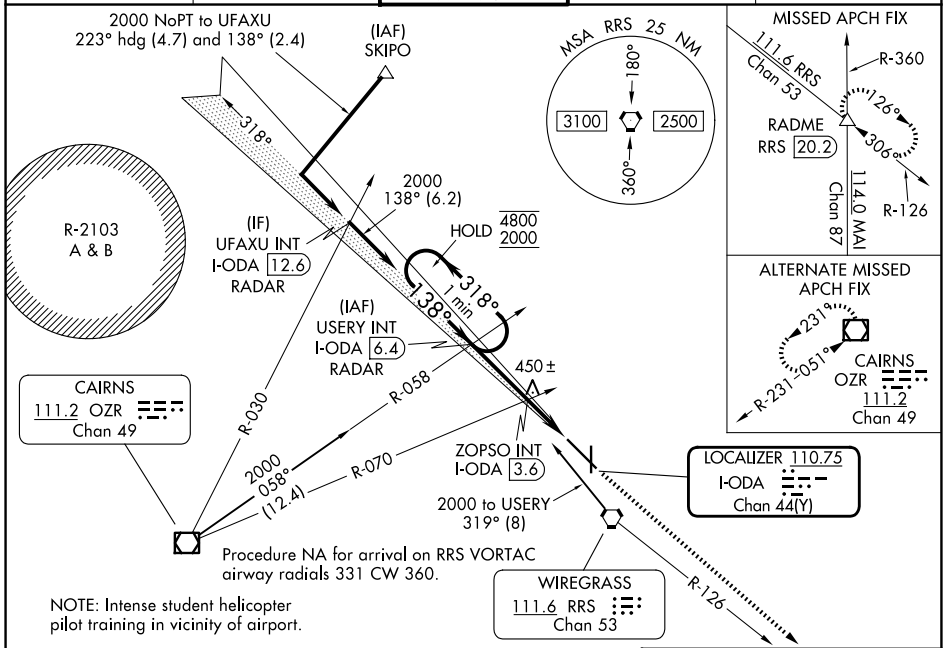
ILS or LOC RWY 14

DOTHAN RGNL (DHN)

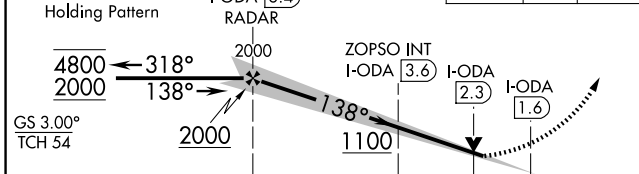
NA Autopilot coupled approach NA below 590.

MISSED APPROACH: Climb to 3000 on heading 138° and on RRS VORTAC R-126 to RADME INT/ RRS 20.2 DME and hold.

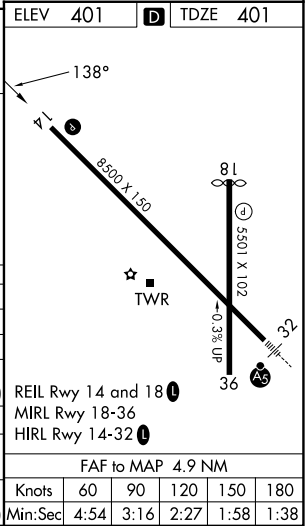
ATIS 135.725	CAIRNS APP CON ★ 125.4 327.125	DOTHAN TOWER ★ 118.4 (CTAF) 0 257.6	GND CON 121.7 348.6	UNICOM 122.95
------------------------	--	---	-------------------------------	-------------------------



Use I-ODA DME when on the localizer course.	3000 ↑ hdg 138°	RADME ELEV 401	RRS R-126 △	TDZE 401
---	-----------------------	-------------------	----------------	----------



CATEGORY	A	B	C	D	E
S-ILS 14		601-¾	200 (200-¾)		
S-LOC 14	1100-1	699 (700-1)		1100-2	699 (700-2)
CIRCLING	1100-1	699 (700-1)	1100-2 699 (700-2)	1100-2½ 699 (700-2½)	1100-2½ 699 (700-2½)
ZOPSO FIX MINIMUMS (DUAL VOR RECEIVERS, DME, OR RADAR REQUIRED)					
S-LOC 14		700-1	299 (300-1)		
CIRCLING	860-1	459 (500-1)	920-1½ 519 (600-1½)	1040-2 639 (700-2)	1040-2½ 639 (700-2½)



SE-4, 16 APR 2026 to 14 MAY 2026

SE-4, 16 APR 2026 to 14 MAY 2026