

HI-TACAN Z RWY 9

TACAN LKI Chan 11	APCH CRS 087°	Rwy ldg 10,062 TDZE 1428 Arpt Elev 1428
----------------------	------------------	---

[USAF]

DULUTH INTL (KDLH)

RADAR required for procedure entry.

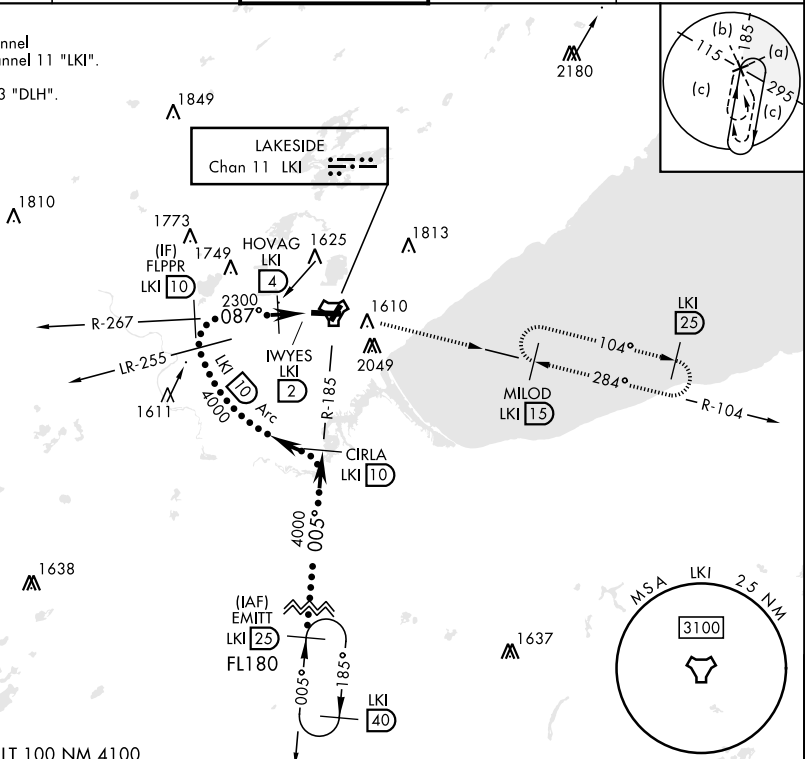
ALSF-2

MISSED APPROACH: Climb to 2500 then climbing right turn to 4000 on LKI TACAN R-104 to MILOD (15 DME) and hold.

*When ALS inop, increase CAT E vis to 1 3/8 miles.
**Circling NA for CAT DE SE of Rwy 3 and 27.

ATIS 124.1 270.1	APP CON 125.45 233.7	TOWER 118.3 257.8	GND CON 121.9 348.6	ASR
---------------------	-------------------------	----------------------	------------------------	-----

CAUTION:
Do not select channel 73 "DLH" for channel 11 "LKI".
Towers 2049" on R-099 channel 73 "DLH".



EMERG SAFE ALT 100 NM 4100

VGS1 and descent angles not coincident (VGS1 Angle 3.00/TCH 70).			2500	4000	MILOD LKI 15	ELEV 1428	TDZE 1428
CATEGORY	C	D	E				
S-9 *	1880/45	452	(500-1)				
CIRCLING **	1940-1 1/2 512 (600-1 1/2)	2020-2 592 (600-2)	2060-2 1/4 632 (700-2 1/4)				

HI-TACAN Z RWY 9

NC-1, 16 APR 2026 to 14 MAY 2026

NC-1, 16 APR 2026 to 14 MAY 2026